



185 Liverpool Street Sydney NSW

This unique commercial property with five car spaces is situated within the commercial section of the prestigious Connaught building. The property occupies the entire third floor and has been extensively and impressively fitted out for a leading law firm. Additional features include floor to ceiling glass windows, excellent natural light and access to resort-style facilities including a rooftop pool (Level 30) with spectacular views of Sydney Harbour and Hyde Park.

The Connaught is an iconic building that boasts a fantastic location and excellent services including a gym, sauna, rooftop pool and entertaining areas with sweeping views over Hyde Park and Sydney Harbour. The building is opposite Hyde Park and is in close proximity to many Sydney landmarks including the Downing Centre Law

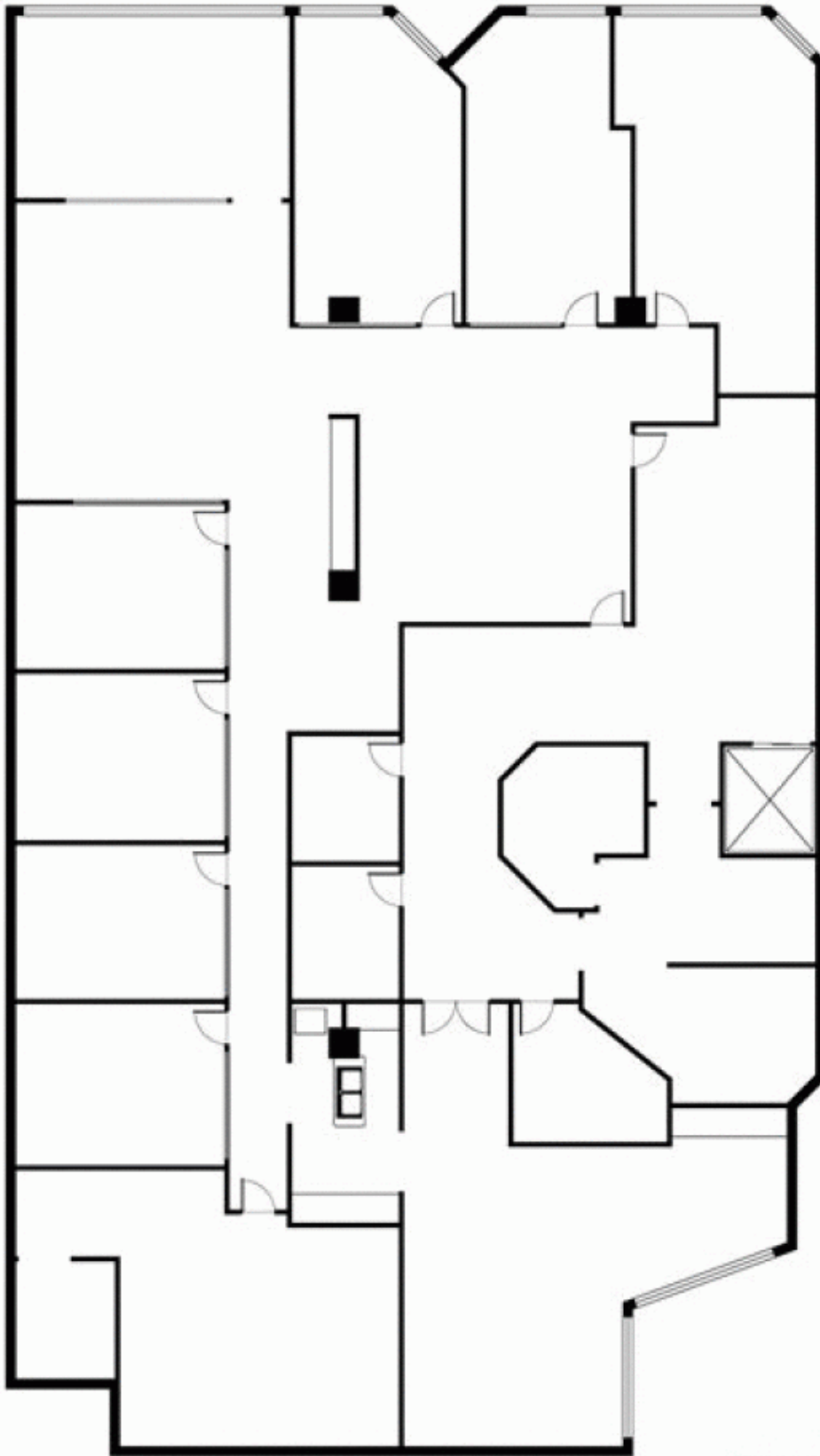
Type : Offices
Building Size : 394 sqm
View : <https://www.noonanproperty.com.au/sale/nsw/sydney-city/sydney/commercial/offices/5998626>



Tim Noonan
0416 286 129

[For full version visit the website](https://www.noonanproperty.com.au)

185 Liverpool Street, SYDNEY



Plans by
surroundpix
com.au
1300 30 32 40

This floor plan is intended as a guide only. Layout dimensions are approximate only. No representations or warranties of any nature whatsoever are given or intended. Any person using this information should rely on their own enquiries