

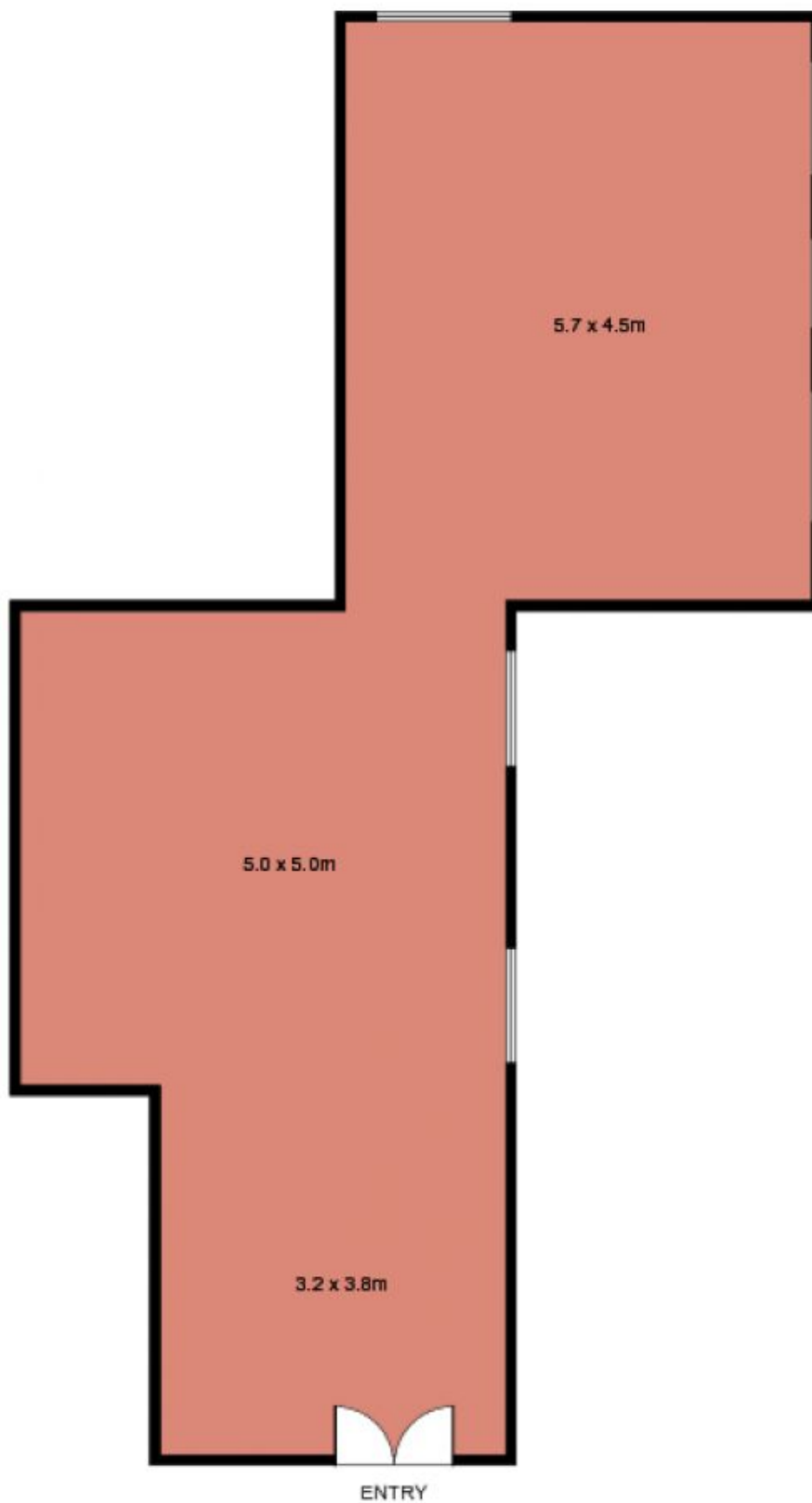
321 Pitt Street Sydney NSW

- Modern commercial suite with parking
- Envious corner positioning
- Excellent natural light throughout
- Two large window frontages
- Security car space included
- Views overlooking Town Hall
- Leased to longstanding business
- 3 year lease, expiring Jan 2019
- Fixed CPI annual rental increases
- Tenant pays all increases in Outgoings
- Net income: \$26,220 per annum approx
- Potential for significant rental growth
- On floor male and female amenities
- Common area shower facilities
- Modern and stylish CBD building

Type	: Offices
Building Size	: 79 sqm
View	: https://www.noonanproperty.com.au/sale/nsw/sydney-city/sydney/commercial/offices/5999152

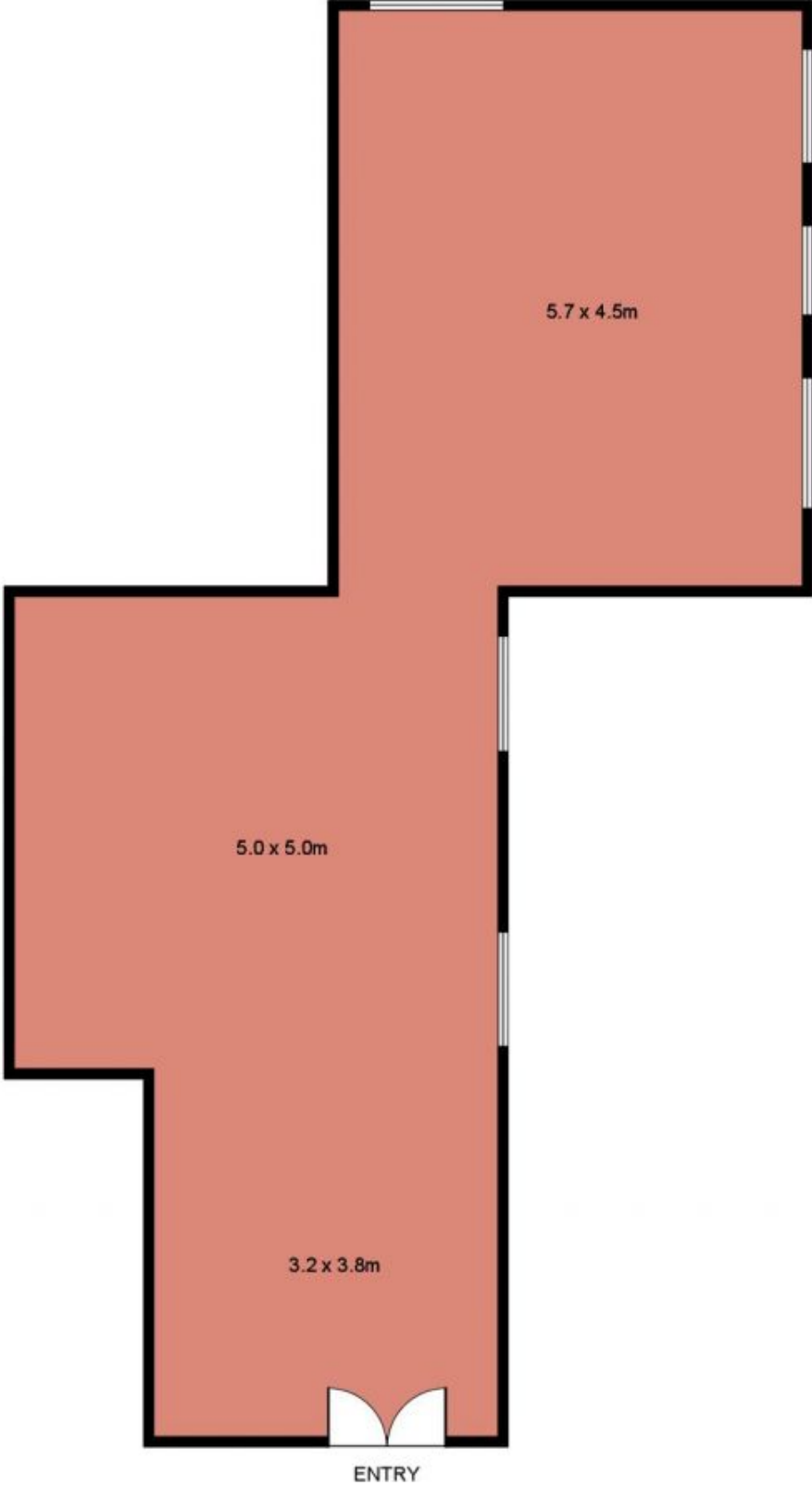
[For full version visit the website](#)

**Suite 511, Level 5, 321 Pitt Street,
SYDNEY**



This floor plan is intended as a guide only. Layout dimension are approximate only. No representation or warranties of any nature whatsoever are given or intended. Any person using this information should rely on their own enquiries.

**Suite 511, Level 5, 321 Pitt Street,
SYDNEY**



This floor plan is intended as a guide only. Layout dimension are approximate only. No representation or warranties of any nature whatsoever are given or intended. Any person using this information should rely on their own enquiries.