

84 Pitt Street Sydney NSW

- Prime commercial suite near Martin Place
- Open plan layout with plenty of natural light
- Superbly presented with modern finishes
- Freshly painted and new carpeting
- Regular and efficient floor plan
- Direct and prominent lift lobby exposure
- Individually controlled air conditioning
- On floor kitchen and bathroom facilities
- Modern and stylish CBD building and lobby
- Multiple car parking options nearby
- Prestigious and high profile CBD location
- Close to Wynyard and Martin Place
- Walking distance to Barangaroo and Circular Quay
- Surrounded by popular restaurants and bars
- Perfect small business office solution

Building Size : 47 sqm

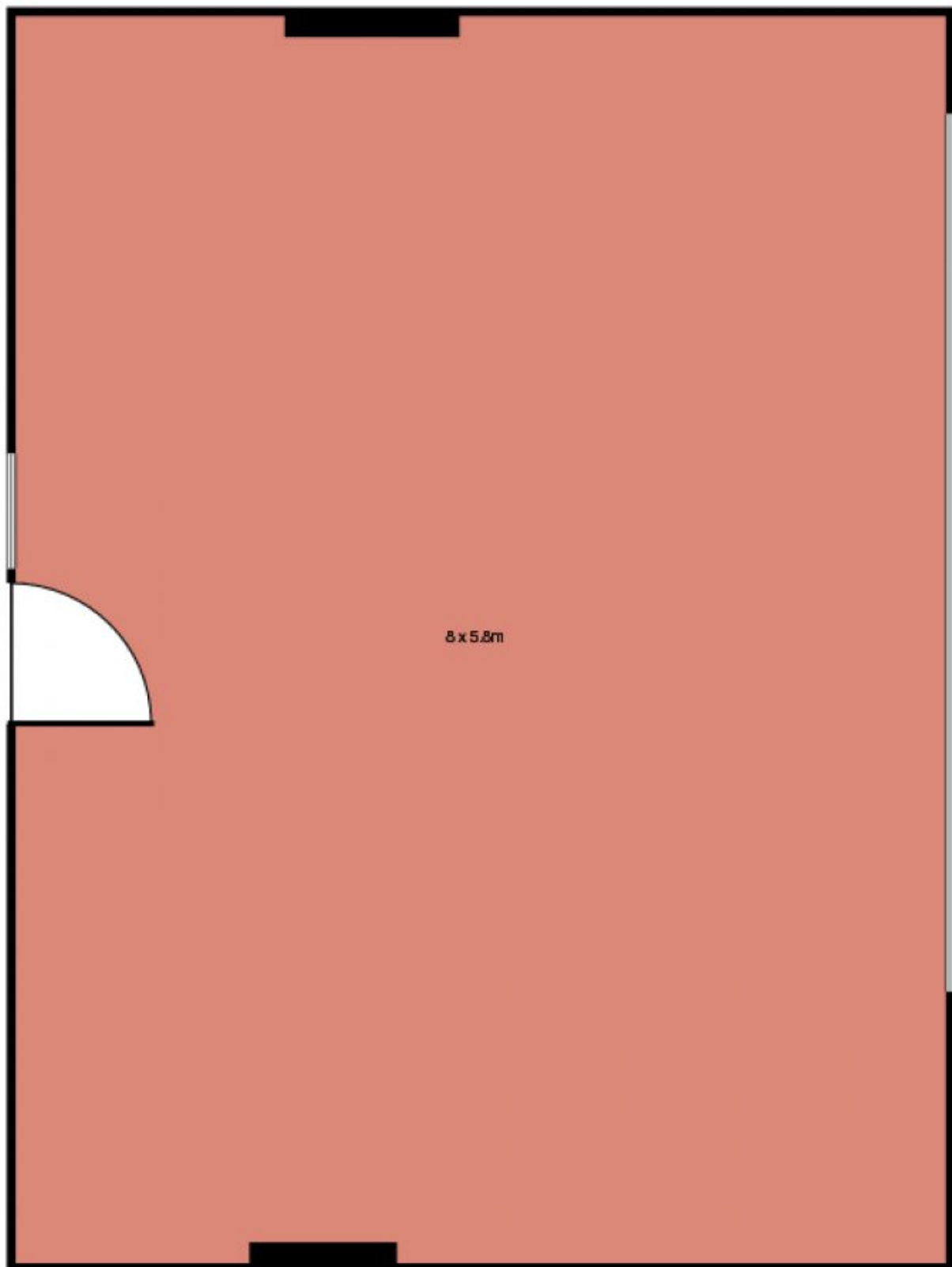
View : <https://www.noonanproperty.com.au/lease/nsw/sydney-city/sydney/commercial/offices/5999178>



Tim Noonan
02 9231 6000

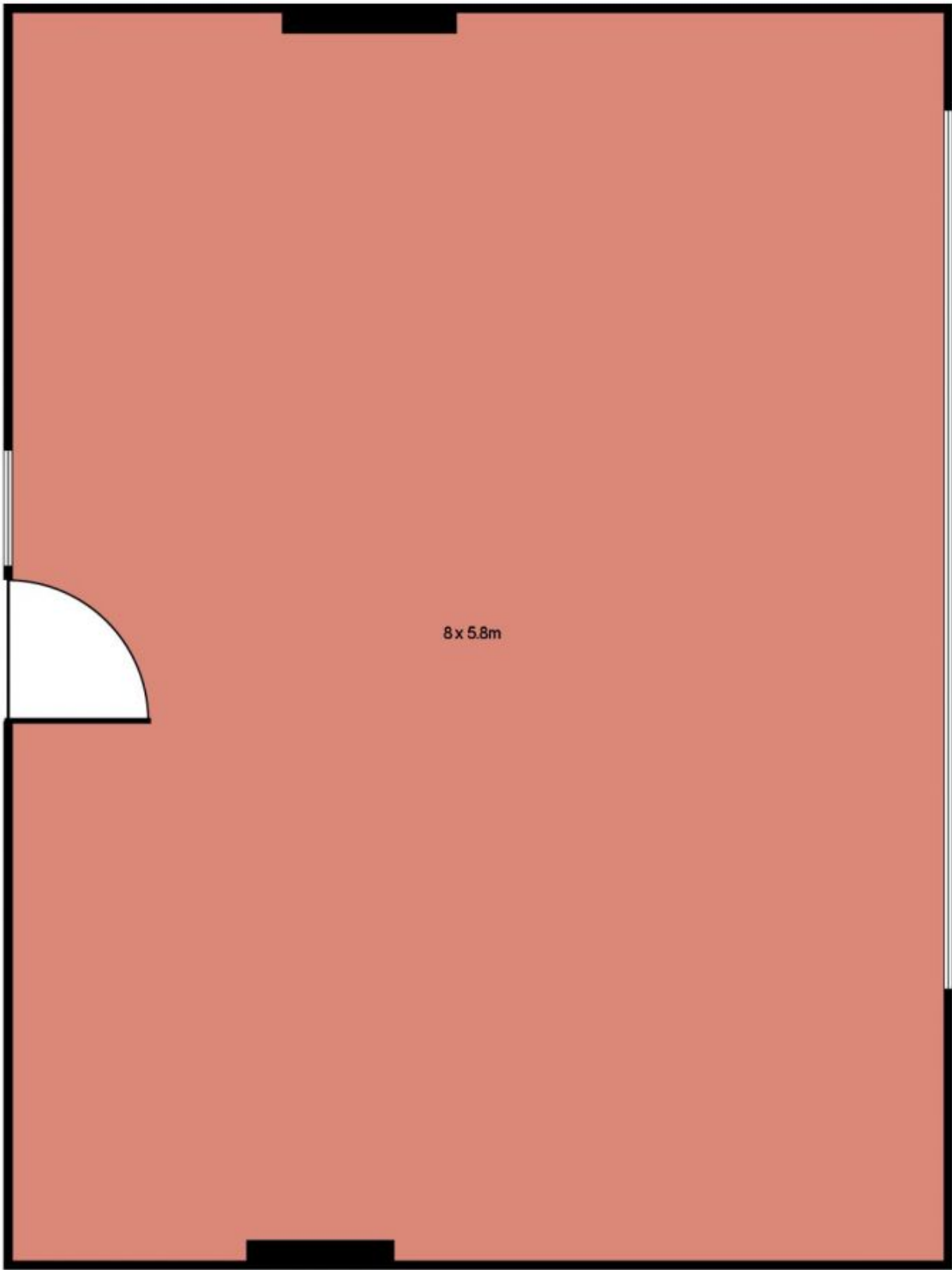
Size - 47 sqm approx

**Suite 703, 84 Pitt Street,
SYDNEY**



This floor plan is intended as a guide only. Layout dimension are approximate only. No representation or warranties of any nature whatsoever are given or intended. Any person using this information should rely on their own enquiries.

**Suite 703, 84 Pitt Street,
SYDNEY**



This floor plan is intended as a guide only. Layout dimension are approximate only. No representation or warranties of any nature whatsoever are given or intended. Any person using this information should rely on their own enquiries.