



## Level 4/64 Castlereagh Street Sydney NSW

- New and creative commercial space
- Landmark location near Martin Place
- Fully renovated and superbly presented
- High ceilings with exposed services
- Open plan with plenty of natural light
- Direct and prominent lift lobby exposure
- Freshly painted and new carpeting
- Internal kitchenette facilities
- Prestigious building with elegant finishes
- World famous Bulgari at ground level
- Prime CBD location near Hyde Park
- Close to Wynyard and Circular Quay
- Multiple car parking options nearby

Size - 64 sqm approx

Rental - \$4,500 per month plus GST

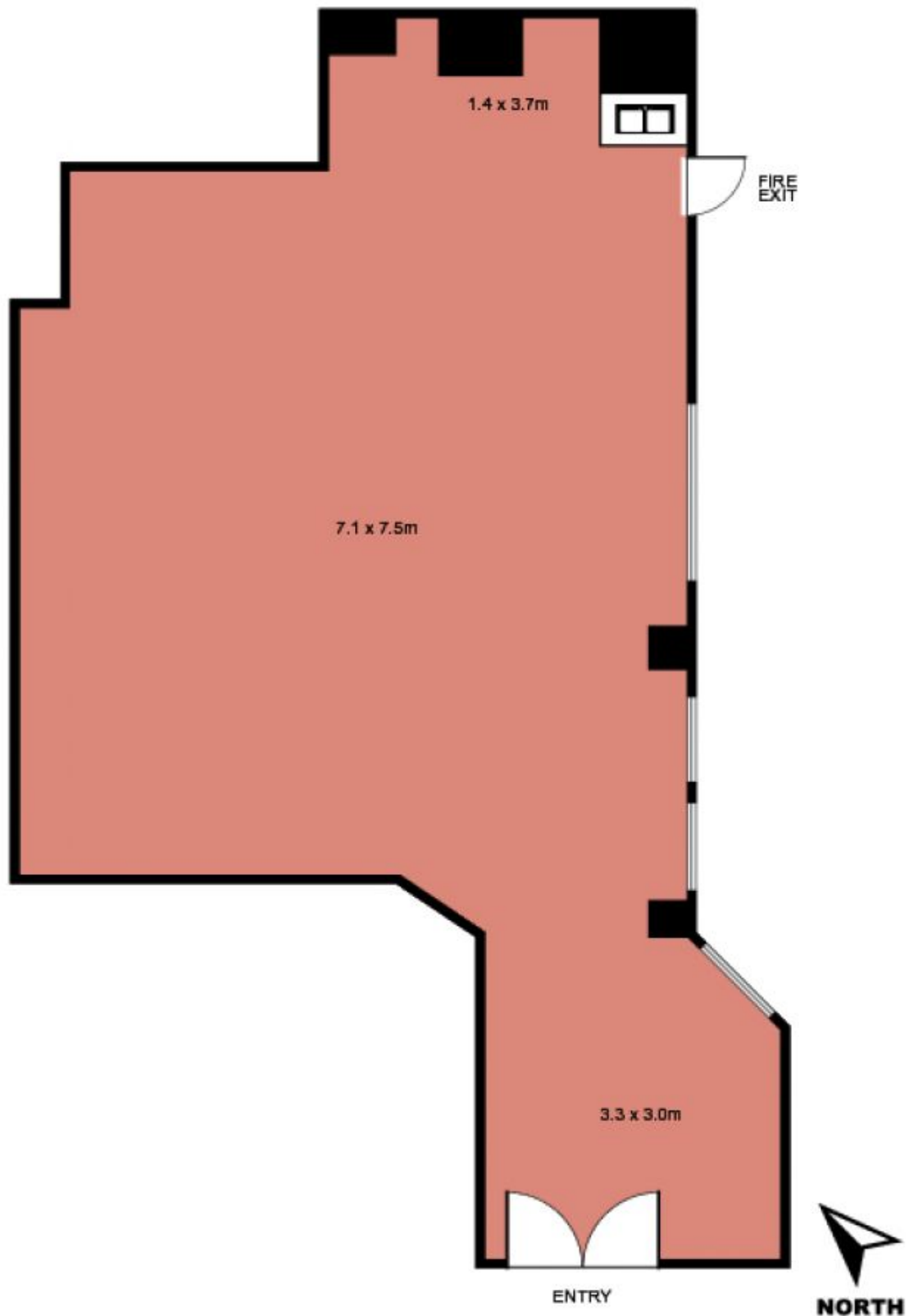
**Building Size** : 64 sqm

**View** : <https://www.noonanproperty.com.au/lease/nsw/sydney-city/sydney/commercial/offices/5999181>



**Tim Noonan**  
02 9231 6000

**Suite 14, Level 4, 64 Castlereagh Street,  
SYDNEY**



This floor plan is intended as a guide only. Layout dimension are approximate only. No representation or warranties of any nature whatsoever are given or intended. Any person using this information should rely on their own enquiries.