



## Level 6/99 York Street Sydney NSW

- Modern and functional commercial suite
- Adaptable and versatile fitout included
- Landlord will renovate to suit requirements
- Tenant selects new carpet and paint colours
- Mixture of offices plus open work spaces
- Large windows overlooking Clarence Street
- On floor kitchen and bathrooms facilities
- Direct and prominent lift lobby exposure
- Attractive and stylish commercial building
- Striking main lobby area with three lifts
- Minutes to Wynyard and Town Hall Stations
- Popular, convenient and vibrant location
- Close to Barangaroo and Hyde Park
- On site basement car spaces available
- Flexible lease terms available

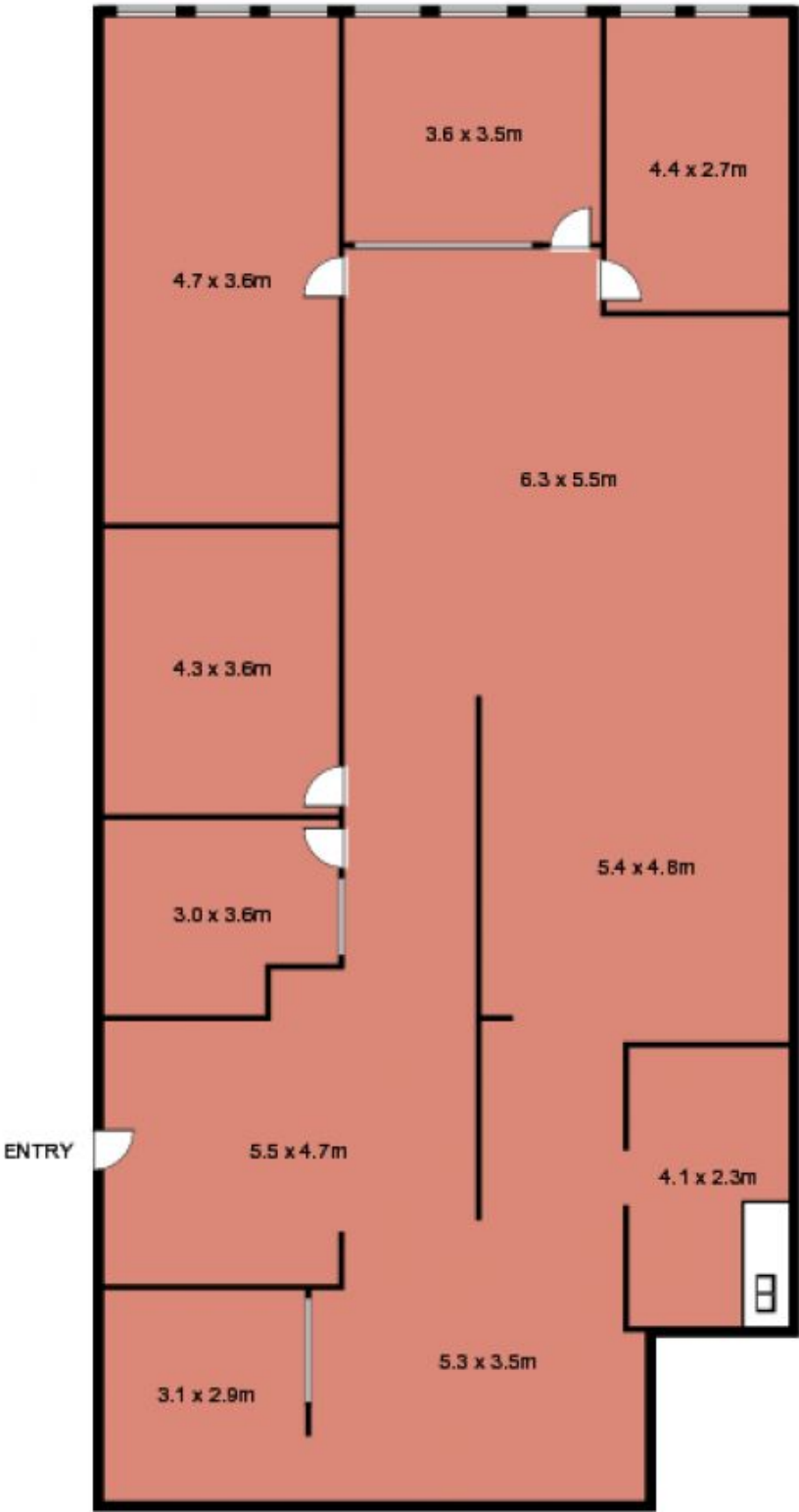
**Building Size** : 220 sqm  
**Land Size** : 220 sqm  
**View** : <https://www.noonanproperty.com.au/lease/nsw/sydney-city/sydney/commercial/offices/5999183>



**Tim Noonan**  
**02 9231 6000**

Size - 220 sqm approx

**Suite 601, 99 York Street,  
SYDNEY**



This floor plan is intended as a guide only. Layout dimension are approximate only. No representation or warranties of any nature whatsoever are given or intended. Any person using this information should rely on their own enquiries.

**Suite 601, 99 York Street,  
SYDNEY**



This floor plan is intended as a guide only. Layout dimension are approximate only. No representation or warranties of any nature whatsoever are given or intended. Any person using this information should rely on their own enquiries.