



## Level 5/131 Clarence Street Sydney NSW

- Professional and attractive commercial space
- Comprehensive fitout with workstations included
- Exclusive balcony area with entire building frontage
- Floor to ceiling windows overlooking Clarence Street
- Impressive reception area and striking boardroom
- Two managerial offices plus four internal offices
- Open plan workspace fitted with six workstations
- Data and utilities room plus ample storage space
- High ceilings and halogen down lighting
- Internal kitchen and on floor bathrooms facilities
- Modern boutique commercial building
- Contemporary lobby with impressive finishes
- Landmark location in major growth precinct
- Minutes to Wynyard Walk and Martin Place
- Close to Circular Quay and Wynyard Stations
- Gateway positioning for Barangaroo
- Next door to Machiavelli Ristorante

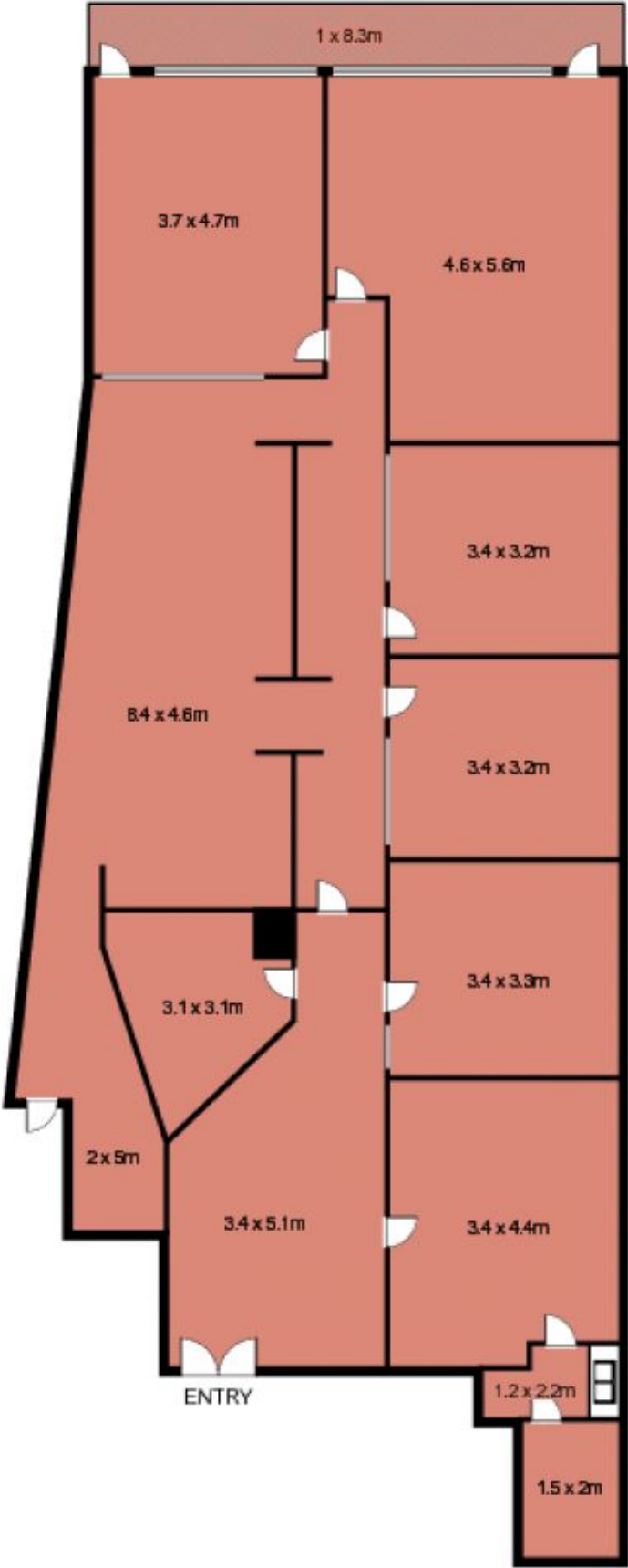
**Building Size** : 194 sqm

**View** : <https://www.noonanproperty.com.au/lease/nsw/sydney-city/sydney/commercial/offices/5999189>



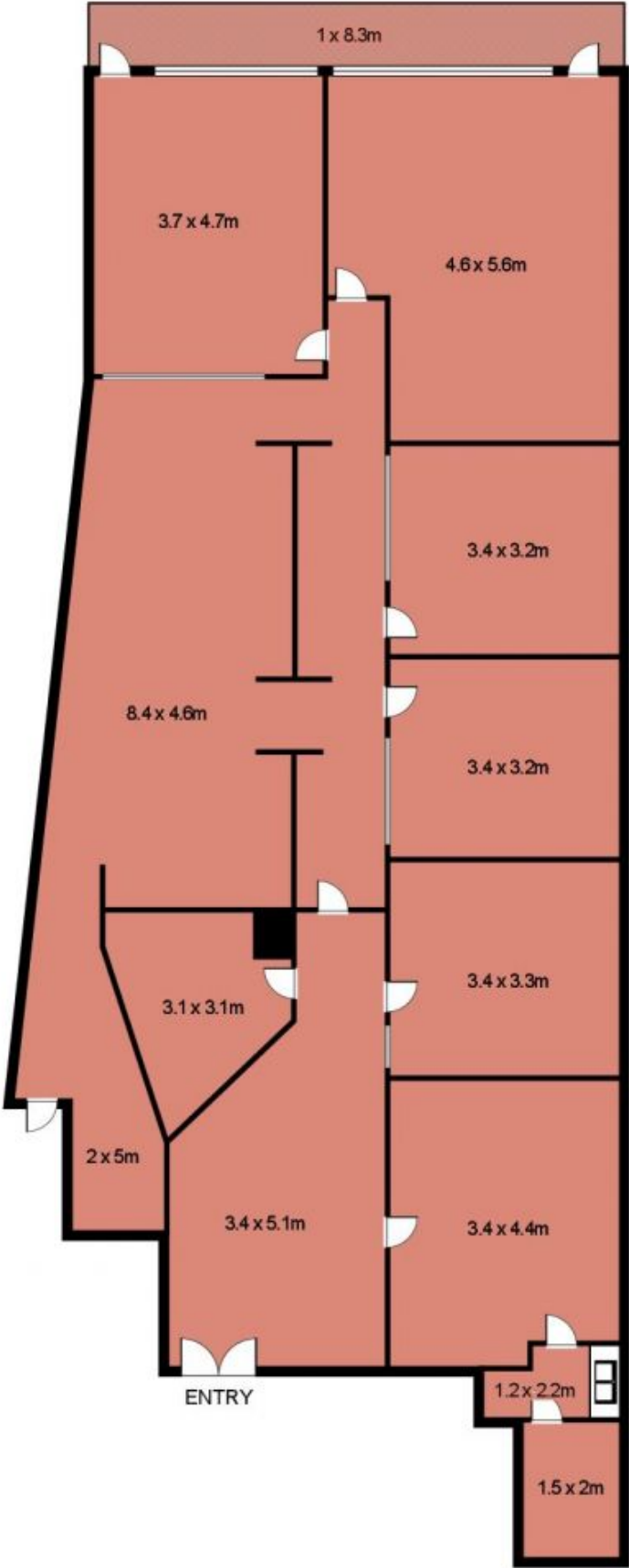
**Tim Noonan**  
**02 9231 6000**

Suite 12, 131 Clarence Street,  
SYDNEY



This floor plan is intended as a guide only. Layout dimension are approximate only. No representation or warranties of any nature whatsoever are given or intended. Any person using this information should rely on their own enquiries.

**Suite 12, 131 Clarence Street,  
SYDNEY**



This floor plan is intended as a guide only. Layout dimension are approximate only. No representation or warranties of any nature whatsoever are given or intended. Any person using this information should rely on their own enquiries.