



## 1006/50 Clarence Street Sydney NSW

- Modern and impressive commercial suite
- Stylish, professional and efficient space
- Freshly renovated including new carpeting
- Adaptable and versatile fitout included
- Large windows and excellent natural light
- Reception area with connecting boardroom
- Two executive offices plus open work spaces
- Direct and prominent lift lobby exposure
- High rise positioning and onsite shower facilities
- Modern and prominent commercial building
- Striking main lobby area with three lifts
- Premier location in major growth precinct
- Surrounded by popular restaurants and bars
- Close to Wynyard, Martin Place and Barangaroo
- Separate security car space available if required

**Building Size** : 77 sqm

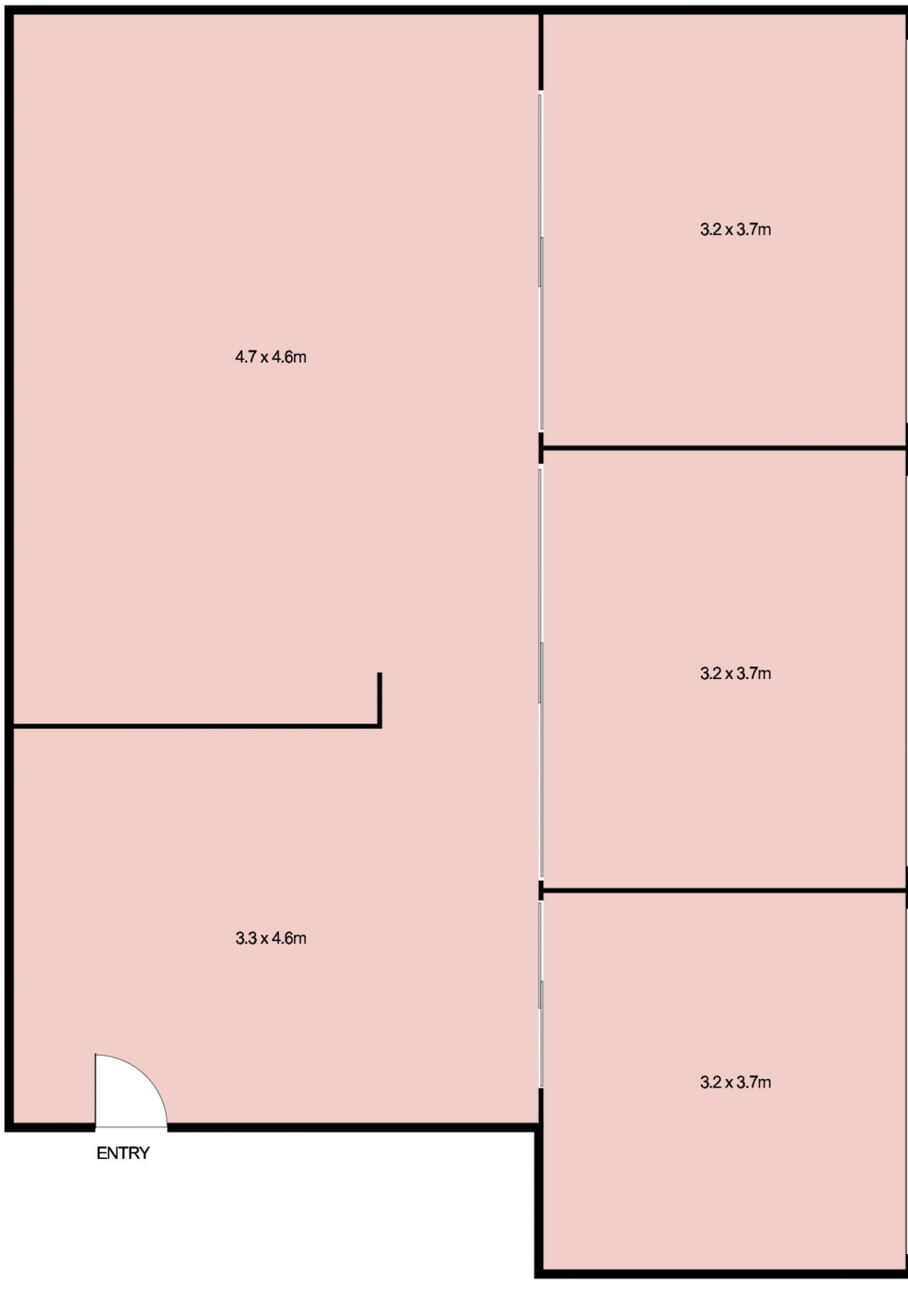
**View** : <https://www.noonanproperty.com.au/lease/nsw/sydney-city/sydney/commercial/offices/5999191>



**Tim Noonan**  
**02 9231 6000**

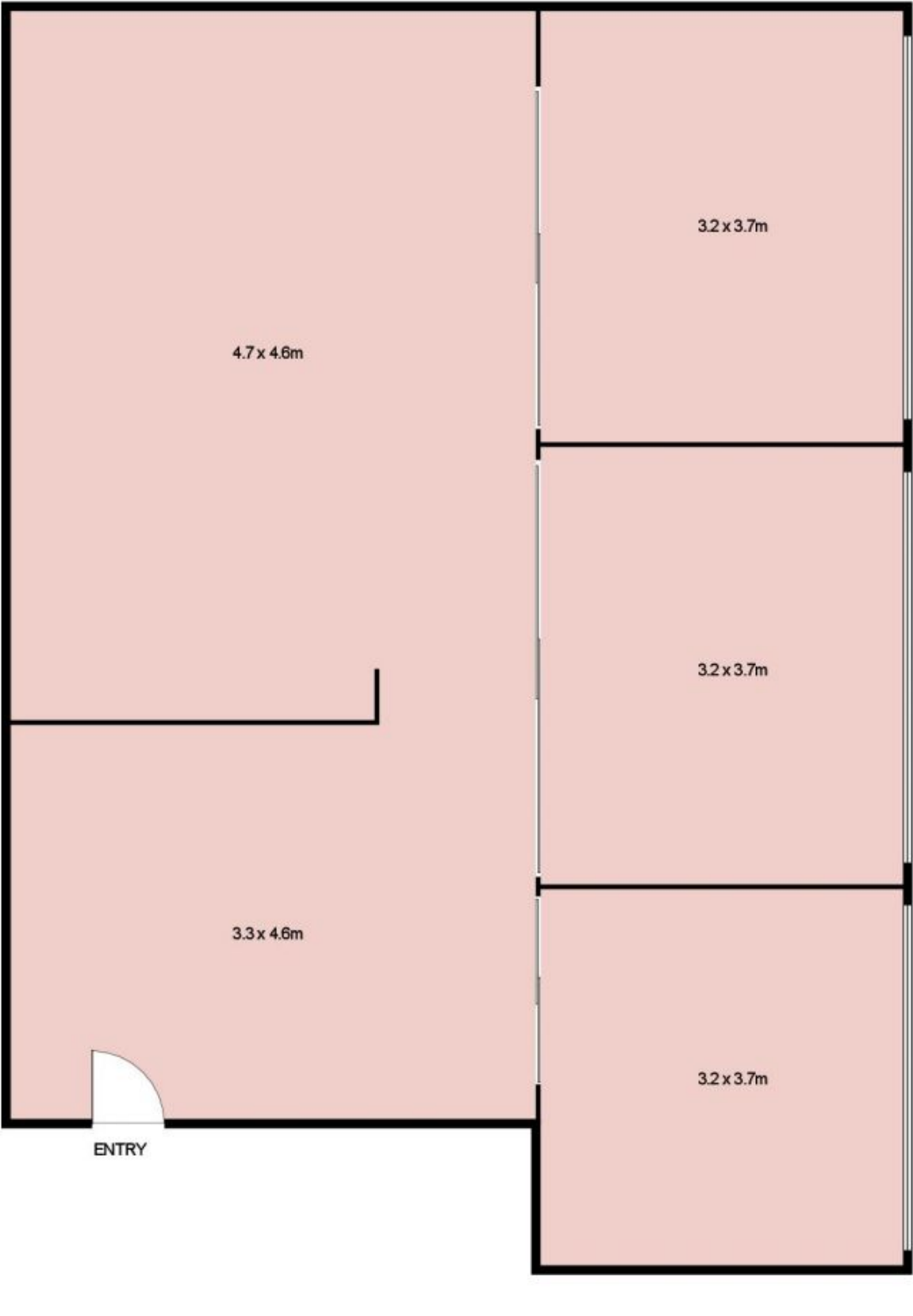
50 Clarence Street is a high quality commercial building in

**Suite 10.6, 50 Clarence Street,  
SYDNEY**



This floor plan is intended as a guide only. Layout dimension are approximate only. No representation or warranties of any nature whatsoever are given or intended. Any person using this information should rely on their own enquiries.

**Suite 10.6, 50 Clarence Street,  
SYDNEY**



This floor plan is intended as a guide only. Layout dimension are approximate only. No representation or warranties of any nature whatsoever are given or intended. Any person using this information should rely on their own enquiries.