



321 Pitt Street Sydney NSW

- Superbly presented commercial suite
- Immaculate fitout with modern finishes
- Expansive windows and excellent light
- Large boardroom with audio visual display
- Impressive reception and waiting area
- Mixture of offices and open work spaces
- East facing aspect overlooking Pitt Street
- Internal kitchenette and integrated storage
- Fibre optic cabling with circa 500 Mbps
- Direct and prominent lift lobby exposure
- Modern and stylish CBD building and lobby
- Quality building services including three lifts
- Minutes to Town Hall and World Square
- Close to Hyde Park and Darling Harbour
- Secure onsite car space available if required

Building Size : 280 sqm

View

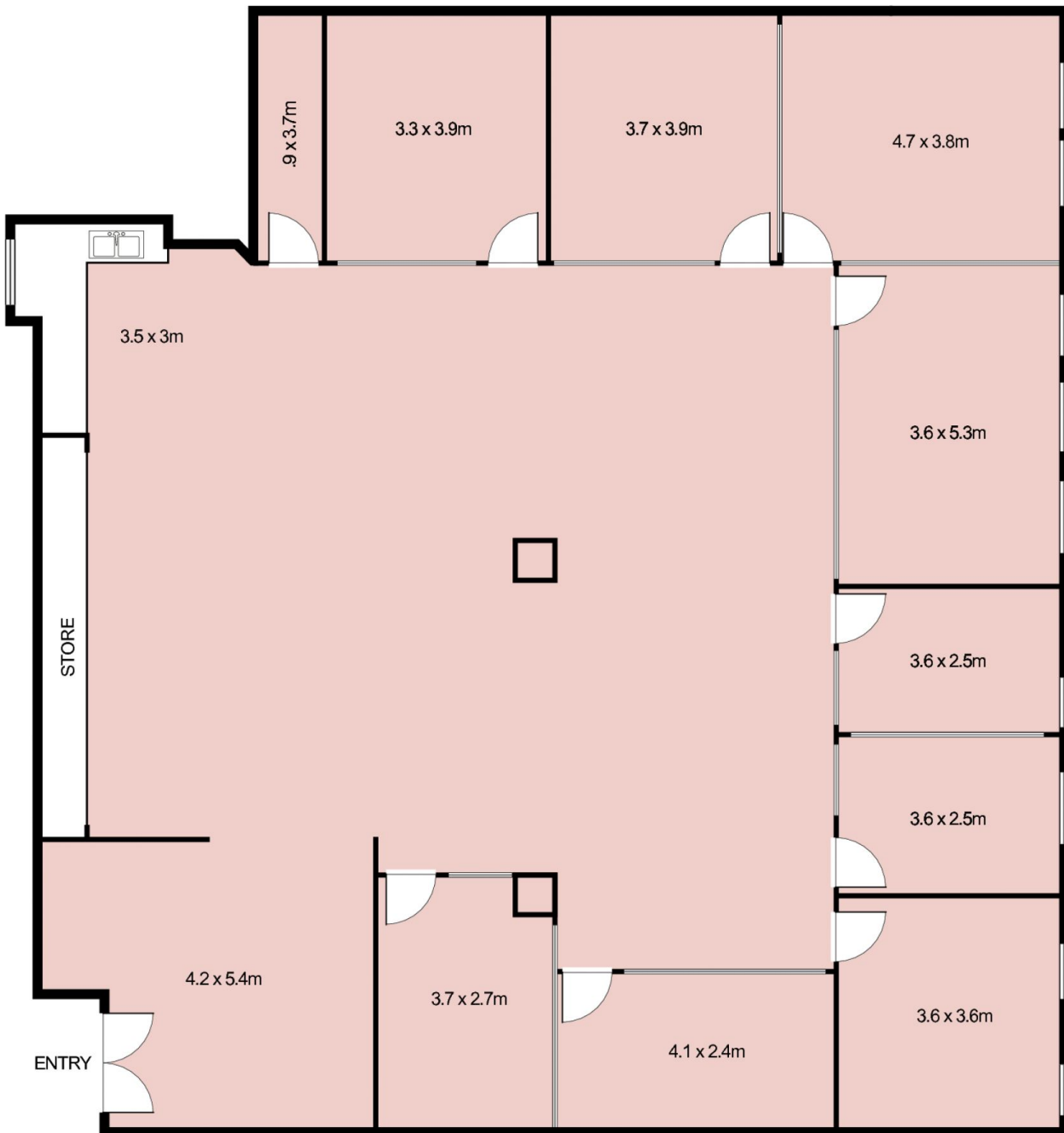
: <https://www.noonanproperty.com.au/lease/nsw/sydney-city/sydney/commercial/offices/5999192>



Tim Noonan
02 9231 6000

Size - 280 sqm

Level 5, 321 Pitt Street, SYDNEY



This floor plan is intended as a guide only. Layout dimension are approximate only. No representation or warranties of any nature whatsoever are given or intended. Any person using this information should rely on their own enquiries.

Level 5, 321 Pitt Street, SYDNEY



This floor plan is intended as a guide only. Layout dimension are approximate only. No representation or warranties of any nature whatsoever are given or intended. Any person using this information should rely on their own enquiries.