

NOONAN PROPERTY



Level 1/23 O'Connell Street Sydney NSW

- Modern and attractive commercial floor
- Stylish, professional and efficient space
- Quality fitout included with high spec finishes
- Large reception and impressive boardroom
- Client function area with audio visual display
- Mixture of offices and open plan work areas
- Internal kitchen facilities and breakout space
- Expansive front and rear window frontages
- On floor male and female bathrooms
- Prominent and prestigious building
- Striking main lobby with marble finishes
- Quality building services including three lifts
- Full furniture package available if required
- Surrounded by popular restaurants and bars
- Close to Wynyard and Circular Quay
- Multiple car parking options nearby

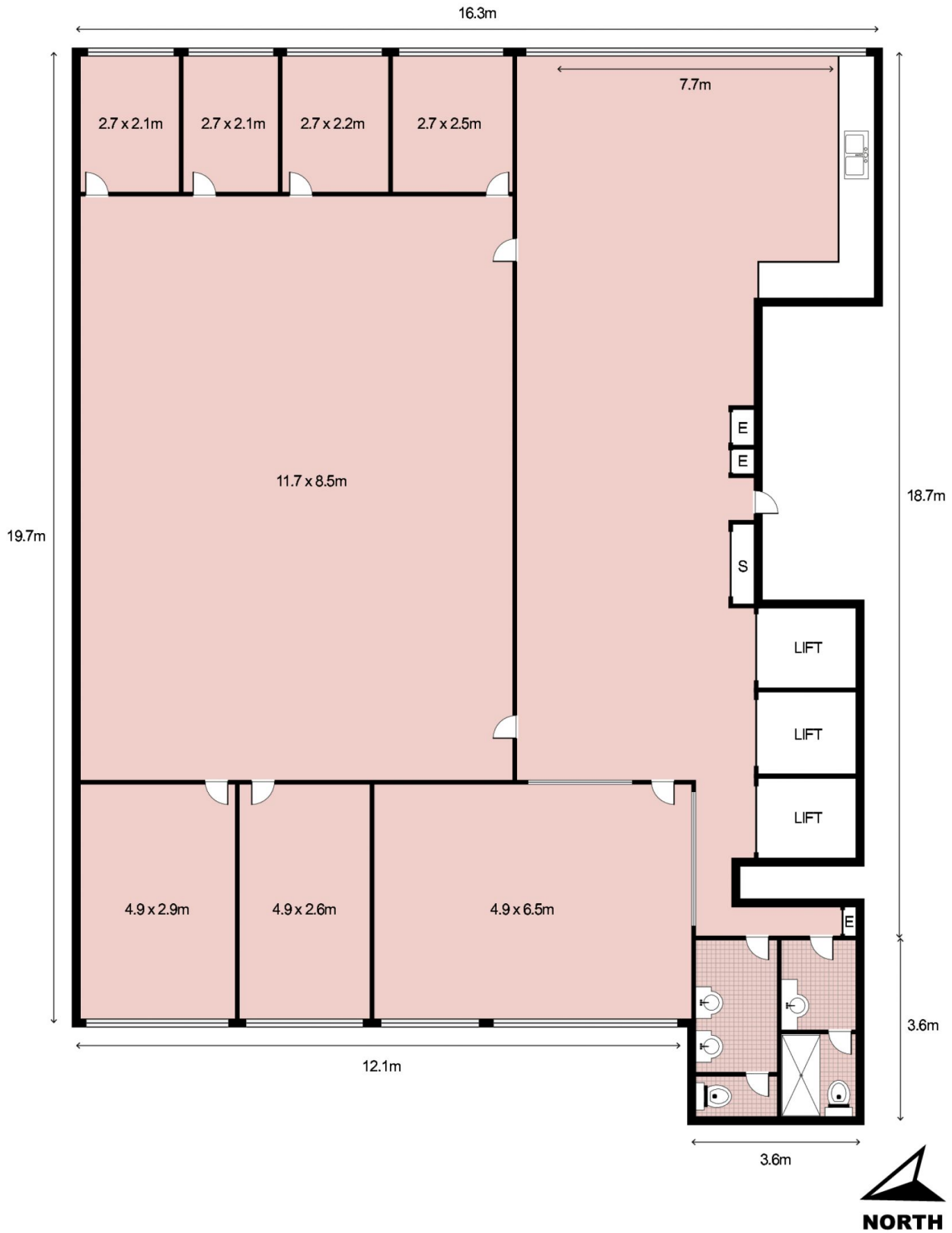
Building Size : 300 sqm

View : <https://www.noonanproperty.com.au/lease/nsw/sydney-city/sydney/commercial/offices/5999195>



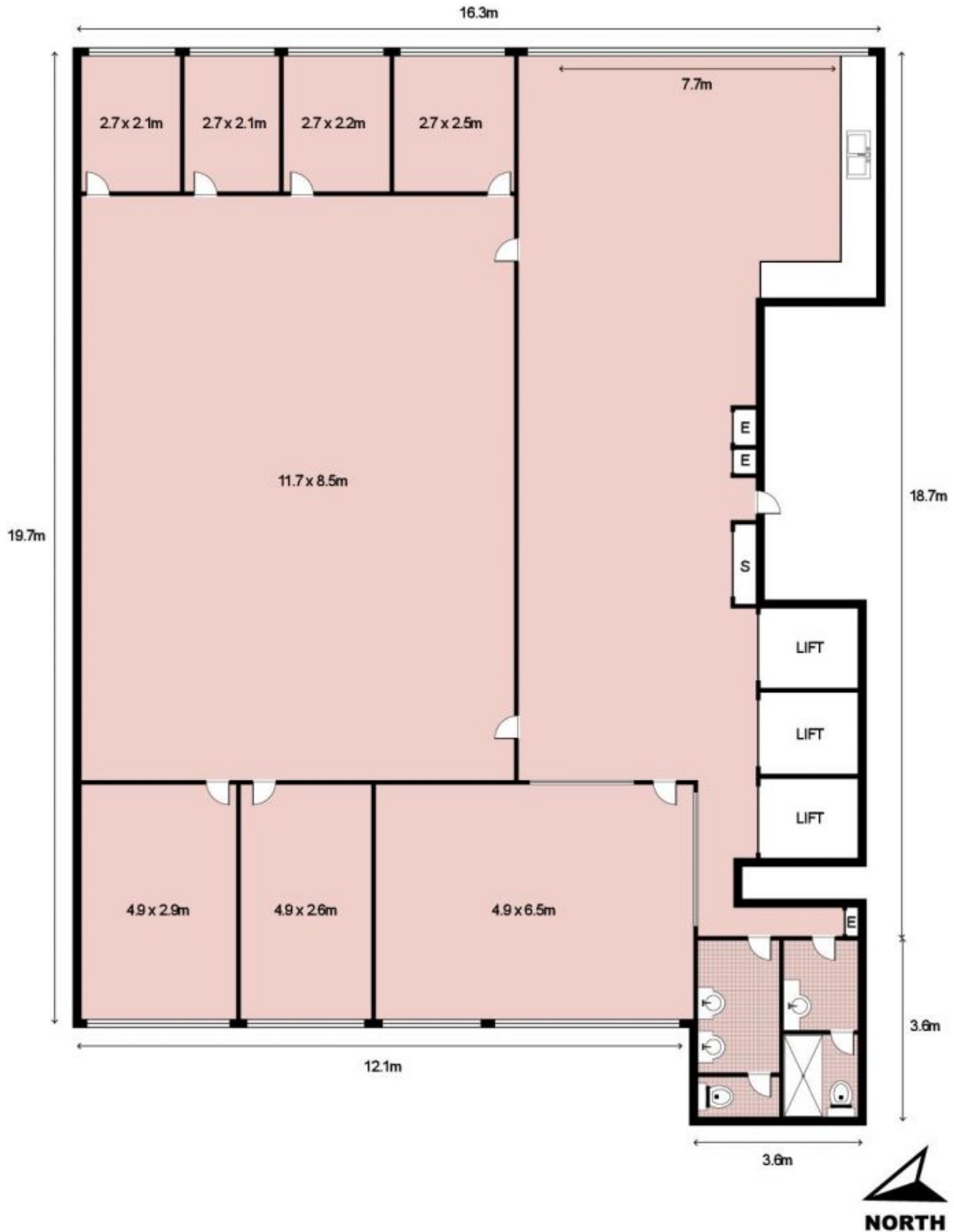
Tim Noonan
02 9231 6000

Level 1, 23 OConnell Street, SYDNEY



This floor plan is intended as a guide only. Layout dimension are approximate only. No representation or warranties of any nature whatsoever are given or intended. Any person using this information should rely on their own enquiries.

Level 1, 23 OConnell Street, SYDNEY



This floor plan is intended as a guide only. Layout dimension are approximate only. No representation or warranties of any nature whatsoever are given or intended. Any person using this information should rely on their own enquiries.