



## 8/49 York Street Sydney NSW

- Quality whole floor opposite Wynyard Park
- Professional and efficient commercial space
- Expansive east and west window frontages
- Spectacular views overlooking Wynyard Park
- Outstanding natural light and high ceilings
- Freshly painted and high quality presentation
- Internal kitchen area with integrated storage
- Prominent building within 100m of Wynyard
- Highly coveted location near Circular Quay
- Walking distance to Barangaroo and Martin Place
- Surrounded by billions of new CBD development
- Multiple car parking options available nearby

Size - 230 sqm approx

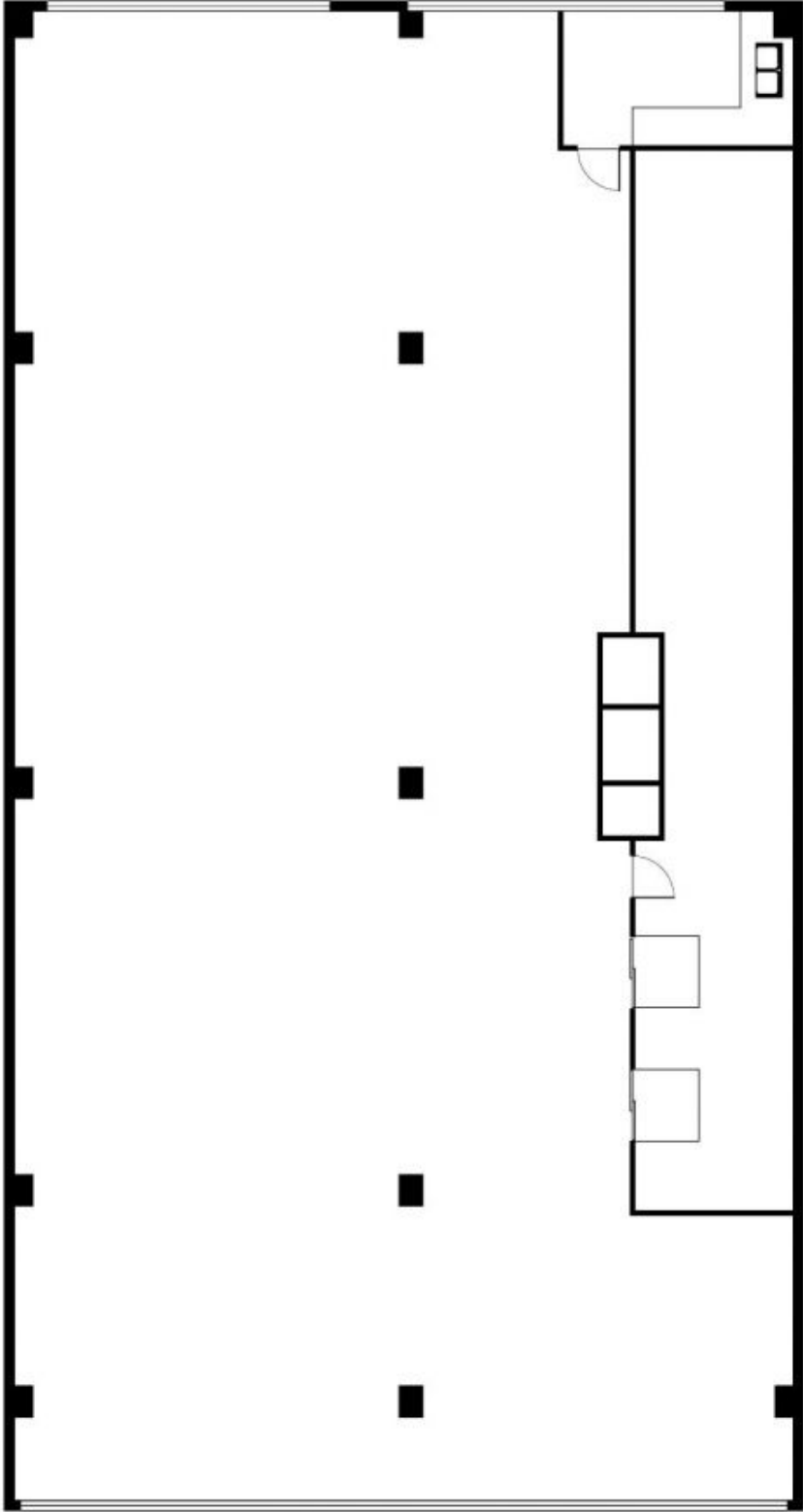
Rental - \$600 per sqm per annum plus GST  
(\$138,000 per annum)

**Building Size** : 230 sqm  
**View** : <https://www.noonanproperty.com.au/lease/nsw/sydney-city/sydney/commercial/offices/5999199>



**Tim Noonan**  
02 9231 6000

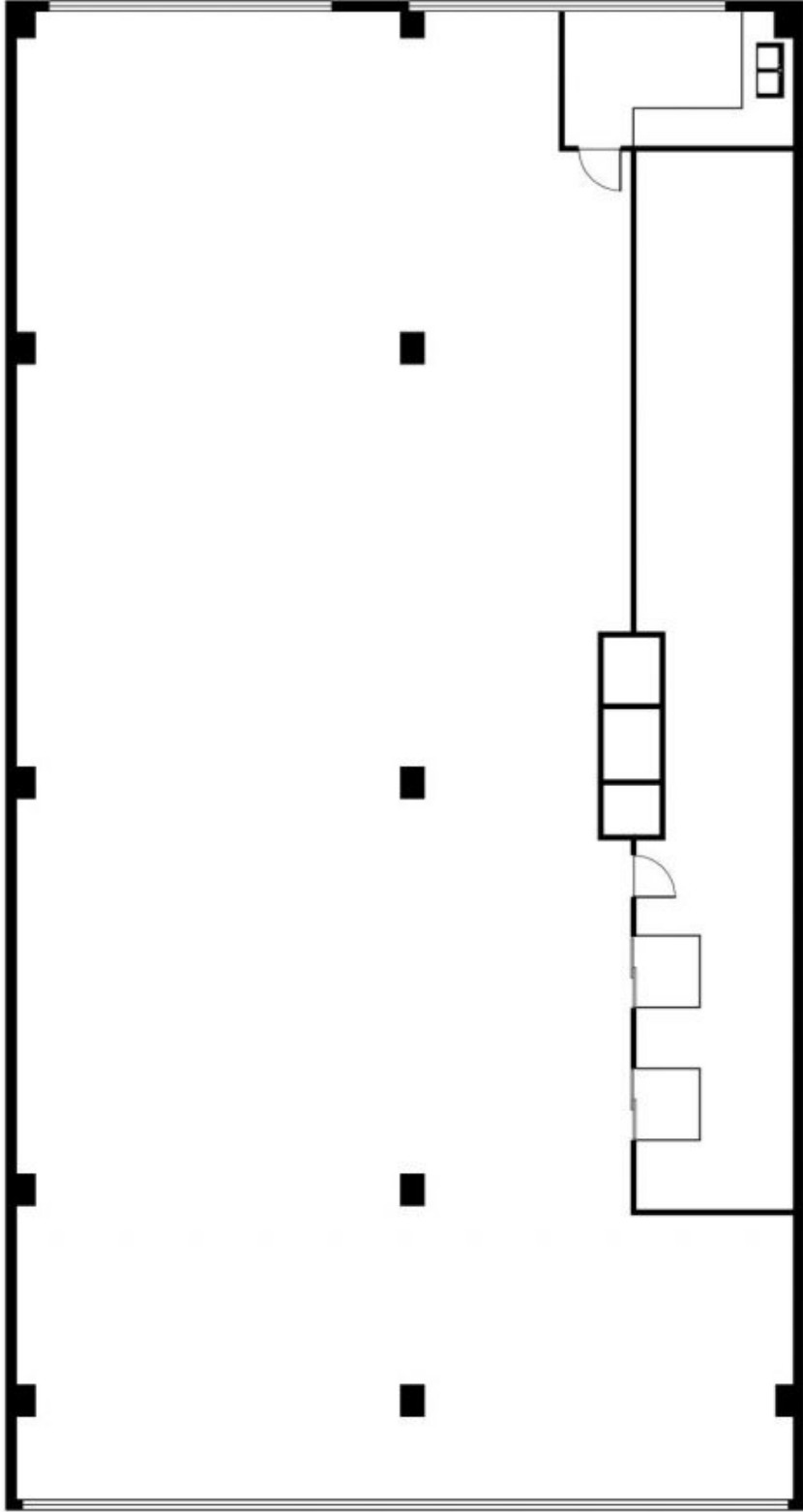
**Level 8/49 York Street,  
SYDNEY 2000**



Plans by  
**surroundpix**  
com.au  
1300 30 32 40

This floor plan is intended as a guide only. Layout dimension are approximate only. No representation or warranties of any nature whatsoever are given or intended. Any person using this information should rely on their own enquiries.

**Level 8/49 York Street,  
SYDNEY 2000**



Plans by  
**surroundpix**  
com.au  
1300 30 32 40

This floor plan is intended as a guide only. Layout dimension are approximate only. No representation or warranties of any nature whatsoever are given or intended. Any person using this information should rely on their own enquiries.