



9/131 Clarence Street Sydney NSW

- Stylish commercial suite with a quality fitout
- Creatively designed to maximise light and space
- Timber floors, glass partitioning and LED lighting
- Mixture of offices and open plan work spaces
- High ceilings and good natural light throughout
- Floor to ceiling windows overlooking Kent Street
- Balcony terrace with complete building frontage
- Internal kitchenette and shower facilities
- Modern and boutique commercial building
- Contemporary lobby with striking finishes
- Prime CBD location near Wynyard Station
- Minutes to Wynyard Walk and Barangaroo
- Close to Circular Quay and Martin Place
- Surrounded by billions of new development
- Next door to Machiavelli Ristorante

Building Size : 196 sqm

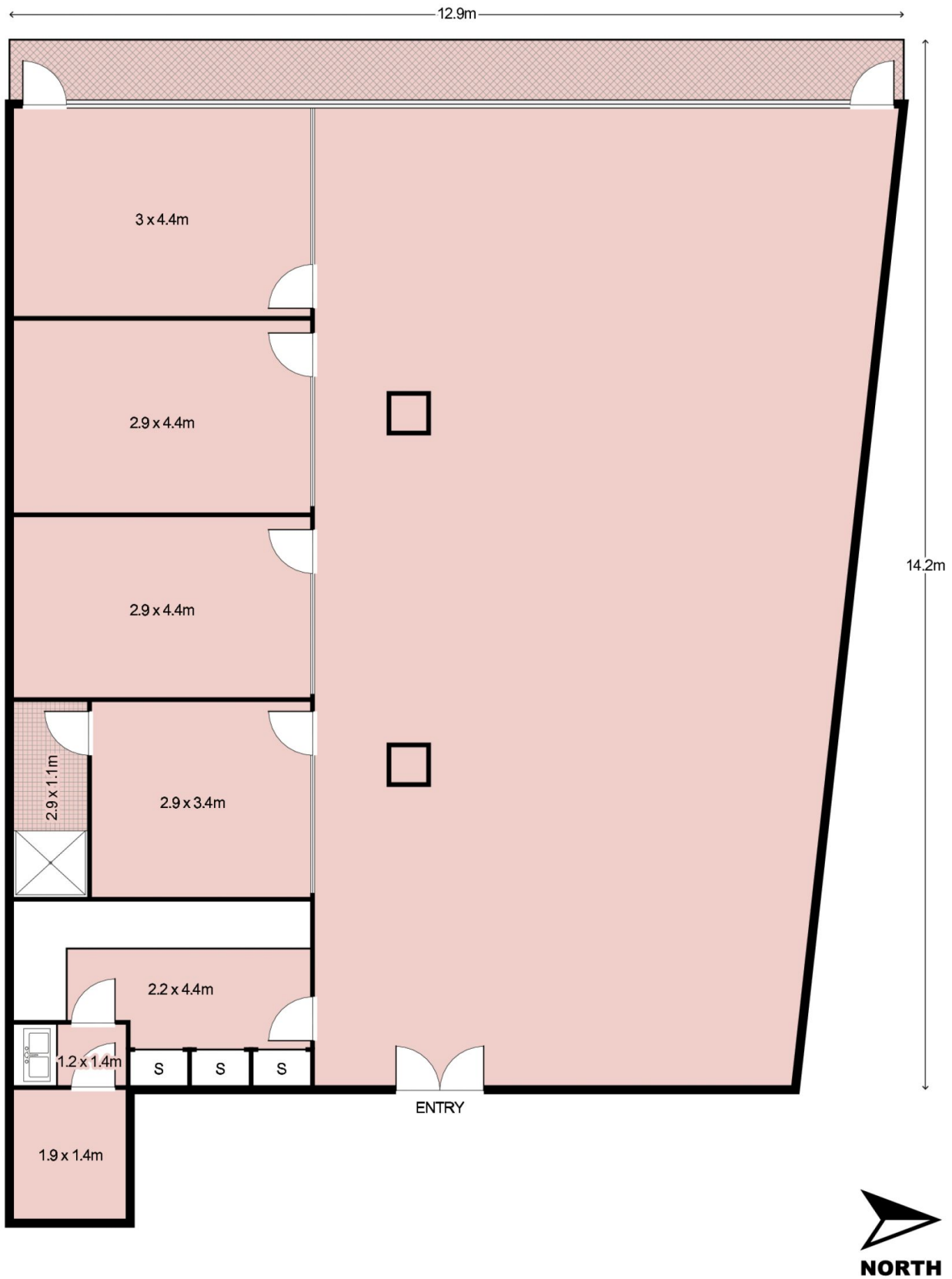
View : <https://www.noonanproperty.com.au/lease/nsw/sydney-city/sydney/commercial/offices/5999200>



Tim Noonan
02 9231 6000

Size - 196 sqm approx.

Suite 9, Level 3, 131 Clarence Street, SYDNEY



This floor plan is intended as a guide only. Layout dimension are approximate only. No representation or warranties of any nature whatsoever are given or intended. Any person using this information should rely on their own enquiries.

Suite 9, Level 3, 131 Clarence Street, SYDNEY



This floor plan is intended as a guide only. Layout dimension are approximate only. No representation or warranties of any nature whatsoever are given or intended. Any person using this information should rely on their own enquiries.