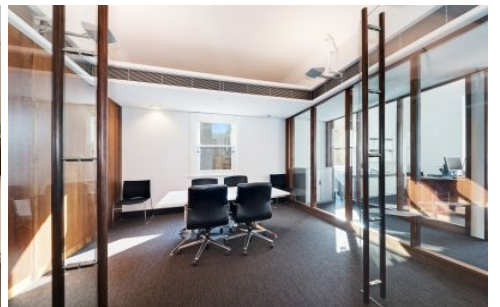


NOONAN PROPERTY



Level 10/67 Castlereagh Street Sydney NSW

Noonan Property has been exclusively appointed to offer for sale Level 10, Culwulla Chambers, 67 Castlereagh Street, Sydney.

- Stunning commercial floor of unrivalled quality
- Prominent, distinguished and inspired workspace
- Highly coveted CBD location near Martin Place
- Meticulously renovated with refined interiors
- High exposed ceilings maximising light and space
- Light filled with 4 expansive window frontages
- Views overlooking King and Castlereagh Streets
- Exceptional fitout included with bespoke finishes
- European timbers and spot lighting throughout
- Mixture of exec office and open plan workspaces
- Two ultra-impressive client meeting/boardrooms
- On floor kitchen, bathroom and shower facilities
- Secure basement storage unit on a separate title

Building Size : 400 sqm

View : <https://www.noonanproperty.com.au/sale/nsw/sydney-city/sydney/commercial/offices/5999208>



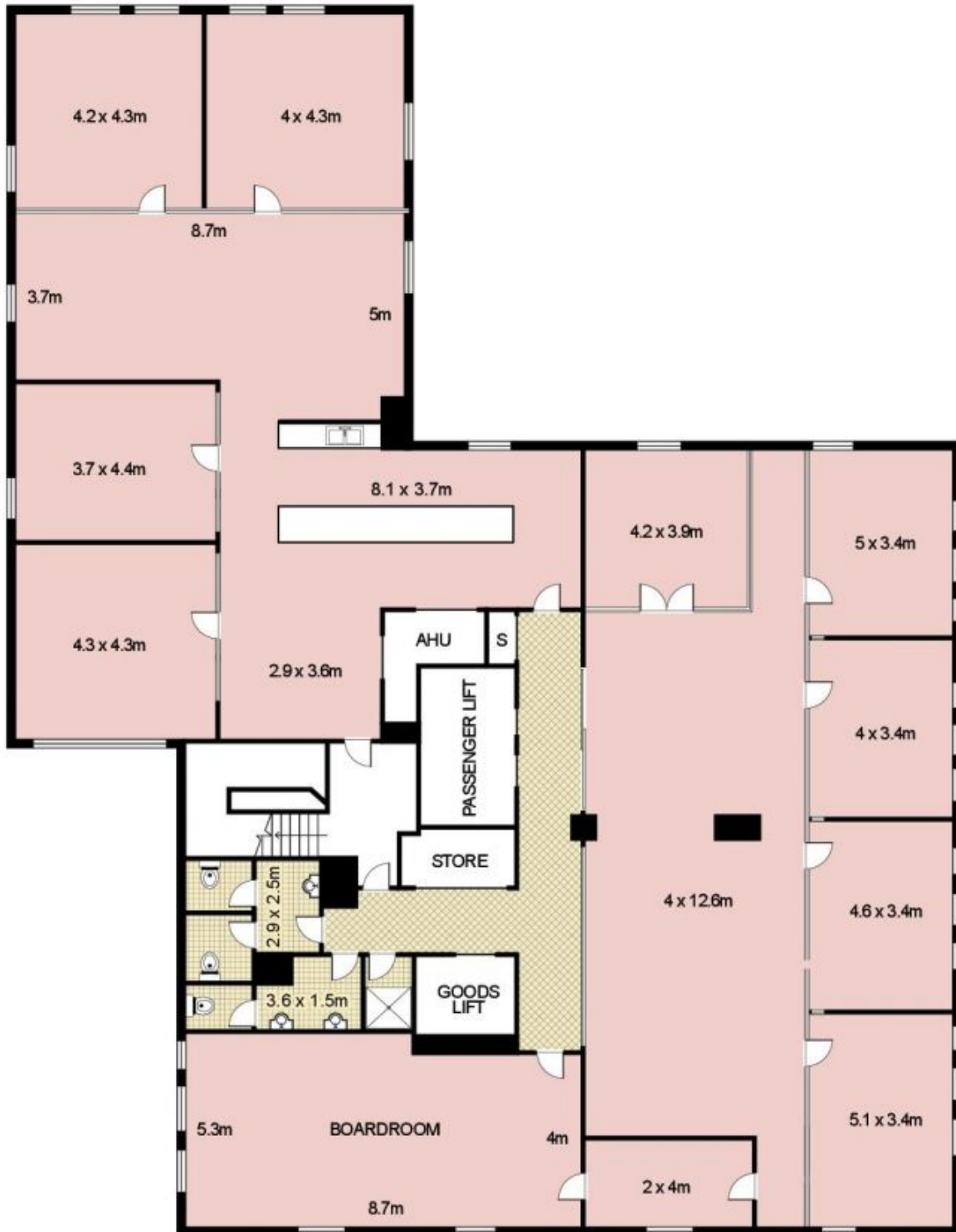
Tim Noonan
02 9231 6000

Level 10, 67 Castlereagh Street, SYDNEY



This floor plan is intended as a guide only. Layout dimension are approximate only. No representation or warranties of any nature whatsoever are given or intended. Any person using this information should rely on their own enquiries.

Level 10, 67 Castlereagh Street, SYDNEY



This floor plan is intended as a guide only. Layout dimension are approximate only. No representation or warranties of any nature whatsoever are given or intended. Any person using this information should rely on their own enquiries.