



70 Castlereagh Street Sydney NSW

Noonan Property has been exclusively appointed to offer for sale Level 12, Chanel Building, 70 Castlereagh Street, Sydney.

- Spectacular whole floor commercial penthouse
- The Jewel in the Crown of Castlereagh Street
- Light filled with two expansive window frontages
- Envious building with prime corner positioning
- Prominent and attractive views of Hyde Park
- Overlooking King Street and the CBD skyline
- Blue ribbon location opposite the MLC Centre
- Recently renovated commercial fitout included
- Mixture of exec office and open plan workspaces
- Impressive reception area and client boardroom
- Exclusive on floor kitchen and bathroom facilities
- Efficient and easily sub dividable floor plan
- Prestigious building with stunning new façade

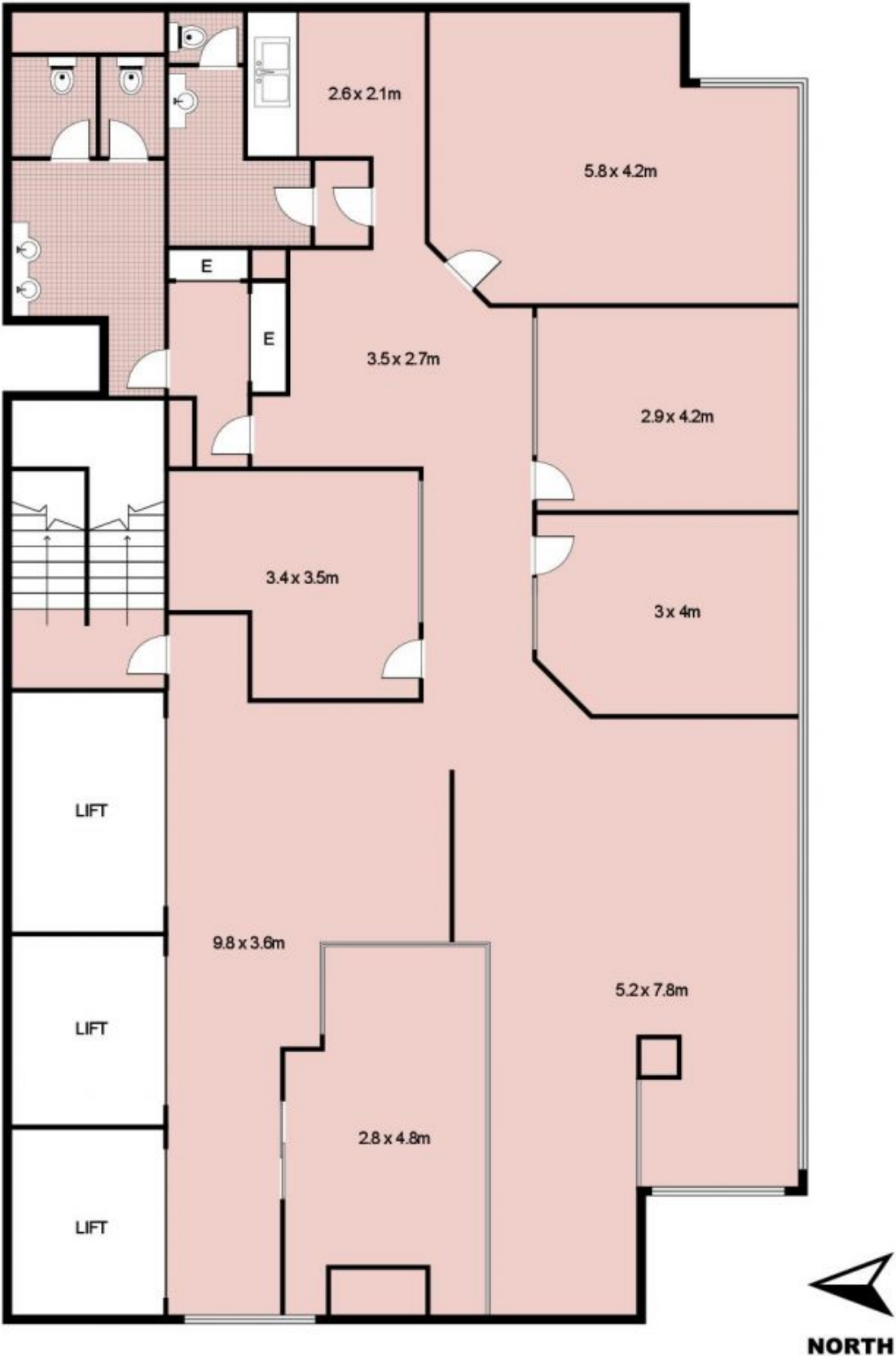
Building Size : 163 sqm

View : <https://www.noonanproperty.com.au/sale/nsw/sydney-city/sydney/commercial/offices/5999209>



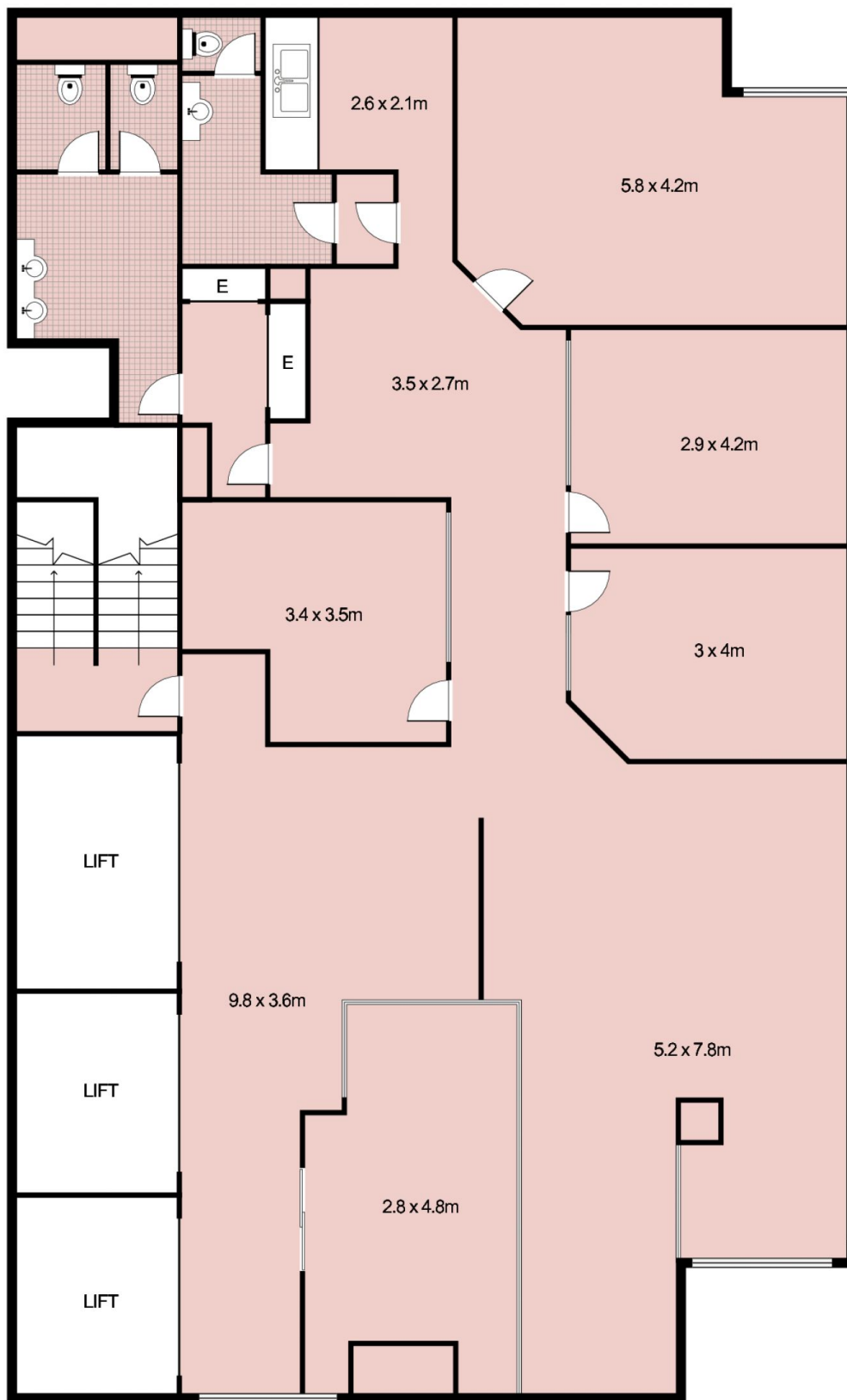
Tim Noonan
02 9231 6000

**Level 12 / 70 Castlereagh Street,
SYDNEY**



This floor plan is intended as a guide only. Layout dimension are approximate only. No representation or warranties of any nature whatsoever are given or intended. Any person using this information should rely on their own enquiries.

Level 12 / 70 Castlereagh Street, SYDNEY



This floor plan is intended as a guide only. Layout dimension are approximate only. No representation or warranties of any nature whatsoever are given or intended. Any person using this information should rely on their own enquiries.