



## 1304/370 Pitt Street Sydney NSW

- Modern and impressive commercial suite
- Expansive views across the CBD skyline
- Highrise positioning and excellent light
- Well designed fitout with glass partitioning
- Open plan workspace plus separate storage
- Impressive reception and meeting room
- High ceilings with halogen down-lighting
- Direct and prominent lift lobby exposure
- Prominent building with striking main lobby
- Four lifts and excellent building services
- Minutes to World Square and Hype Park
- Close to Museum and Town Hall stations
- Exclusive and prestigious CBD address

Size - 92 sqm

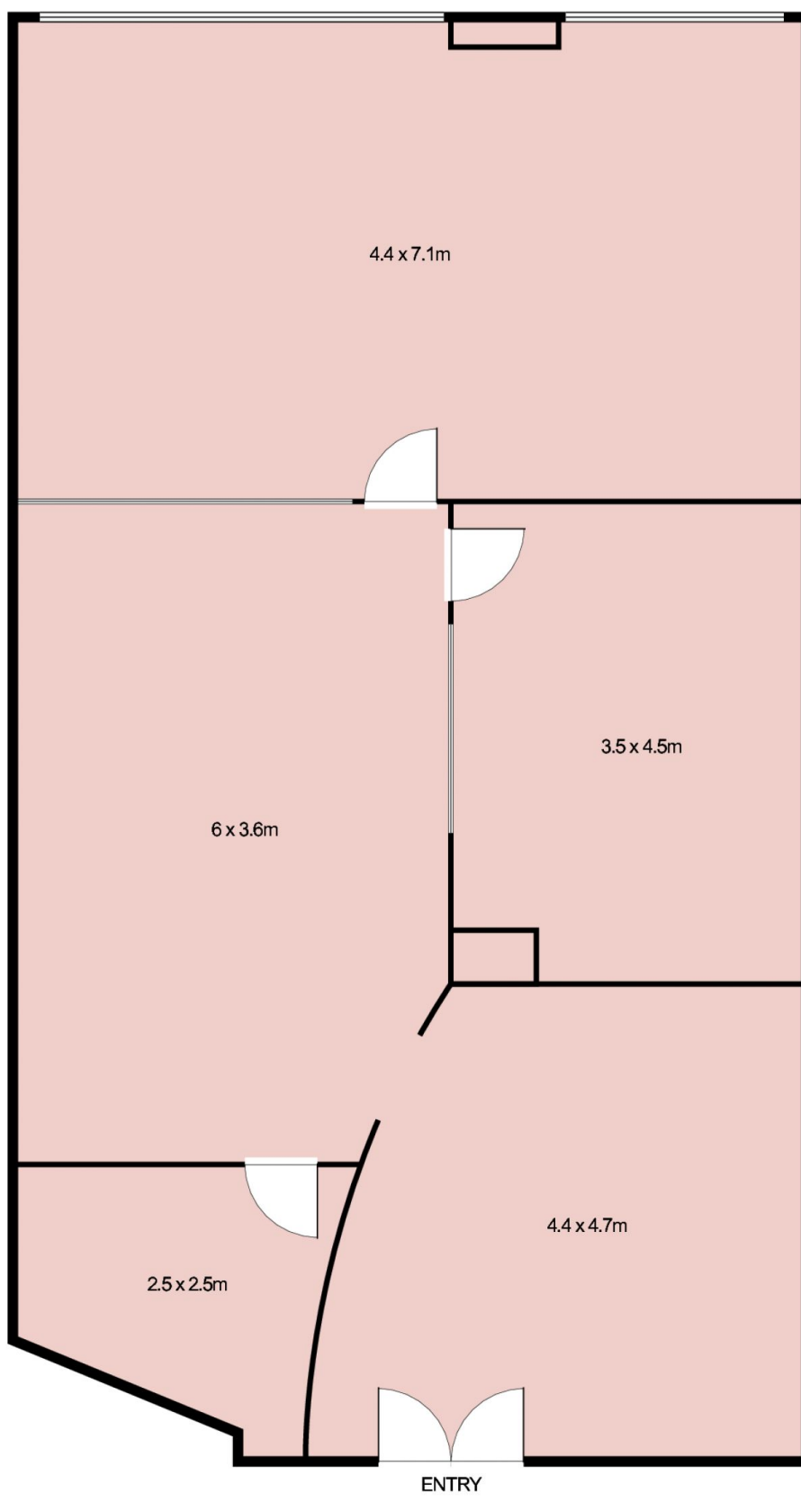
Rental - \$550 per sqm per annum plus GST

**Building Size** : 92 sqm  
**View** : <https://www.noonanproperty.com.au/lease/nsw/sydney-city/sydney/commercial/offices/5999212>



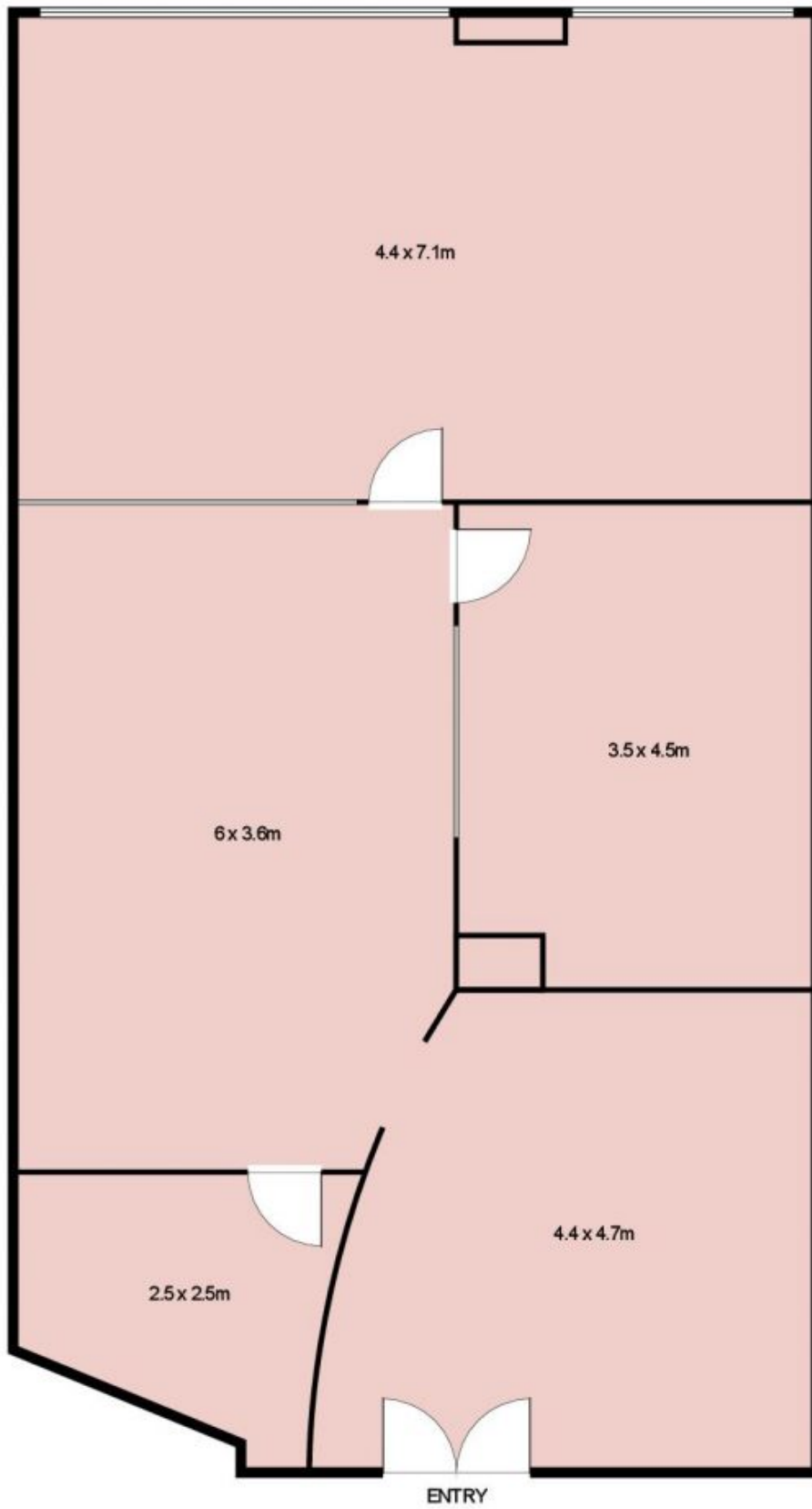
**Tim Noonan**  
**02 9231 6000**

# Suite 1304, 370 Pitt Street, SYDNEY



This floor plan is intended as a guide only. Layout dimension are approximate only. No representation or warranties of any nature whatsoever are given or intended. Any person using this information should rely on their own enquiries.

**Suite 1304, 370 Pitt Street,  
SYDNEY**



This floor plan is intended as a guide only. Layout dimension are approximate only. No representation or warranties of any nature whatsoever are given or intended. Any person using this information should rely on their own enquiries.