



803/229 Macquarie Street Sydney NSW

- Superbly renovated professional suite
- East facing with excellent natural light
- Spectacular views of Sydney Harbour
- Stylishly renovated with modern interiors
- Impressive reception and waiting area
- Mixture of offices or consultation rooms
- Internal kitchen and several wet areas
- Self-controlled ducted air conditioning
- Popular commercial building with two lifts
- Superb CBD location near Martin Place
- Minutes to Wynyard and Circular Quay
- Close to Hyde Park and St James Station
- Opposite Sydney Hospital and Parliament House
- Handy to Supreme Court and Queen's Square
- Multiple car parking options nearby
- Exclusive and prestigious CBD address

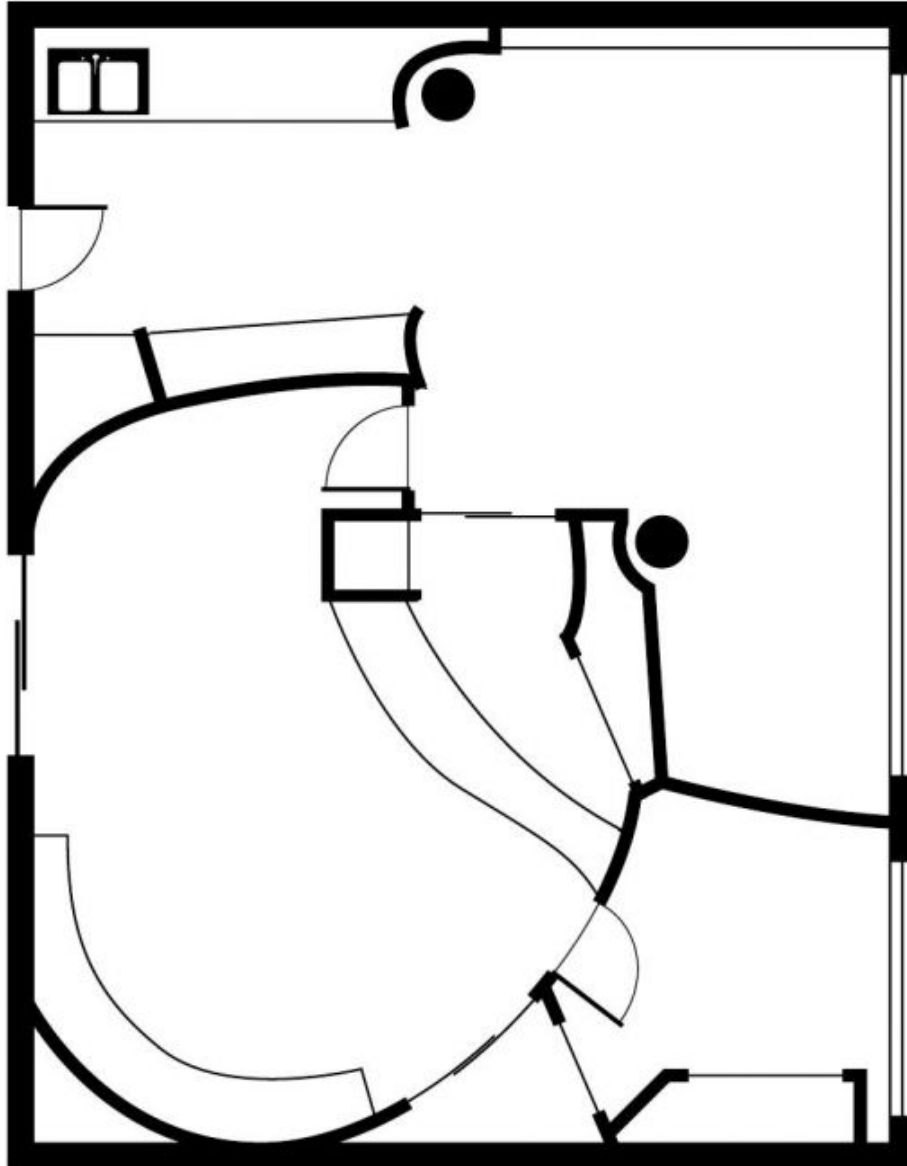
Building Size : 53 sqm

View : <https://www.noonanproperty.com.au/lease/nsw/sydney-city/sydney/commercial/offices/5999216>



Tim Noonan
02 9231 6000

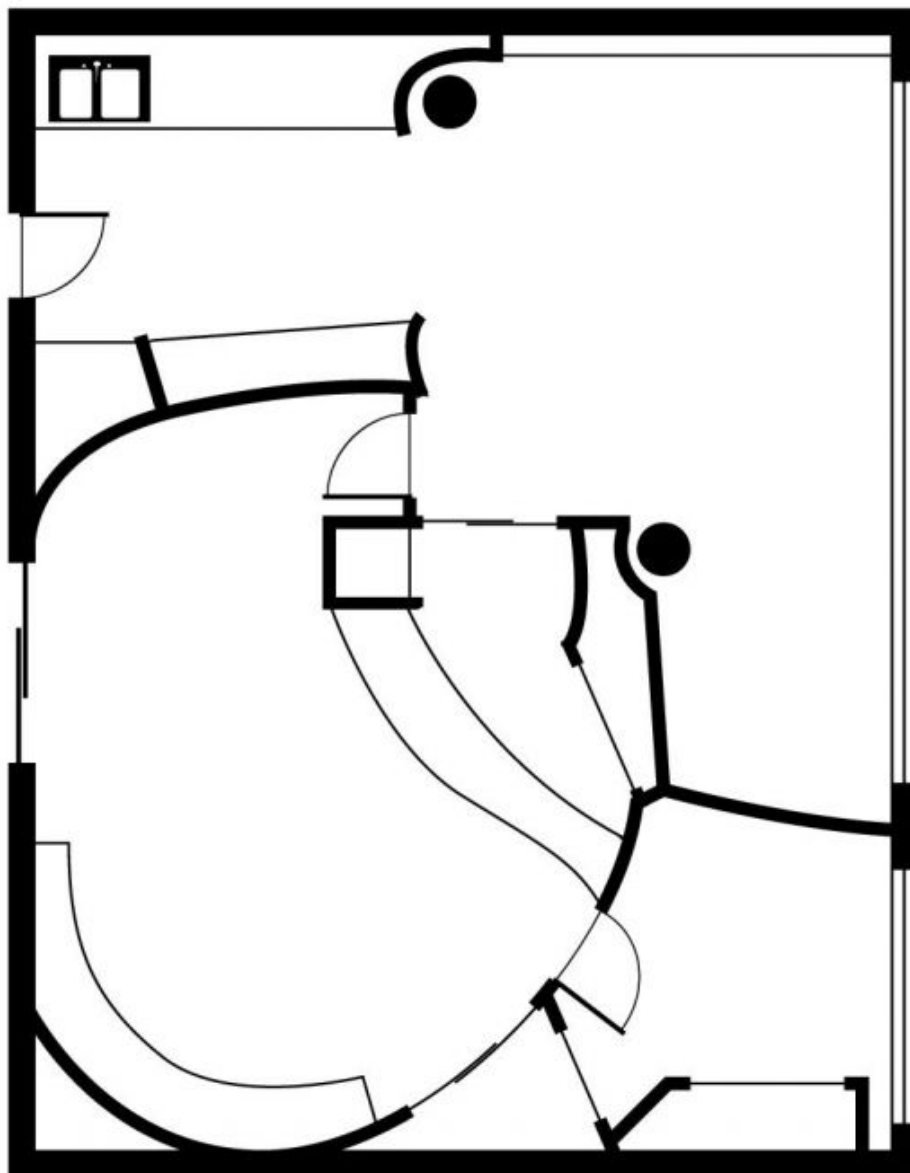
**Suite 803/229-231 Macquarie Street,
SYDNEY**



Plans by
surroundpix
com.au
1300 30 32 40

This floor plan is intended as a guide only. Layout dimensions are approximate only. No representations or warranties of any nature whatsoever are given or intended. Any person using this information should rely on their own enquiries

**Suite 803/229-231 Macquarie Street,
SYDNEY**



Plans by
surroundpix
com.au
1300 30 32 40

This floor plan is intended as a guide only. Layout dimensions are approximate only. No representations or warranties of any nature whatsoever are given or intended. Any person using this information should rely on their own enquiries