



504/65 York Street Sydney NSW

- Highly impressive commercial suite
- Professional and efficient work space
- High ceilings and excellent natural light
- Large windows overlooking York Street
- Direct and prominent lift lobby exposure
- On floor kitchen and bathroom facilities
- Prominent and iconic Art Deco building
- Imposing main lobby with three lifts
- Prime location near Wynyard Station
- Corner of Barrack and York Streets
- Close to Circular Quay and Martin Place
- Gateway positioning for Barangaroo
- Surrounded by popular cafes and bars
- Multiple car parking options nearby

Building Size : 64 sqm

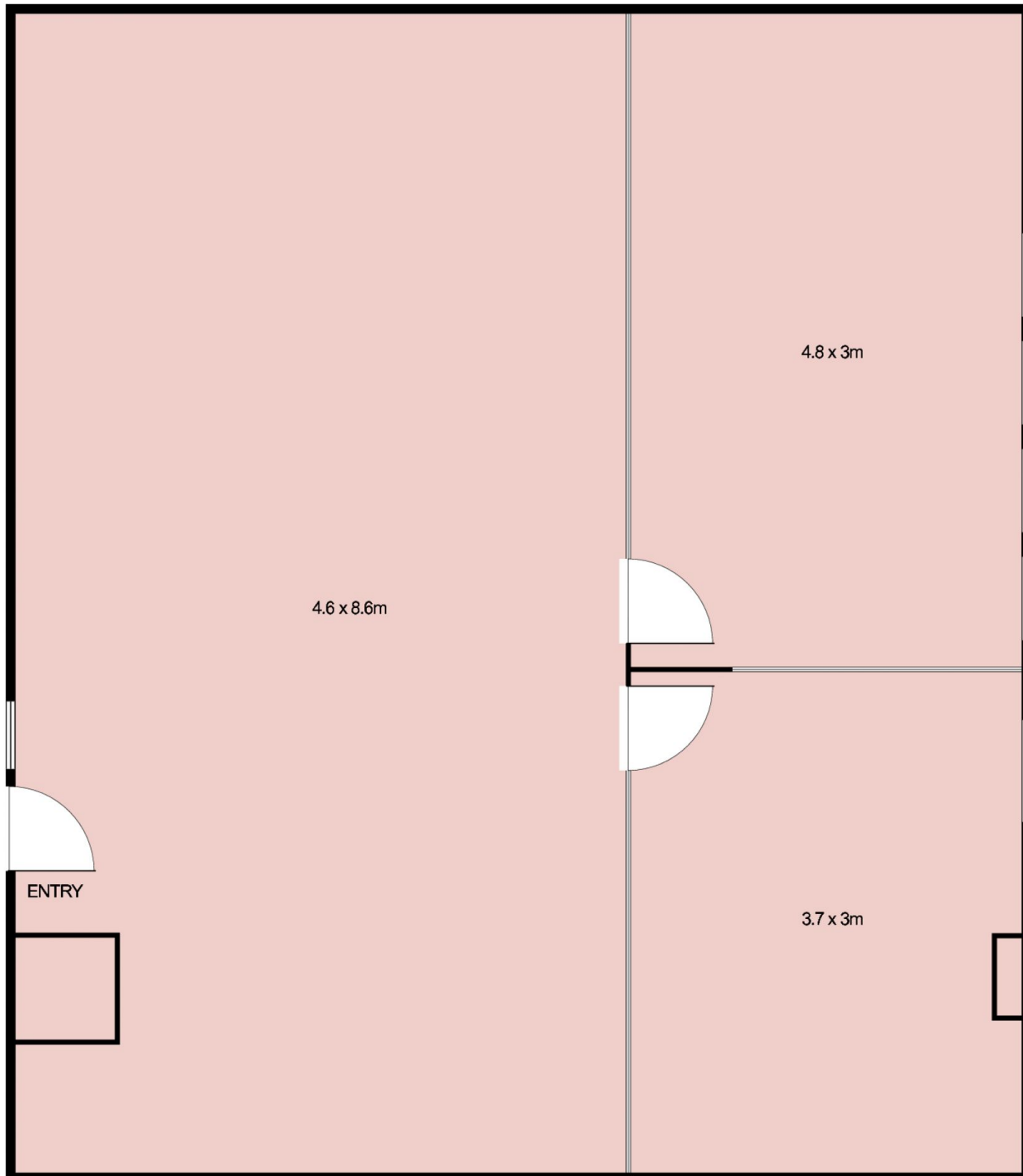
View : <https://www.noonanproperty.com.au/lease/nsw/sydney-city/sydney/commercial/offices/5999222>



Tim Noonan
02 9231 6000

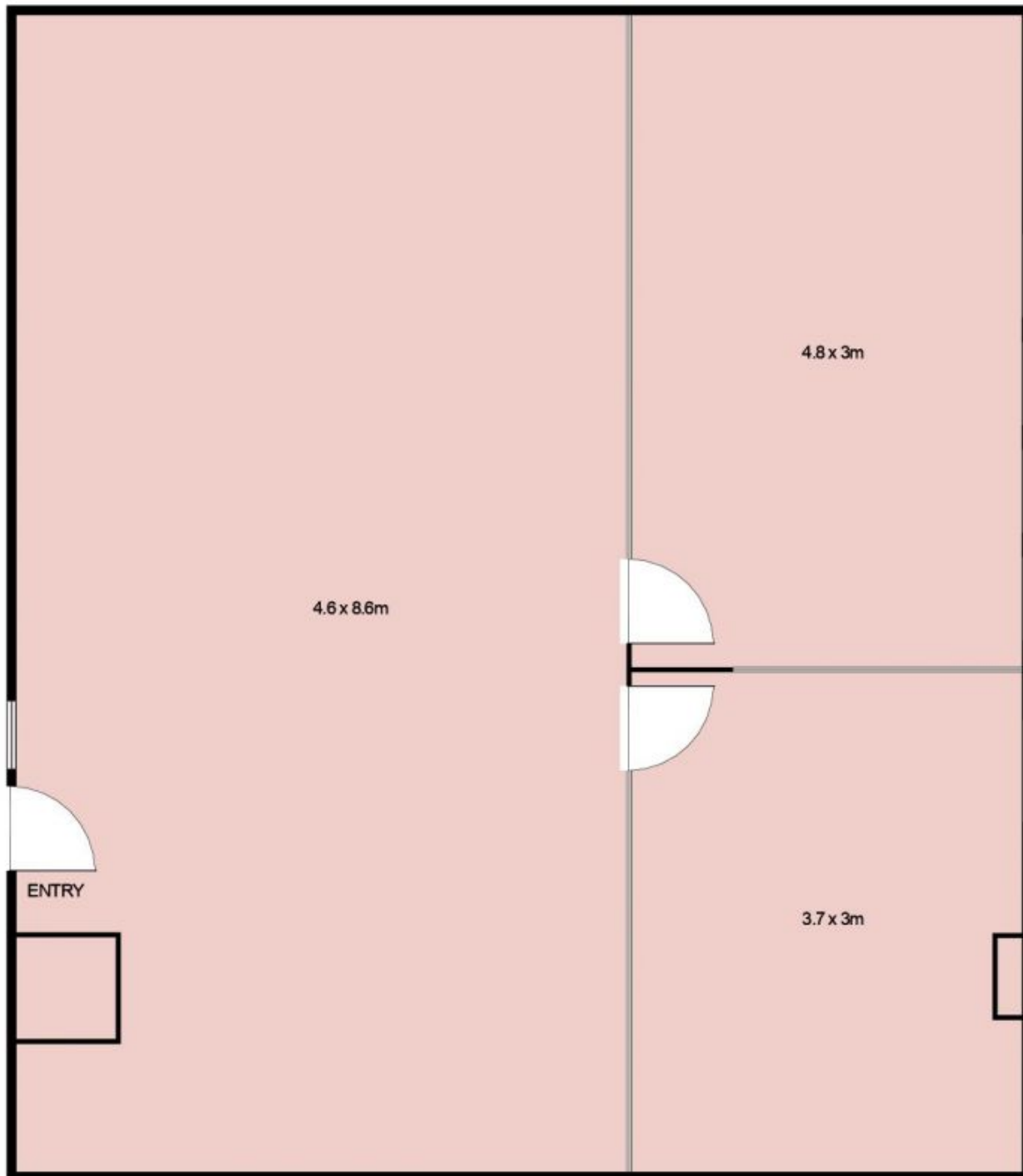
Size - 64 sqm approx

Suite 504, 65 York Street, SYDNEY



This floor plan is intended as a guide only. Layout dimension are approximate only. No representation or warranties of any nature whatsoever are given or intended. Any person using this information should rely on their own enquiries.

**Suite 504, 65 York Street,
SYDNEY**



This floor plan is intended as a guide only. Layout dimension are approximate only. No representation or warranties of any nature whatsoever are given or intended. Any person using this information should rely on their own enquiries.