

## 308/155 King Street Sydney NSW

- Prestigious commercial or professional suite
- Immaculately presented with elegant finishes
- Large windows providing plenty of natural light
- High ceilings with pendant lighting throughout
- Mixture of executive offices or consulting rooms
- Easily sub dividable with two entrance points
- Excellent aspect overlooking Castlereagh Street
- Iconic CBD building with classic Heritage features
- Imposing main lobby area with stately finishes
- Excellent building services including three lifts
- Envious positioning on Sydney's 'Rodeo Drive'
- Surrounded by billions of new CBD development
- Close to Circular Quay, Wynyard and Martin Place
- Minutes to Queen's Square and Hyde Park
- Blue ribbon location opposite the MLC Centre
- Quality opportunity for investors and occupiers

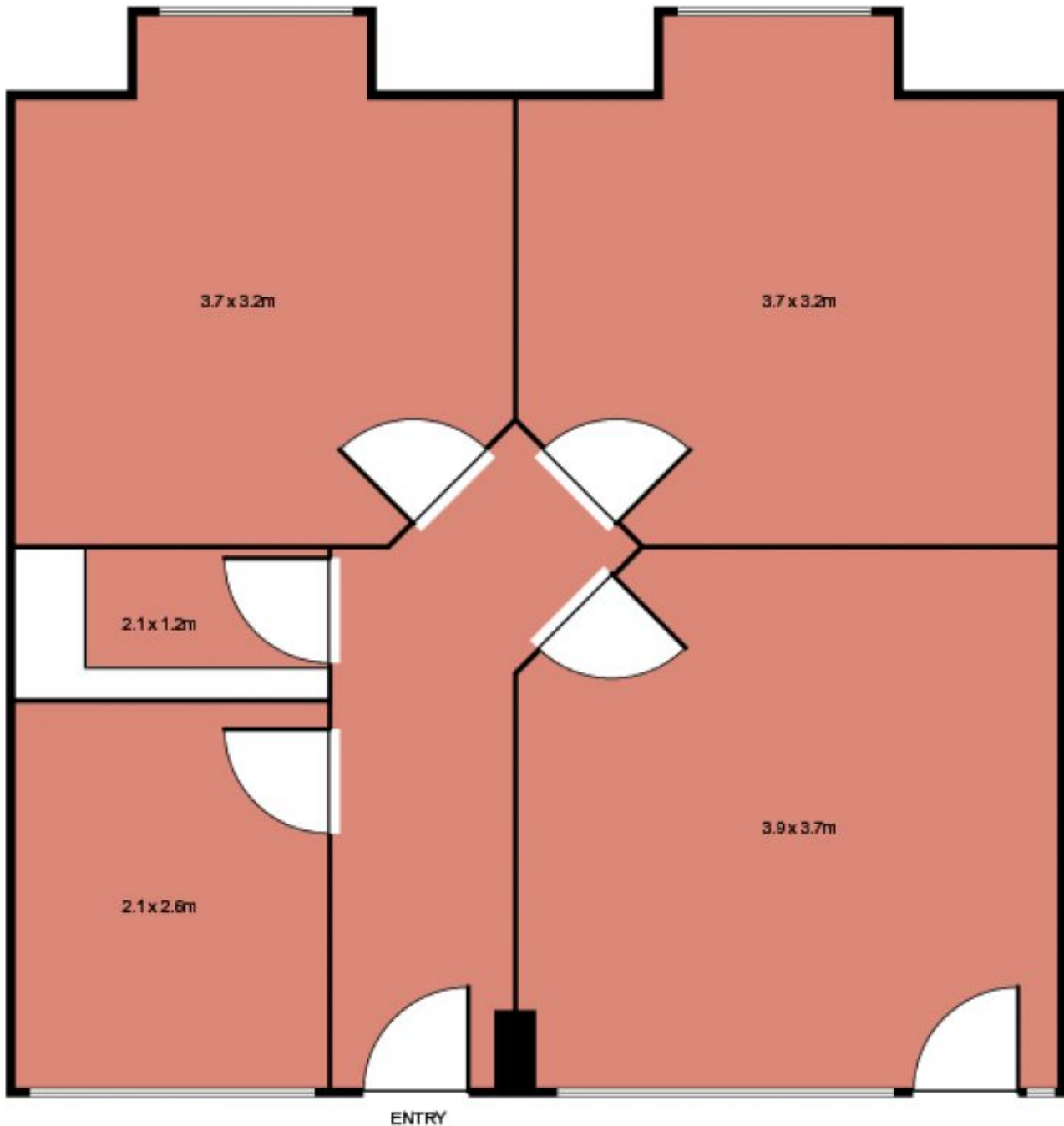
**Building Size** : 55 sqm

**View** : <https://www.noonanproperty.com.au/sale/nsw/sydney-city/sydney/commercial/offices/5999223>



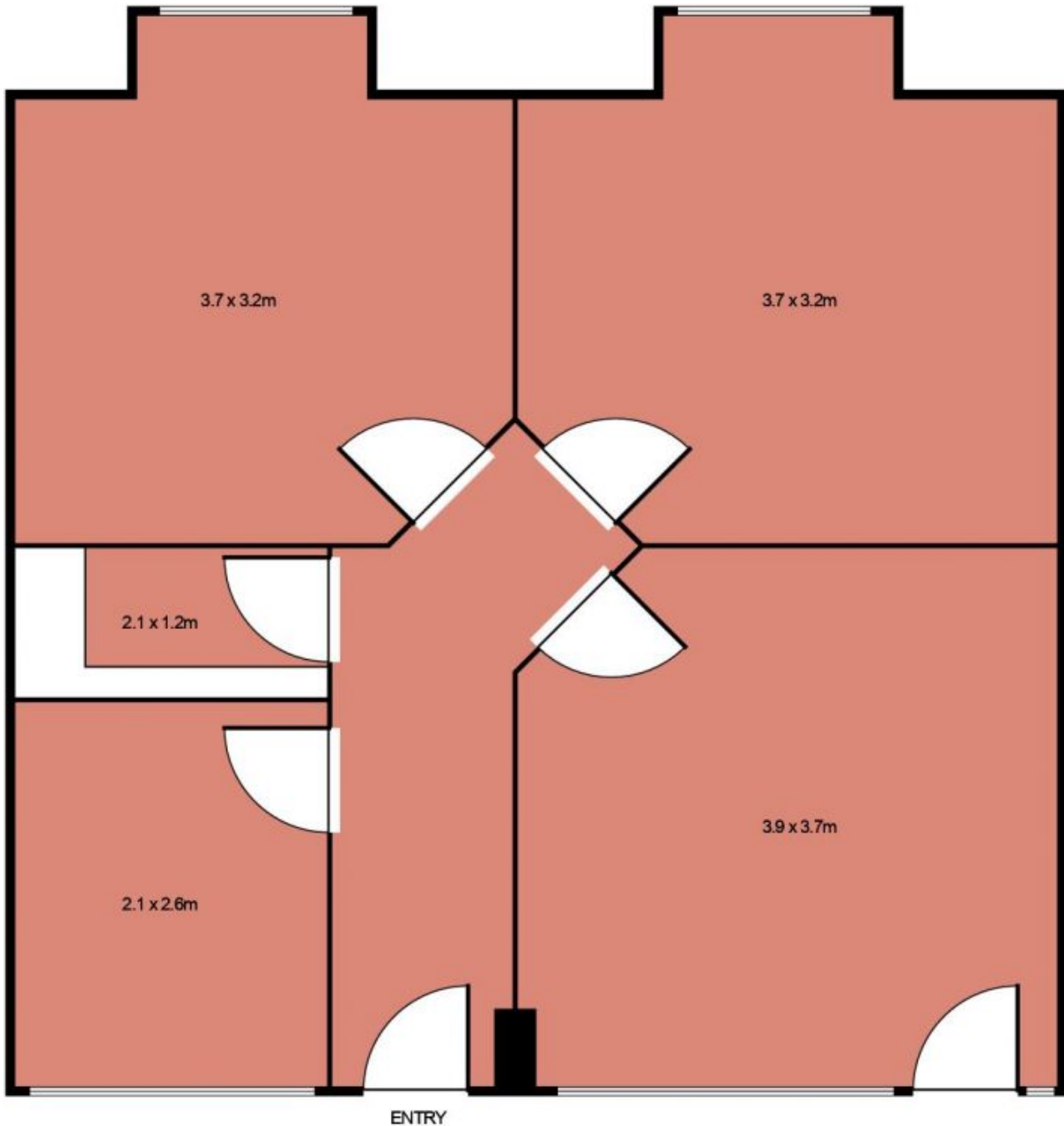
**Tim Noonan**  
02 9231 6000

**308/155 King Street,  
SYDNEY**



This floor plan is intended as a guide only. Layout dimension are approximate only. No representation or warranties of any nature whatsoever are given or intended. Any person using this information should rely on their own enquiries.

**308/155 King Street,  
SYDNEY**



ENTRY



**NORTH**

This floor plan is intended as a guide only. Layout dimension are approximate only. No representation or warranties of any nature whatsoever are given or intended. Any person using this information should rely on their own enquiries.