



1012/229 Macquarie Street Sydney NSW

- Boutique commercial or professional suite
- Penthouse positioning and high ceilings
- Large windows and good natural light
- Well presented with modern interiors
- Attractive reception and waiting room
- Internal kitchen with integrated storage
- Adaptable floor plan and efficient layout
- Popular and prominent commercial building
- Quality building services including two lifts
- Blue Ribbon location near Martin Place
- Close to Hyde Park and St James Station
- Exclusive and prestigious CBD address
- Surrounded by popular cafes and bars
- Multiple car parking options nearby

Building Size : 20 sqm

View : <https://www.noonanproperty.com.au/sale/nsw/sydney-city/sydney/commercial/offices/5999224>

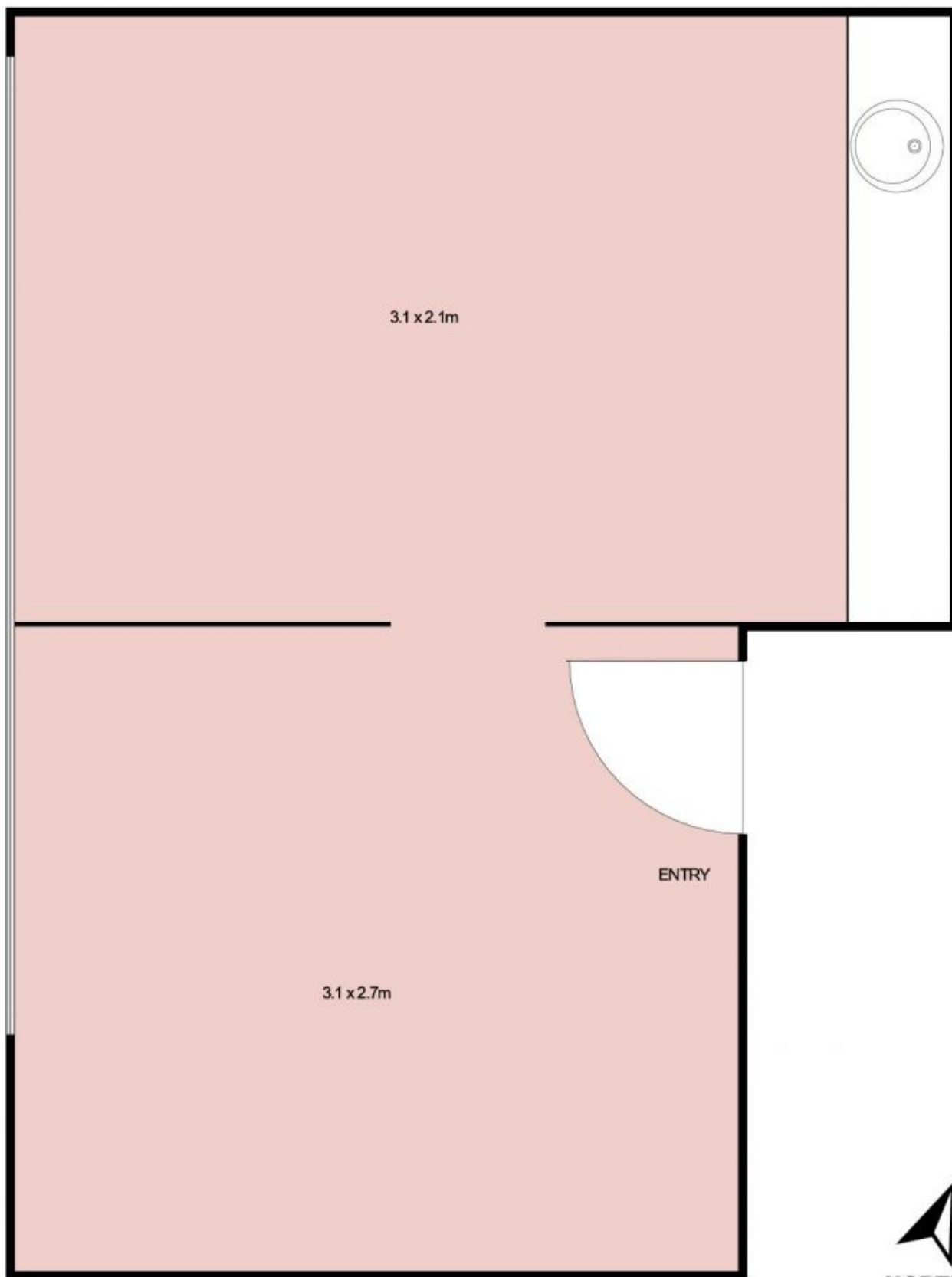


Tim Noonan
02 9231 6000

LOT DETAILS AND SIZE

Suite 1012, Lot 80 - 20 sqm approx.

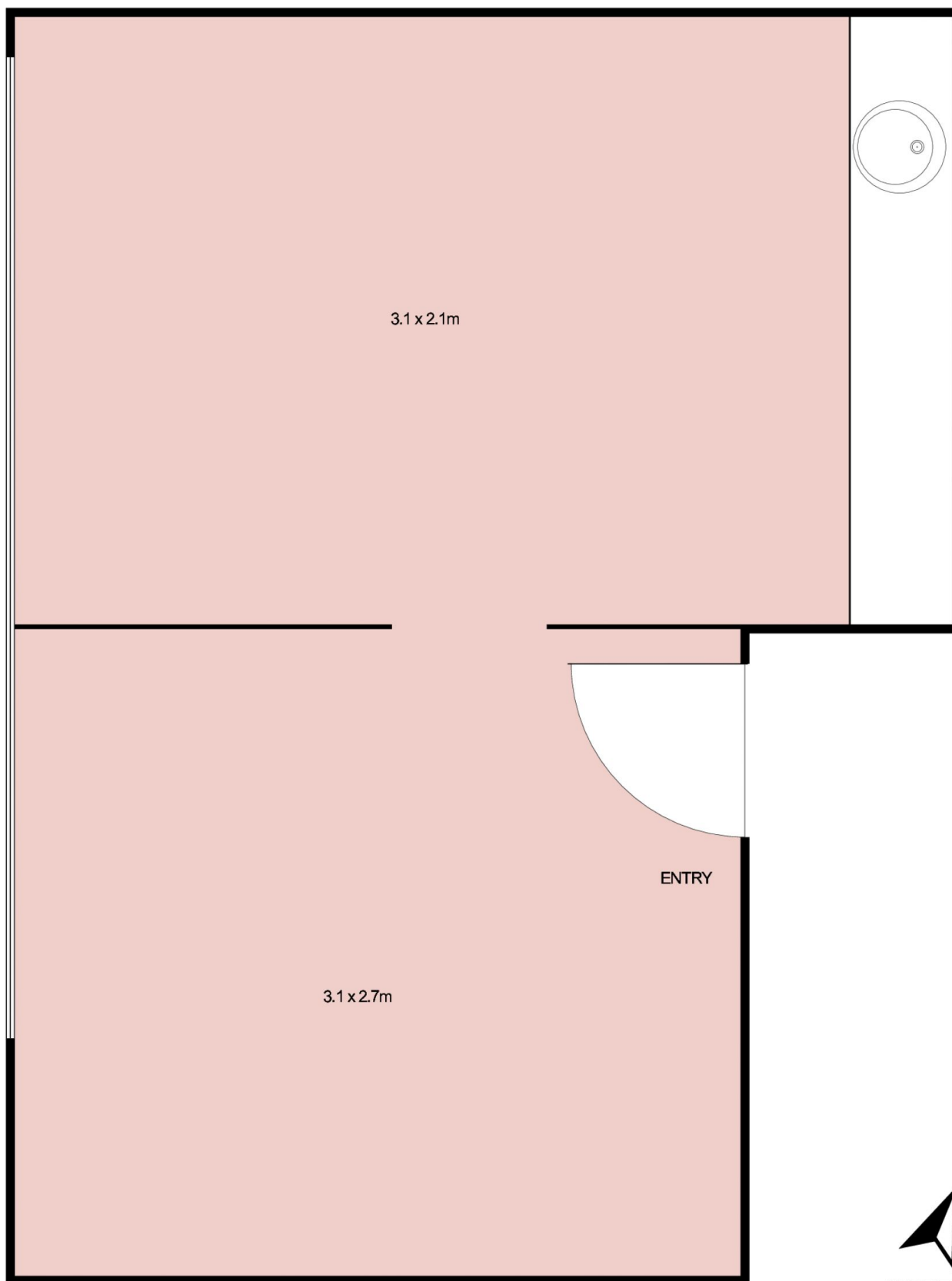
**Suite 1012, Level 10, 229 Macquarie Street,
SYDNEY**



This floor plan is intended as a guide only. Layout dimension are approximate only. No representation or warranties of any nature whatsoever are given or intended. Any person using this information should rely on their own enquiries.



Suite 1012, Level 10, 229 Macquarie Street, SYDNEY



This floor plan is intended as a guide only. Layout dimension are approximate only. No representation or warranties of any nature whatsoever are given or intended. Any person using this information should rely on their own enquiries.



NORTH