



202/234 George Street Sydney NSW

Noonan Property has been exclusively appointed to offer for sale Suite 202, 234 George Street, Sydney.

- Premium commercial suite in enviable location
- Impressive, efficient and inspired work space
- Prime positioning in an acclaimed CBD building
- Large windows providing excellent natural light
- Expansive views overlooking George Street
- High quality fitout with custom joinery included
- Mixture of offices and open plan work spaces
- Arguably Sydney's best commercial strata building
- Striking main lobby area with high spec finishes
- Excellent building services and low Outgoings
- Landmark location in Sydney's core financial hub
- Close to Wynyard, Circular Quay and Barangaroo
- Minutes to Royal Botanic Gardens and Martin Place
- Direct access to the remodeled George Street and Light

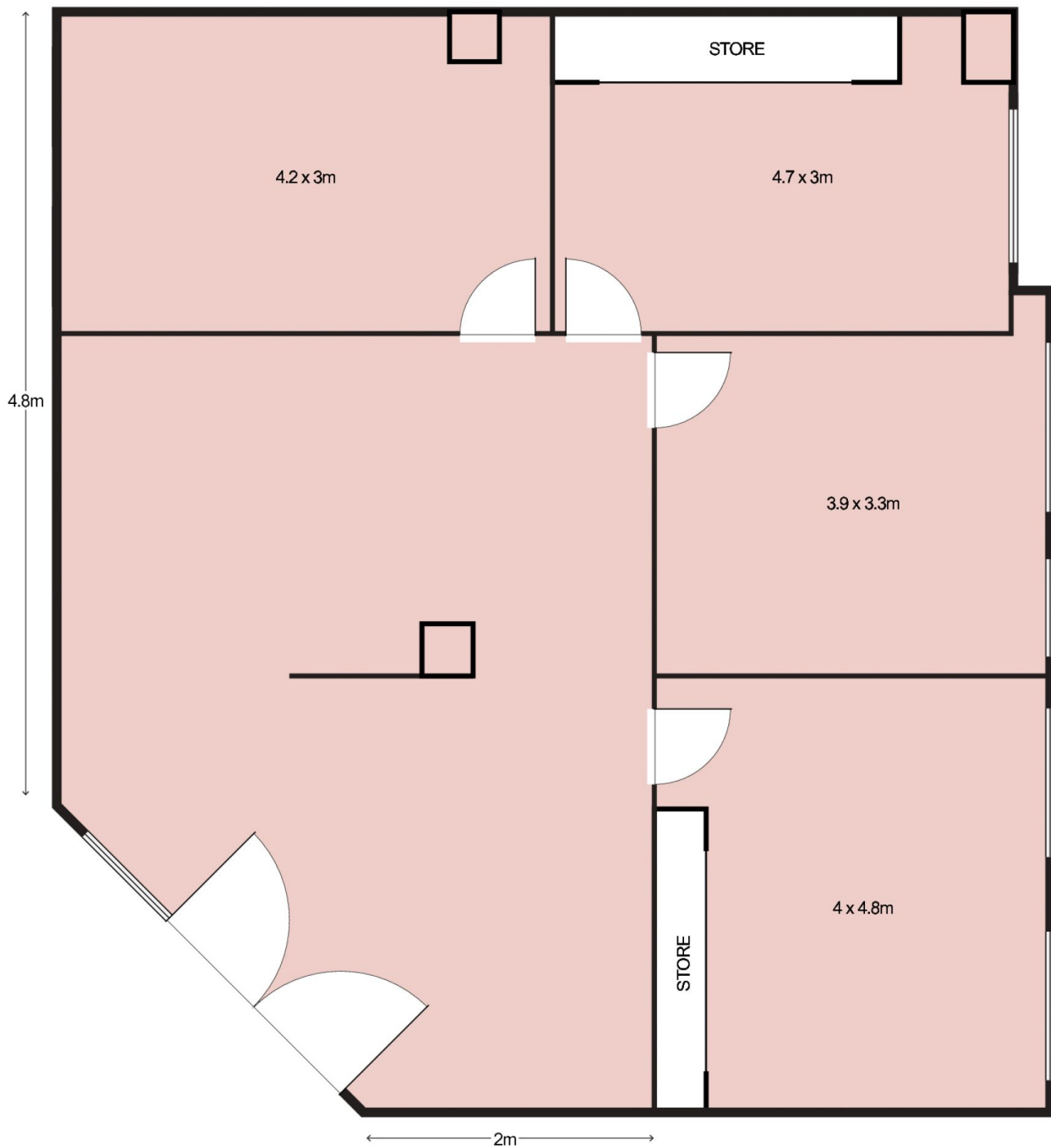
Building Size : 95 sqm

View : <https://www.noonanproperty.com.au/sale/nsw/sydney-city/sydney/commercial/offices/5999226>



Tim Noonan
02 9231 6000

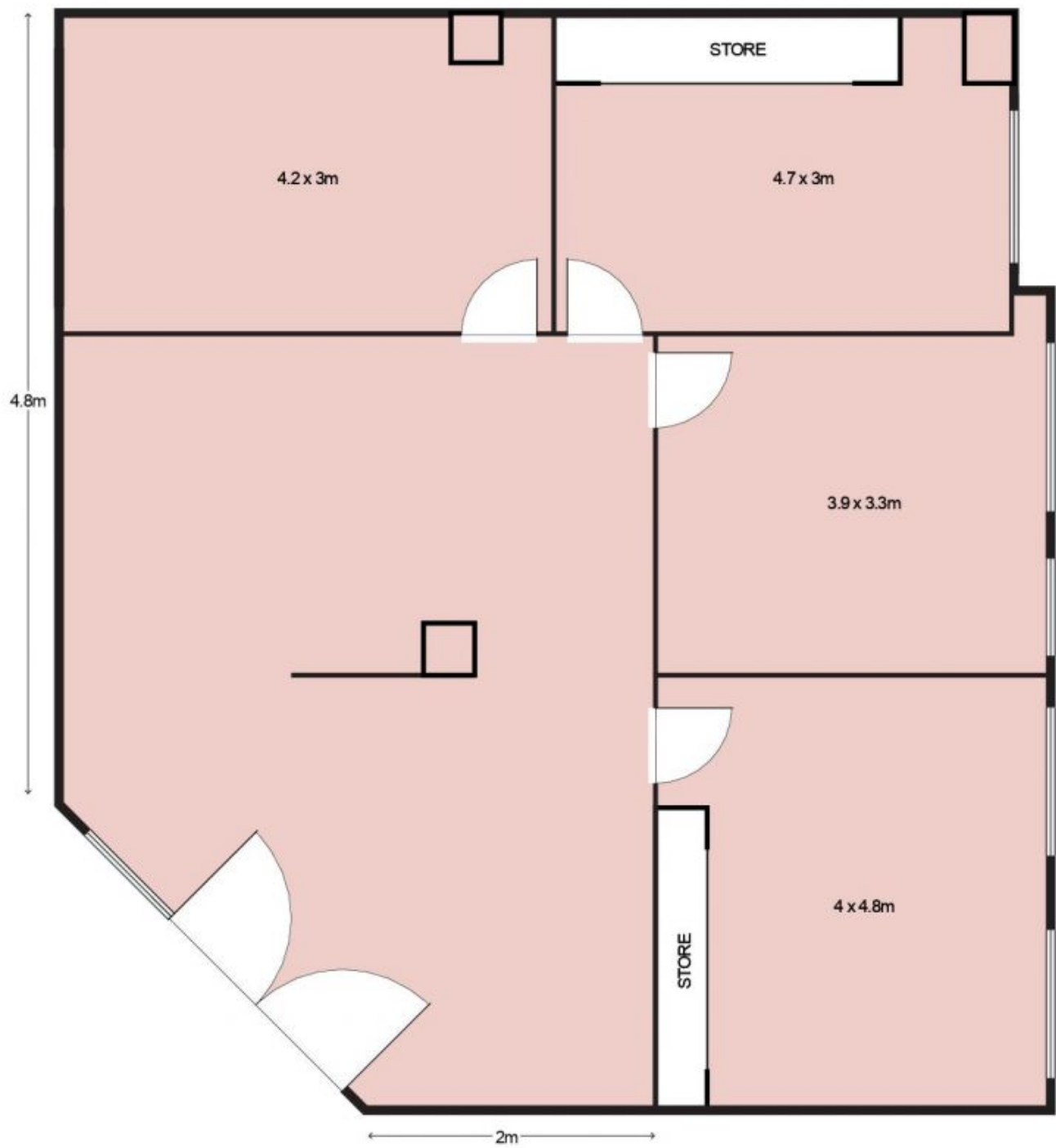
Suite 202/234 George Street, SYDNEY



NORTH

This floor plan is intended as a guide only. Layout dimension are approximate only. No representation or warranties of any nature whatsoever are given or intended. Any person using this information should rely on their own enquiries.

Suite 202/234 George Street,
SYDNEY



NORTH

This floor plan is intended as a guide only. Layout dimension are approximate only. No representation or warranties of any nature whatsoever are given or intended. Any person using this information should rely on their own enquiries.