



## 67 Castlereagh Street Sydney NSW

Noonan Property has been exclusively appointed to offer for sale The Penthouse, Culwulla Chambers, 67 Castlereagh Street, Sydney .

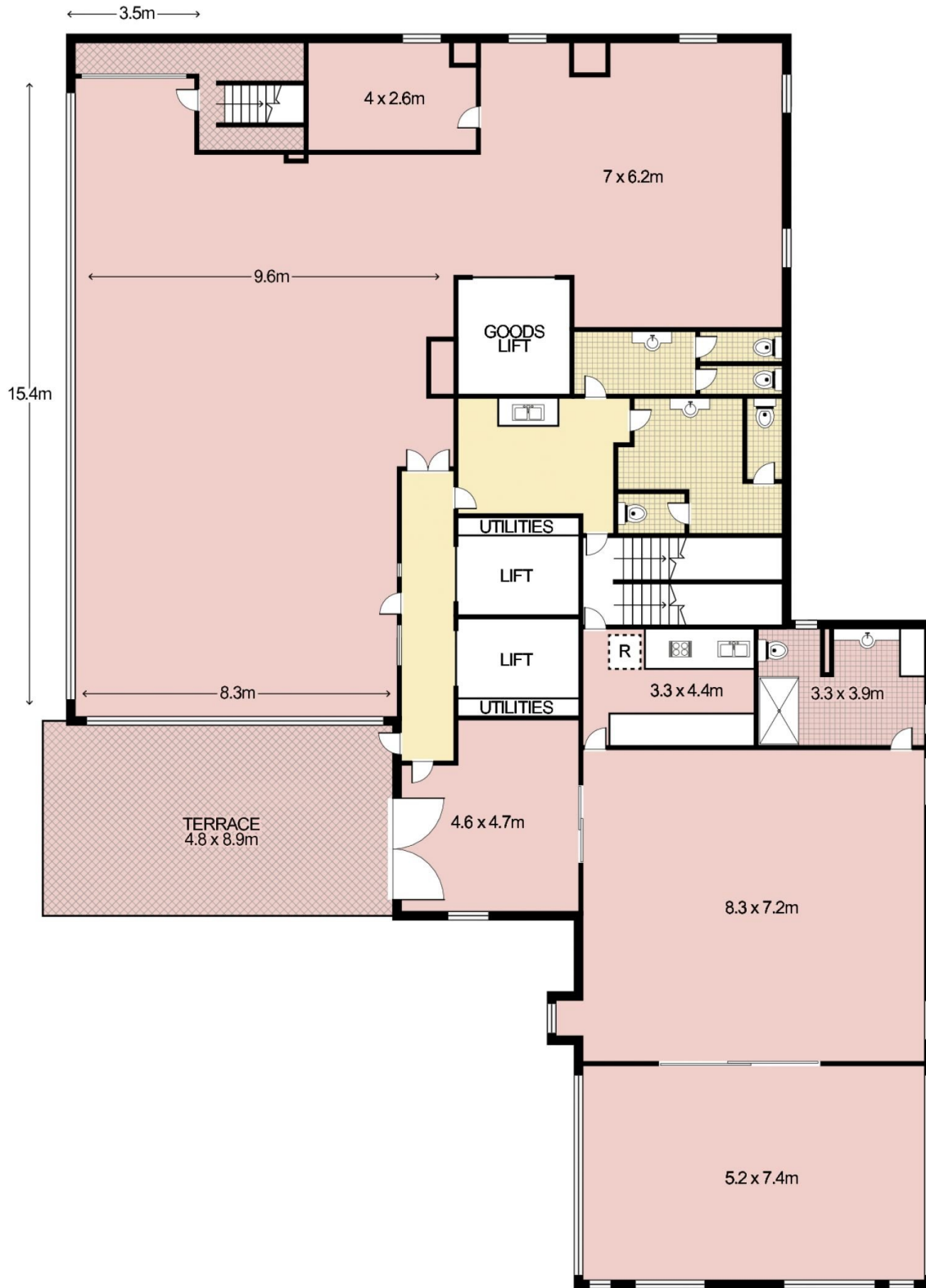
- Commercial whole floor of unrivalled quality
- The Jewel in the Crown of Castlereagh Street
- Prestigious, sophisticated and distinguished
- Penthouse positioning with CBD skyline views
- Unique and exquisite atrium glass windows
- Glasshouse ceilings flooded with natural light
- Four expansive full-height window frontages
- Ultra high ceilings maximizing light and space
- Timber floors and spot lighting throughout
- Interconnecting terrace perfect for entertaining
- Views overlooking King and Castlereagh Streets
- Full kitchen, bathroom and shower facilities
- Two separate titles providing excellent versatility

**Building Size** : 380 sqm  
**View** : <https://www.noonanproperty.com.au/sale/nsw/sydney-city/sydney/commercial/offices/5999228>



**Tim Noonan**  
**02 9231 6000**

# Level 12, 67 Castlereagh Street, SYDNEY



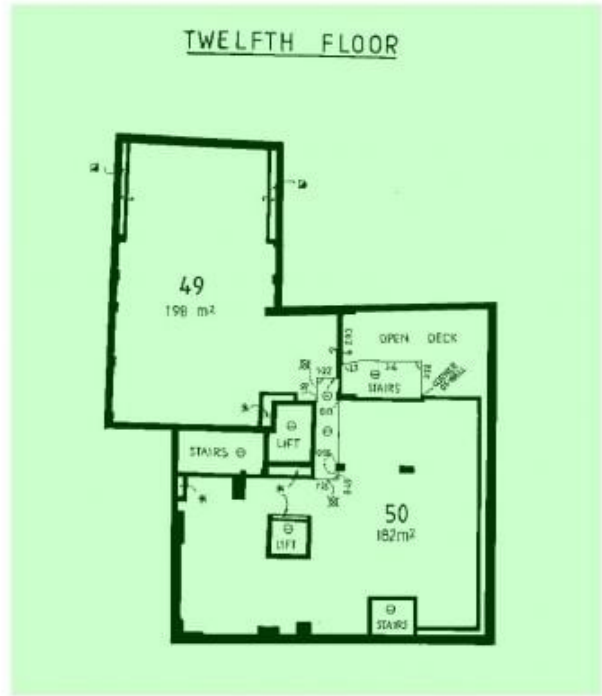
This floor plan is intended as a guide only. Layout dimension are approximate only. No representation or warranties of any nature whatsoever are given or intended. Any person using this information should rely on their own enquiries.

ELEVENTH FLOOR



- ⊙ DENOTES CORNER OF WALL
- DENOTES LINE OF FACE OF WALL PRODUCED
- DENOTES OPEN DECK
- AREAS ARE APPROXIMATE ONLY
- ★ DENOTES SERVICE DUCT (COMMON PROPERTY)
- ⊕ DENOTES COMMON PROPERTY
- ⊥ DENOTES 90°
- THE OPEN DECKS UNLIMITED IN HEIGHT TO 5 ABOVE THEIR UPPER CONCRETE SURFACE.

TWELFTH FLOOR



Reduction Ratio 1: 200

Lengths are in metres

*J. H. Little*  
Registered Surveyor

Deputy Mayor - Council Clerk

SURVEYOR'S REFERENCE: 4134

Req: B462342 / Doc: SP 0021574 P / Rev: 26-Sep-2008 / Sts: SC, OK / Pgs: ALL / Dtd: 23-Oct-2018 12:22 / Seq: 8 of 8  
Ref: Esau Noonan Property, com.au / Sec: 8

OFFICE USE ONLY

6/6 10 11/215 90