

## 1002/67 Castlereagh Street Sydney NSW

- Spectacular commercial suite of unrivalled quality
- Prominent, distinguished and inspired workspace
- Highly coveted CBD location near Martin Place
- Meticulously renovated with refined interiors
- High exposed ceilings maximising light and space
- Expansive window frontages and excellent light
- Views overlooking King and Castlereagh Streets
- Exceptional fitout included with bespoke finishes
- European timbers and spot lighting throughout
- Mixture of exec office and open plan workspaces
- Two ultra-impressive client meeting/boardrooms
- On floor kitchen, bathroom and shower facilities
- Iconic CBD building with classic Heritage features
- Striking main lobby area with stately finishes
- Blue ribbon location opposite the MLC Centre
- Handy to Pitt Street Mall and St James Station
- Minutes to Queen's Square and Hyde Park

**Building Size** : 200 sqm

**View** : <https://www.noonanproperty.com.au/lease/nsw/sydney-city/sydney/commercial/offices/5999233>



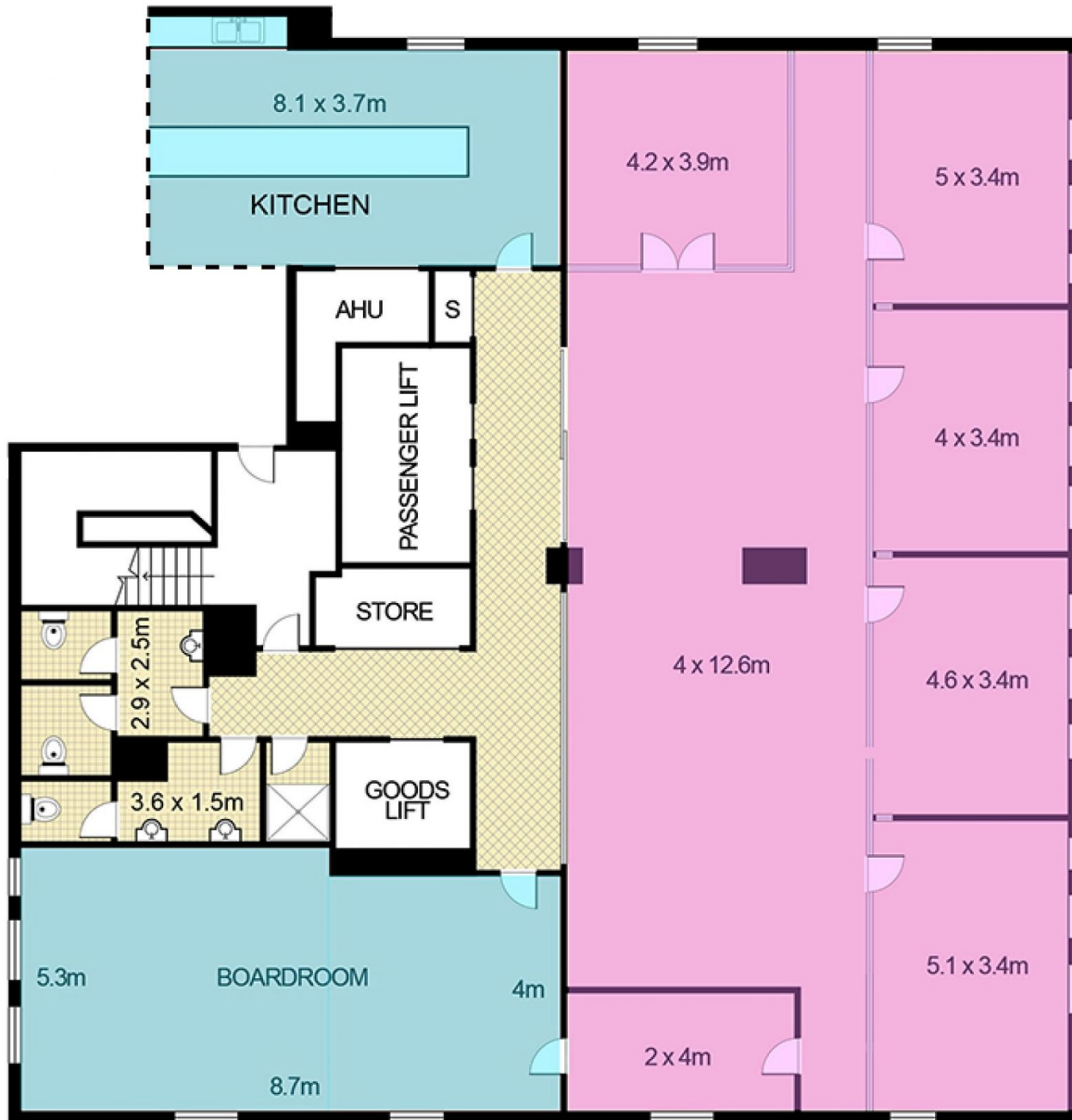
**Tim Noonan**  
**02 9231 6000**

## Part Level 10, 67 Castlereagh Street, Sydney



This floor plan is intended as a guide only. Layout dimension are approximate only. No representation or warranties of any nature whatsoever are given or intended. Any person using this information should rely on their own enquiries.

## Part Level 10, 67 Castlereagh Street, Sydney



This floor plan is intended as a guide only. Layout dimension are approximate only. No representation or warranties of any nature whatsoever are given or intended. Any person using this information should rely on their own enquiries.