



2/185 Gloucester Street Sydney NSW

Noonan Property has been exclusively appointed to offer for sale Suite 2, Reynell Terraces, 185 Gloucester Street, Sydney.

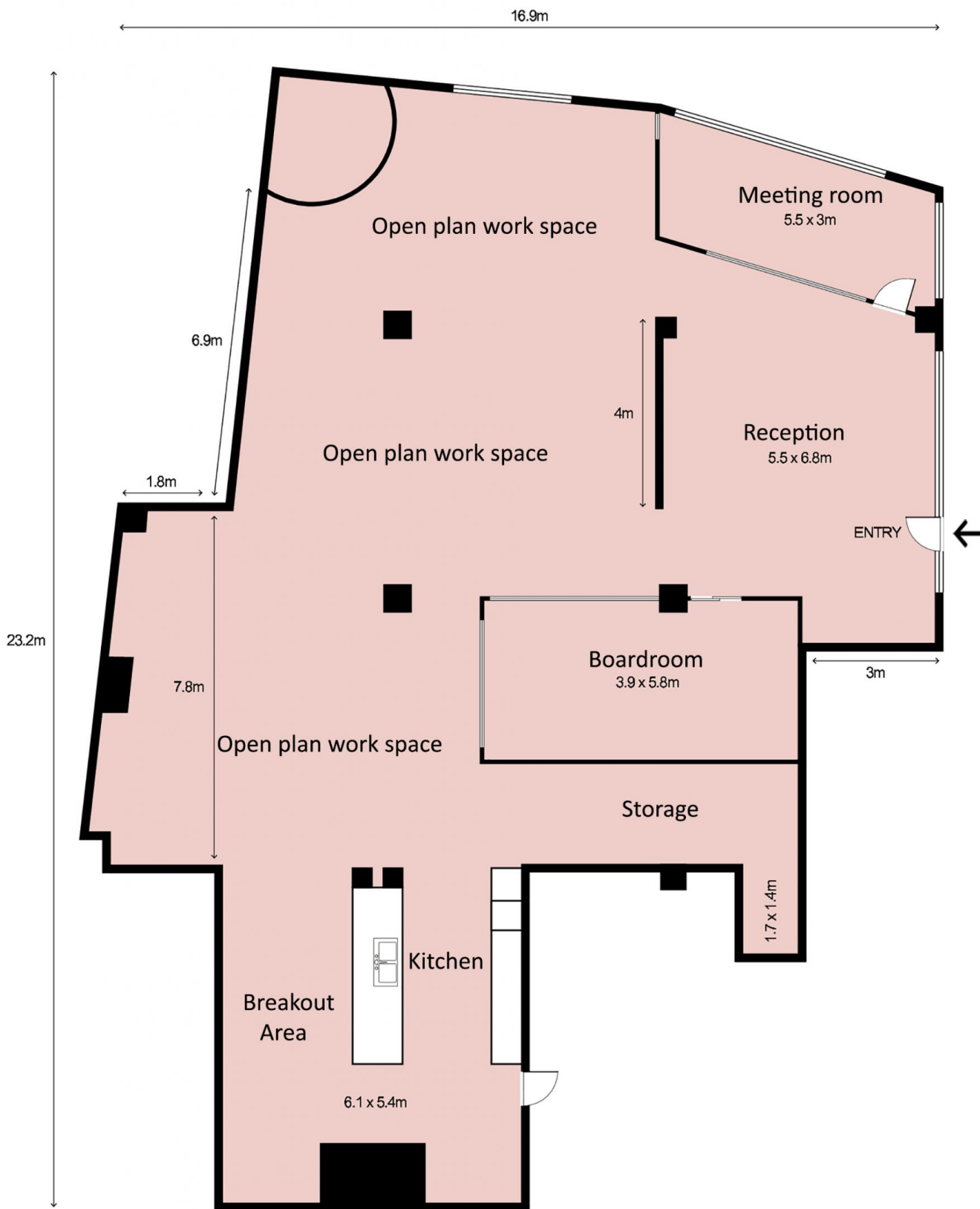
- Stylish commercial suite of unrivalled quality
- Vibrant, distinguished and inspired work space
- Classic New York warehouse style features
- Ultra high ceilings maximising light and space
- Exposed services and ceiling beams throughout
- Large windows with attractive tree line views
- Polished concrete floors and pendant lighting
- Quality fitout included with refined finishes *
- Imposing main reception with bespoke joinery
- Two highly impressive meeting/client rooms
- All meeting rooms with audio visual display
- Full kitchen, bathroom and shower facilities
- Integrated storage and large break out space

Building Size : 287 sqm
View : <https://www.noonanproperty.com.au/sale/nsw/sydney-city/sydney/commercial/offices/5999234>



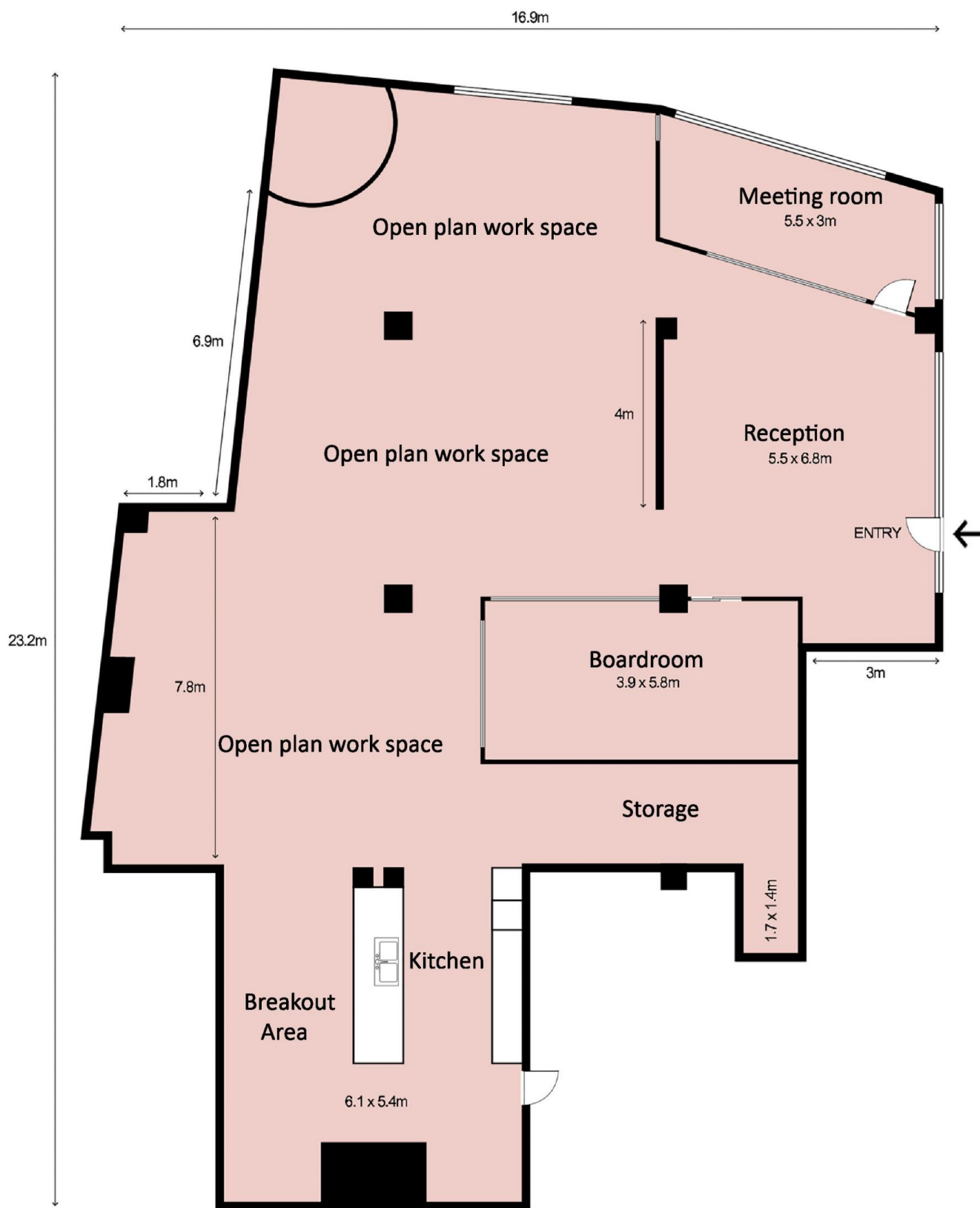
Tim Noonan
02 9231 6000

2/185 Gloucester Street, THE ROCKS



This floor plan is intended as a guide only. Layout dimension are approximate only. No representation or warranties of any nature whatsoever are given or intended. Any person using this information should rely on their own enquiries.

2/185 Gloucester Street, THE ROCKS



This floor plan is intended as a guide only. Layout dimension are approximate only. No representation or warranties of any nature whatsoever are given or intended. Any person using this information should rely on their own enquiries.