



605/229 Macquarie Street Sydney NSW

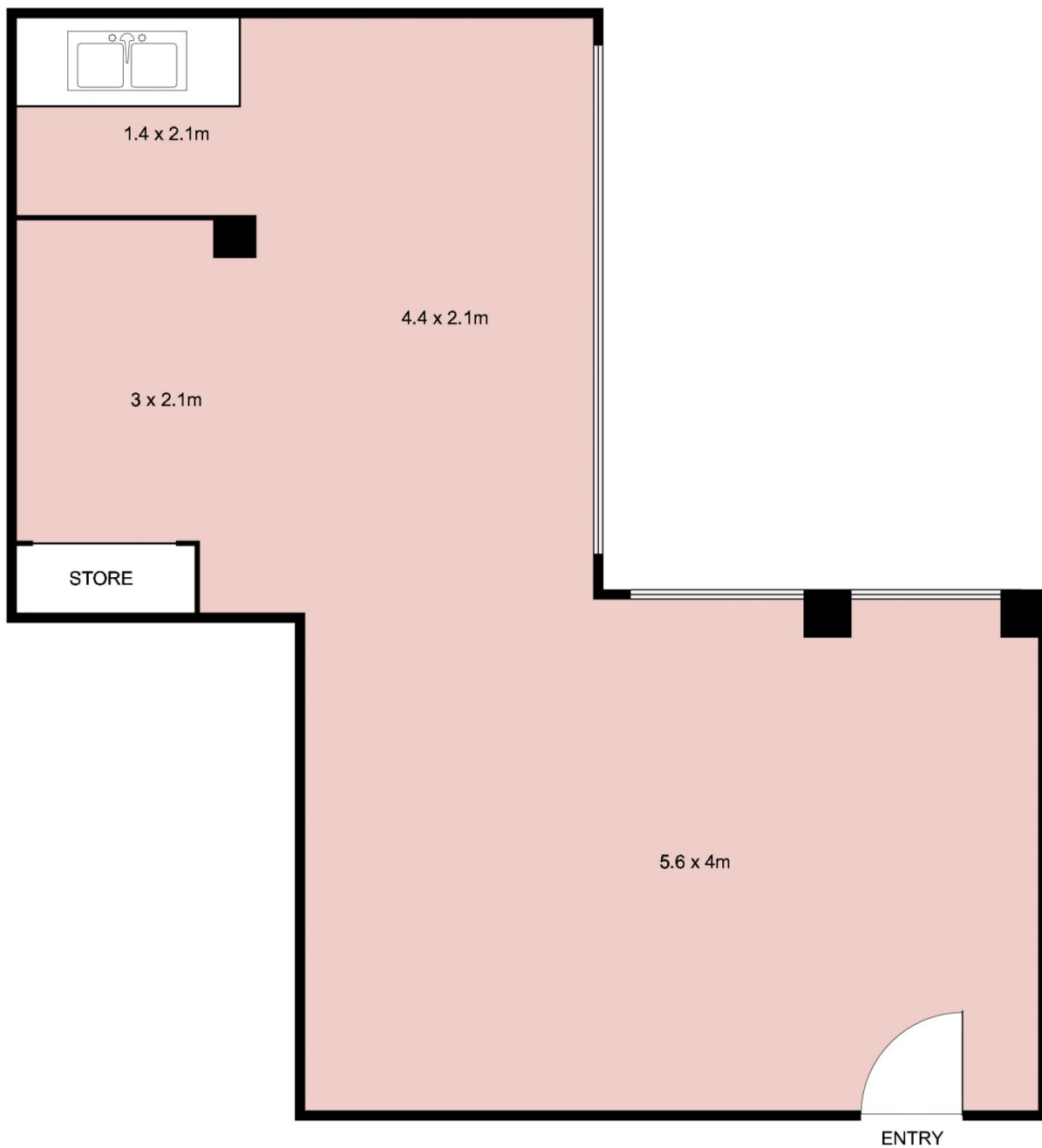
- Boutique commercial or professional suite
- Well presented with modern interiors
- Large windows providing excellent light
- Glass door entranceway adjoining lift lobby
- Plasterboard ceilings with halogen lighting
- Internal kitchenette with integrated storage
- Adaptable floor plan and efficient layout
- Ducted reverse cycle air conditioning system
- Popular and prominent commercial building
- Quality building services including two lifts
- Blue Ribbon location near Martin Place
- Minutes to Queen's Square and Hyde Park
- Close to Sydney's iconic Opera House
- Exclusive and prestigious CBD address
- Surrounded by popular cafes and bars
- Directly opposite Sydney Eye Hospital

Building Size : 39 sqm
View : <https://www.noonanproperty.com.au/sale/nsw/sydney-city/sydney/commercial/offices/5999239>



Tim Noonan
02 9231 6000

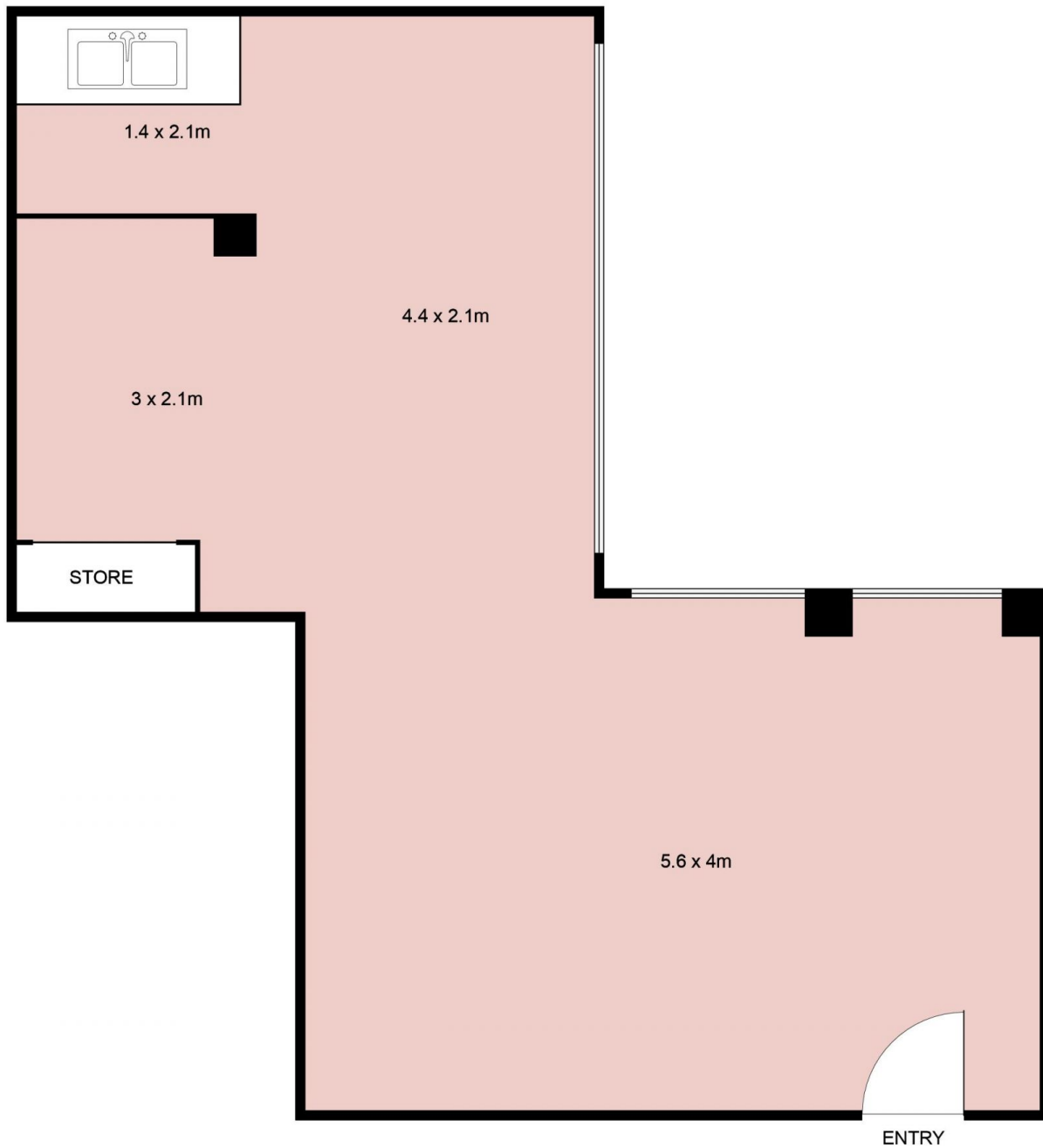
Suite 605/229 Macquarie Street, SYDNEY



This floor plan is intended as a guide only. Layout dimension are approximate only. No representation or warranties of any nature whatsoever are given or intended. Any person using this information should rely on their own enquiries.



Suite 605/229 Macquarie Street, SYDNEY



This floor plan is intended as a guide only. Layout dimension are approximate only. No representation or warranties of any nature whatsoever are given or intended. Any person using this information should rely on their own enquiries.