



## 1104/37 Bligh Street Sydney NSW

Noonan Property are pleased to present Suite 1104, 37 Bligh Street, Sydney for sale.

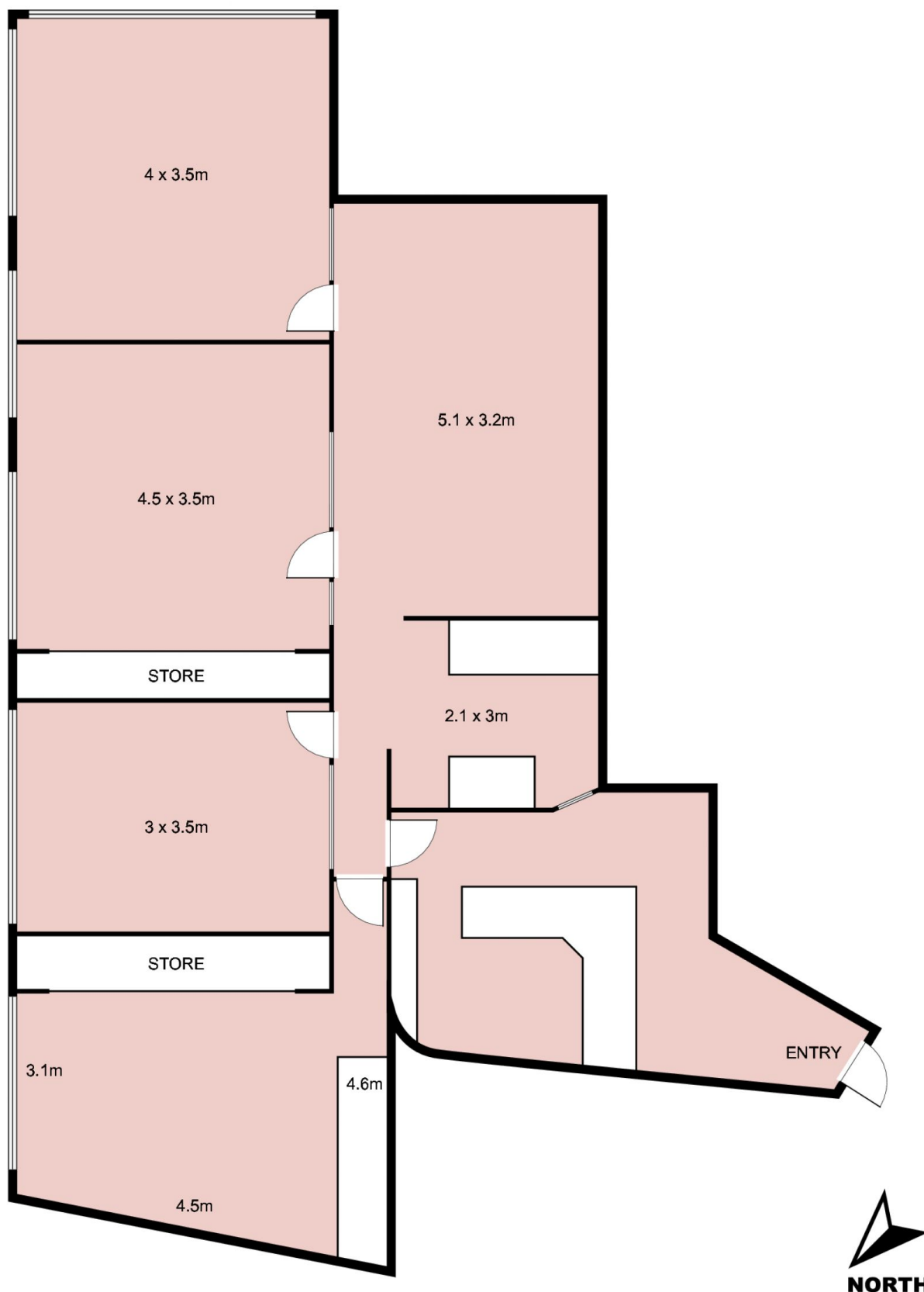
- One of Sydney's best commercial office suites
- Truly unique and irreplaceable opportunity
- Envious corner positioning and excellent light
- Highrise floor with expansive CBD skyline views
- Large windows wrapping the entire Eastern facade
- Exclusive, impressive and inspired work space
- Quality fitout with bespoke custom cabinetry
- Professional reception and boardroom areas
- Mixture of offices and open plan work spaces
- Highly acclaimed commercial strata building
- Striking main lobby area with high spec finishes
- Excellent building services including three lifts
- Opposite the new Martin Place Metro Station
- Handy to Sydney's finest restaurants and bars

**Building Size** : 106 sqm  
**View** : <https://www.noonanproperty.com.au/sale/nsw/sydney-city/sydney/commercial/offices/5999241>



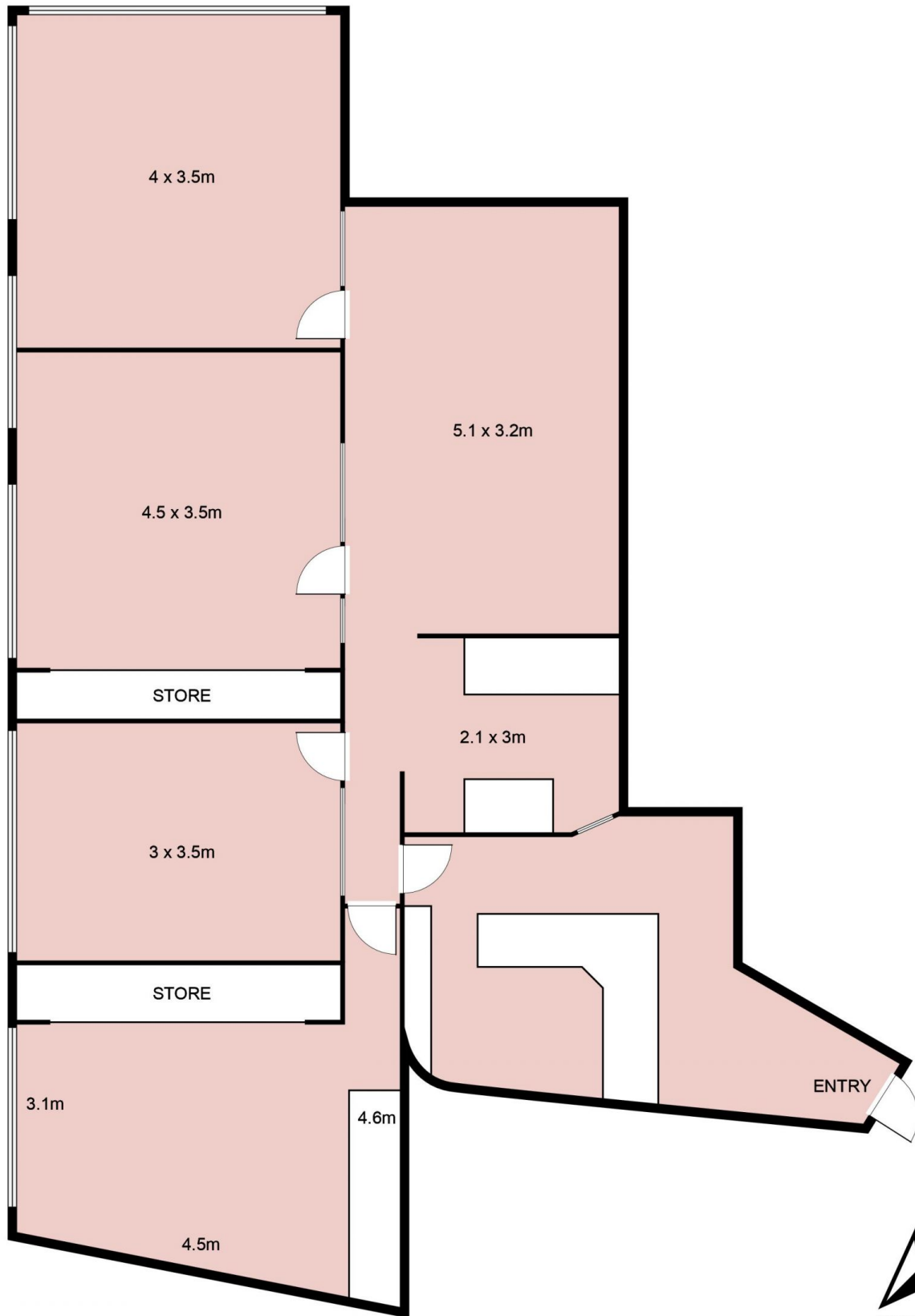
**Tim Noonan**  
**02 9231 6000**

# Suite 1104/ 37 Bligh Street, SYDNEY



This floor plan is intended as a guide only. Layout dimension are approximate only. No representation or warranties of any nature whatsoever are given or intended. Any person using this information should rely on their own enquiries.

# Suite 1104/ 37 Bligh Street, SYDNEY



This floor plan is intended as a guide only. Layout dimension are approximate only. No representation or warranties of any nature whatsoever are given or intended. Any person using this information should rely on their own enquiries.