



14/64 Castlereagh Street Sydney NSW

- Stylish and creative commercial space
- Landmark location near Martin Place
- Newly renovated and superbly presented
- High ceilings with exposed services
- Open plan and plenty of natural light
- Direct and prominent lift lobby exposure
- Internal kitchenette and storage facilities
- Prestigious building with elegant finishes
- Flagship Bvlgari store at ground level
- Prime CBD location near Hyde Park
- Close to Wynyard and Circular Quay
- Envious locale on Sydney's 'Rodeo Drive'
- Minutes to Queen's Square and Courts
- Perfect small business office solution

Building Size : 64 sqm

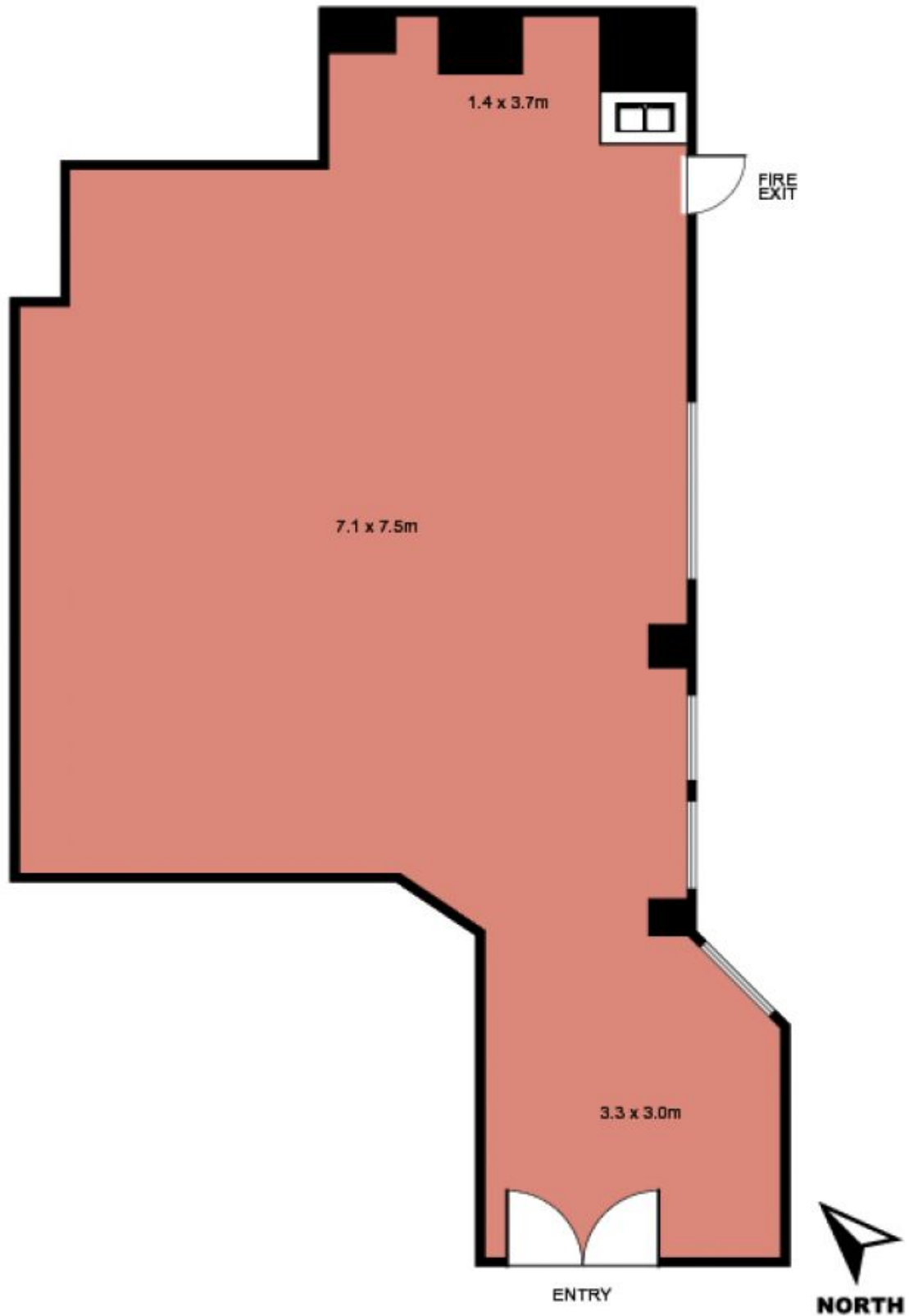
View : <https://www.noonanproperty.com.au/lease/nsw/sydney-city/sydney/commercial/offices/5999245>



Tim Noonan
02 9231 6000

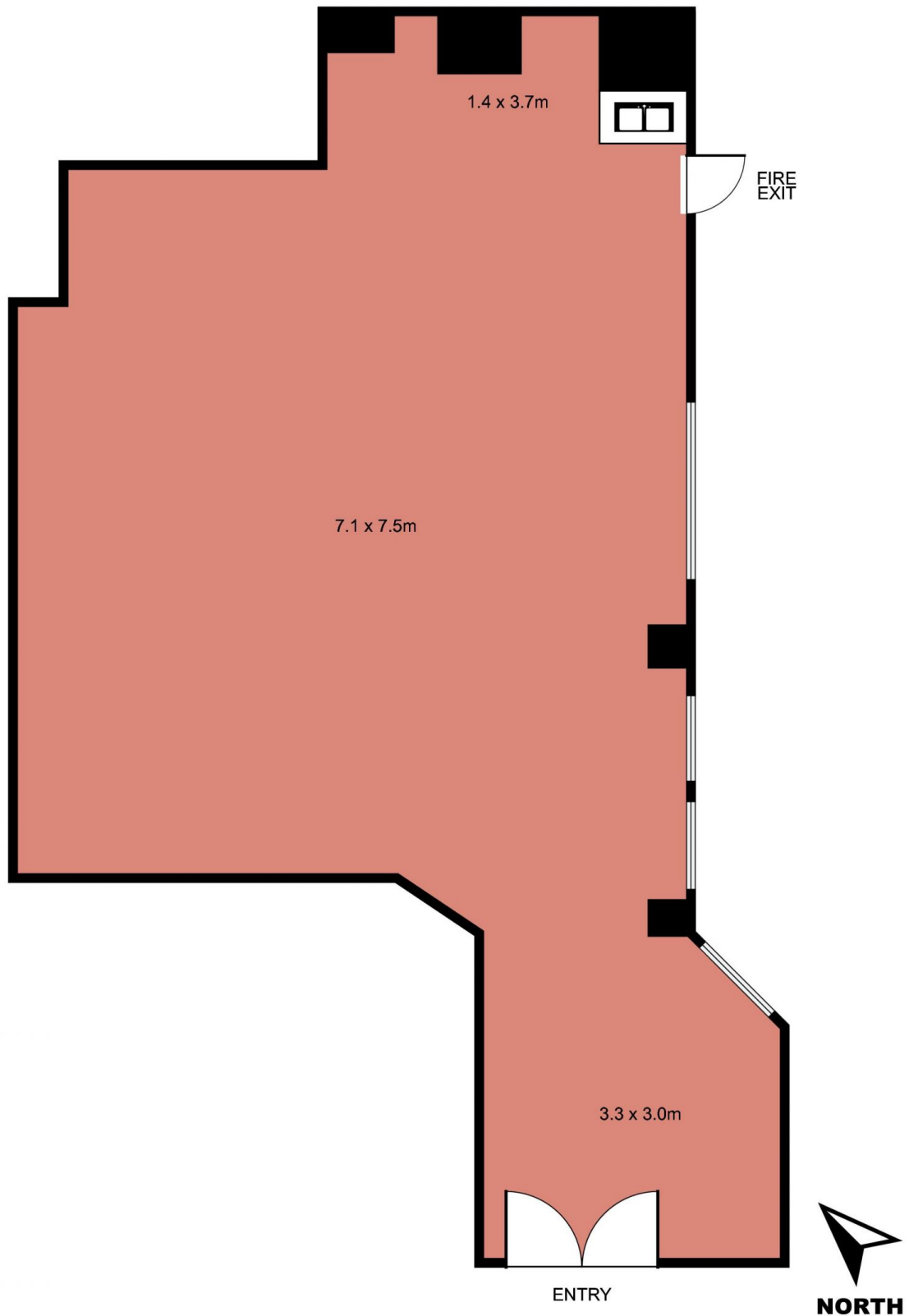
Size - 64 sqm approx

**Suite 14, Level 4, 64 Castlereagh Street,
SYDNEY**



This floor plan is intended as a guide only. Layout dimension are approximate only. No representation or warranties of any nature whatsoever are given or intended. Any person using this information should rely on their own enquiries.

Suite 14, Level 4, 64 Castlereagh Street, SYDNEY



This floor plan is intended as a guide only. Layout dimension are approximate only. No representation or warranties of any nature whatsoever are given or intended. Any person using this information should rely on their own enquiries.