



Level 8/263 Clarence Street Sydney NSW

Noonan Property has been exclusively appointed to offer for sale Level 8, 263 Clarence Street, Sydney.

- Impressive whole floor with refined finishes
- Large basement storage unit on separate title
- Contemporary, vibrant and inspired workspace
- Bespoke fitout for leading architectural firm
- East facing windows overlooking Clarence Street
- High ceilings throughout maximizing light and space
- Open plan work spaces and separate utilities area
- Two ultra-impressive client meeting/boardrooms
- Large breakout space with kitchen and dishwasher
- Efficient, regular and easily sub dividable floor plan
- Prominent and distinctive commercial building
- Striking facade with geometric glass paneling
- Designed by Italian architect Mario Arnaboldi
- Quality building services including three lifts

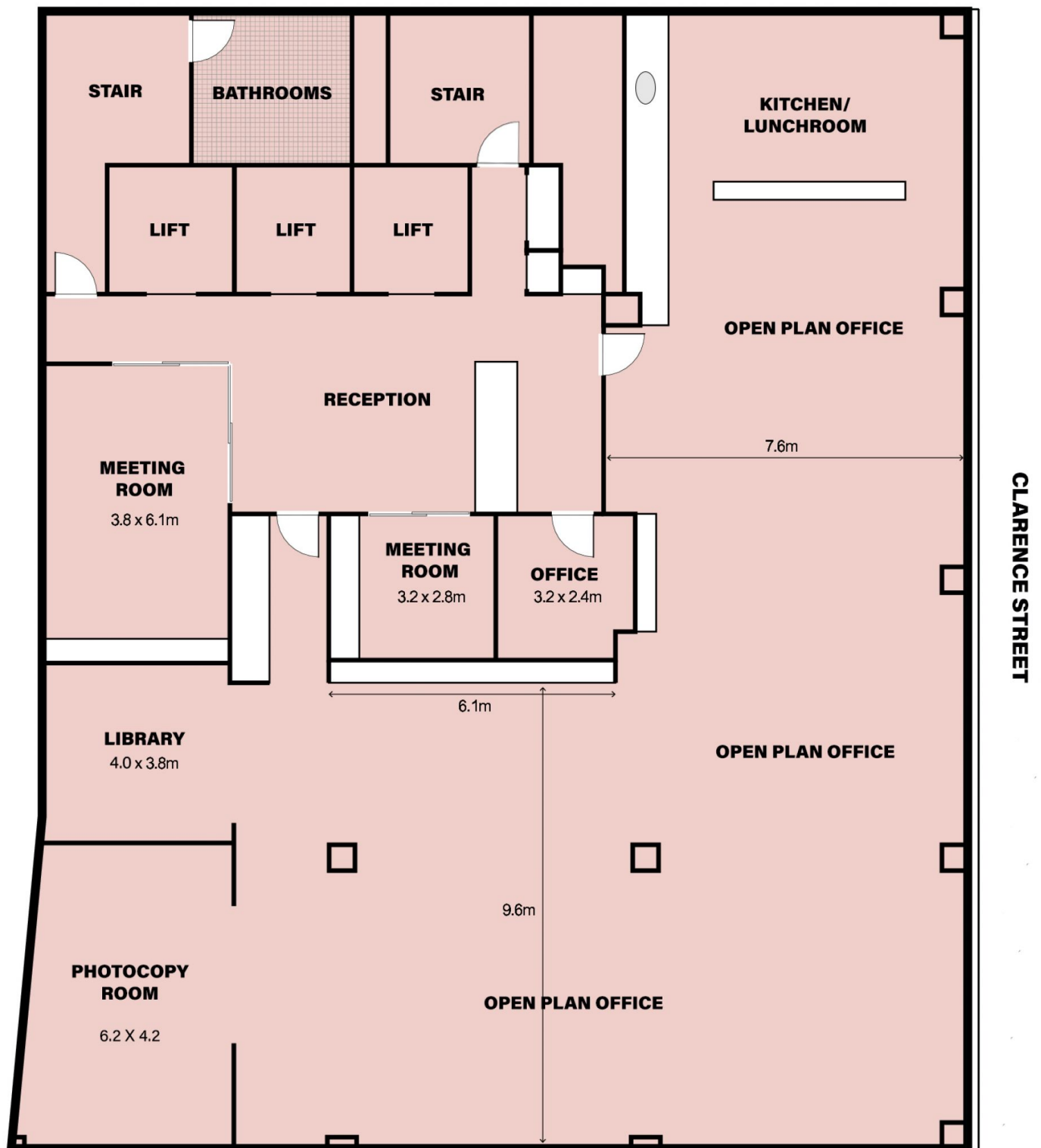
Building Size : 430 sqm

View : <https://www.noonanproperty.com.au/sale/nsw/sydney-city/sydney/commercial/offices/5999246>



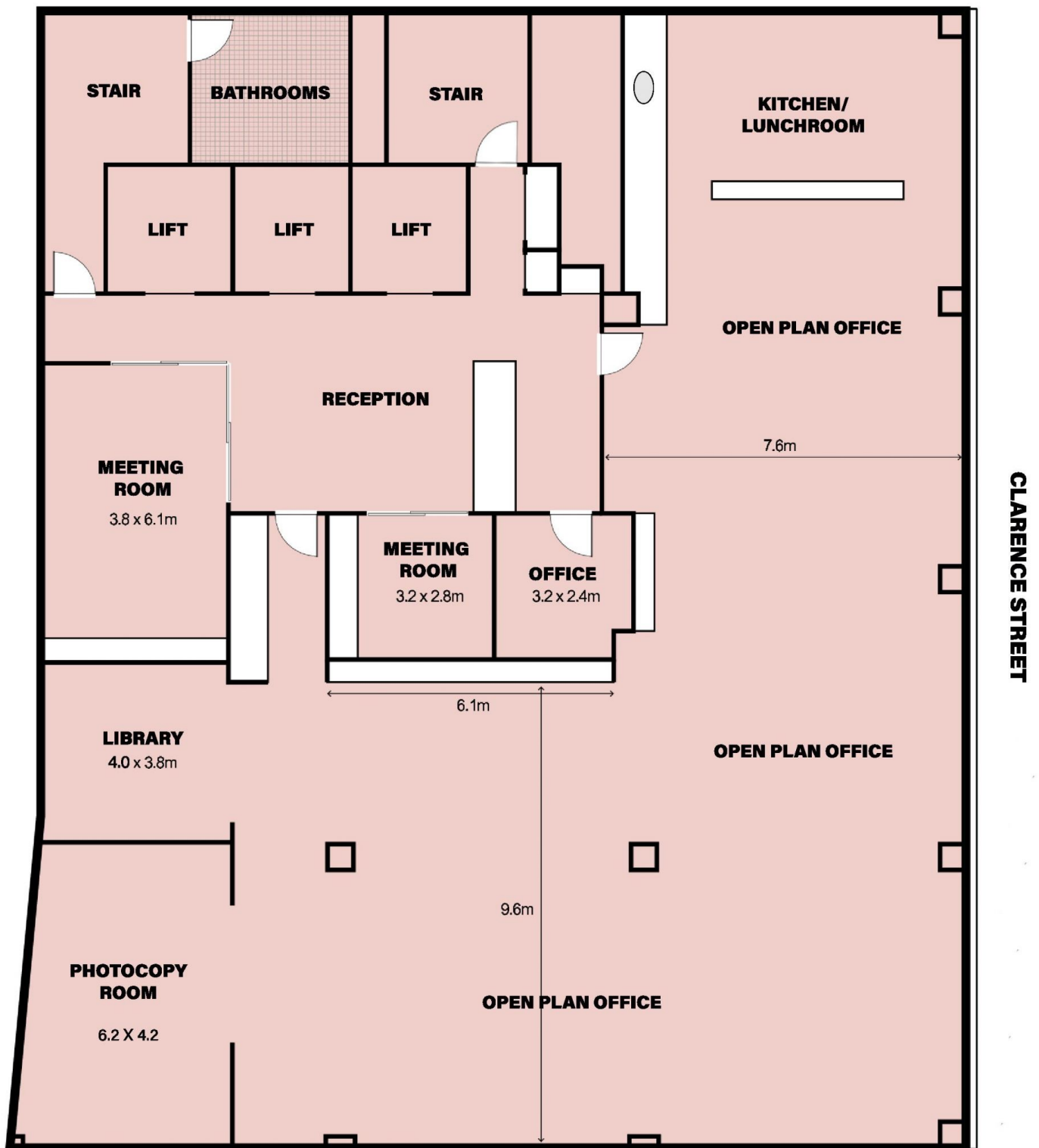
Tim Noonan
02 9231 6000

**Level 8, 263 Clarence Street,
SYDNEY**



NORTH

**Level 8, 263 Clarence Street,
SYDNEY**



NORTH