

# NOONAN PROPERTY



## Level 6/6 Bridge Street Sydney NSW

3 3

Noonan Property has been exclusively appointed to offer for sale The Penthouse, Level 6, 6 Bridge Street, Sydney.

- Prestigious and unique whole floor penthouse
- Separate living & dining spaces with balcony access
- Large master bedroom with ensuite bathroom
- Interconnecting front and rear terrace balconies
- Kitchen with stone benchtops and Miele appliances
- Three bathrooms and internal laundry facilities
- Top floor positioning with CBD skyline views
- Expansive windows and excellent natural light
- Direct lift access opening onto a private lobby
- Expansive windows and excellent natural light
- Suitable for commercial or residential usage
- Stunning sandstone Heritage building c1885
- Iconic and world class Circular Quay location
- Walking distance to Wynyard and Martin Place

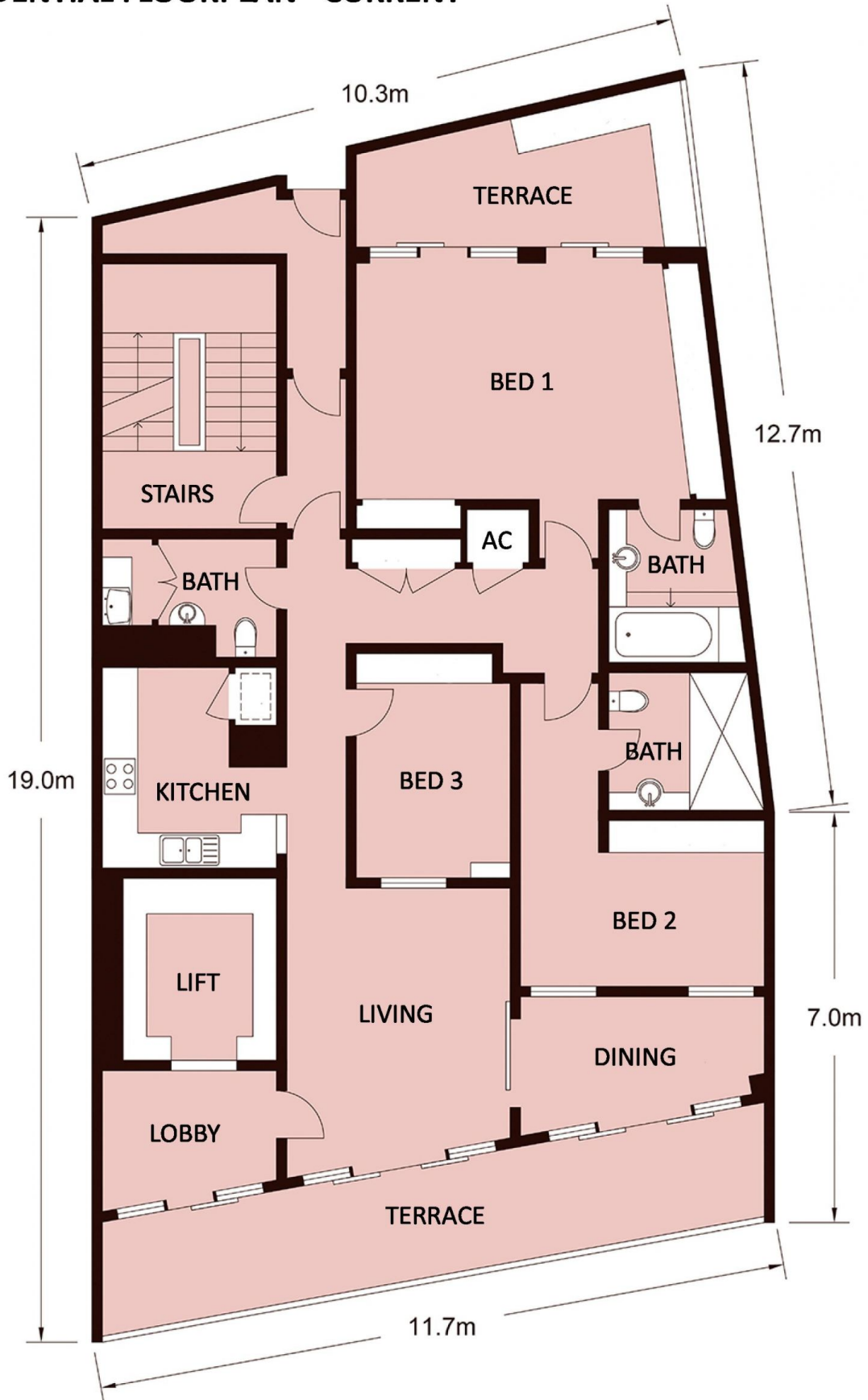
**Building Size** : 157 sqm  
**View** : <https://www.noonanproperty.com.au/sale/nsw/sydney-city/sydney/residential/apartment/5999249>



**Tim Noonan**  
02 9231 6000

<https://www.noonanproperty.com.au>  
Commercial Property Sales and Leasing Sydney CBD

# RESIDENTIAL FLOORPLAN - CURRENT





# COMMERCIAL FLOORPLAN - CONCEPT

