



## Level 11/70 Pitt Street Sydney NSW

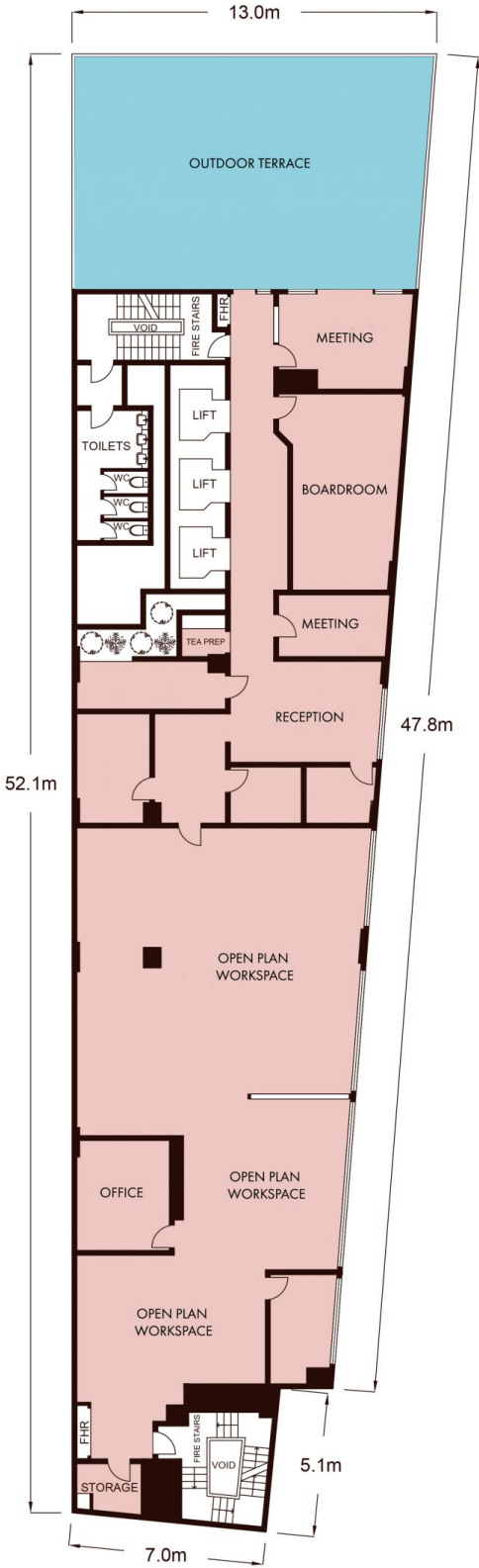
- Impressive whole floor with WOW factor
- Awesome outdoor terrace for entertaining
- Building naming rights and signage available
- Highrise positioning and expansive city views
- Large windows and excellent natural light
- Modern and well-designed fitout included
- Selection of small and large meeting rooms
- Mixture of offices and open plan work spaces
- Internal kitchenette with integrated storage
- Prominent and modern commercial building
- Impressive main lobby area with three lifts
- Exceptional CBD location near Martin Place
- Minutes to Circular Quay and Barangaroo
- Opposite direct underground access to Wynyard
- Surrounded by quality restaurants and cafes
- Highly unique opportunity in prime location

**Building Size** : 348 sqm  
**Land Size** : 348 sqm  
**View** : <https://www.noonanproperty.com.au/lease/nsw/sydney-city/sydney/commercial/offices/5999254>



**Tim Noonan**  
02 9231 6000

**Level 11/ 70 Pitt Street,  
SYDNEY**



Not to scale • All measurements are approximate • Drawn for marketing purposes only • Floorplan by © Industrie Media

