



1201/447 Kent Street Sydney NSW

- Newly renovated commercial office suite
- Highrise positioning and excellent natural light
- Expansive east and west window frontages
- Views of Darling Harbour and the CBD skyline
- Comprehensive fitout with glass partitioning
- New carpet tiles and freshly painted throughout
- Mixture of offices and open plan work spaces
- Prominent and well maintained building
- Impressive main lobby area with four lifts
- Premium location in major growth precinct
- Minutes to Barangaroo and Darling Harbour
- Close to Town Hall, Hyde Park and Haymarket
- Surrounded by quality restaurants and cafes

Size - 180 sqm approx.

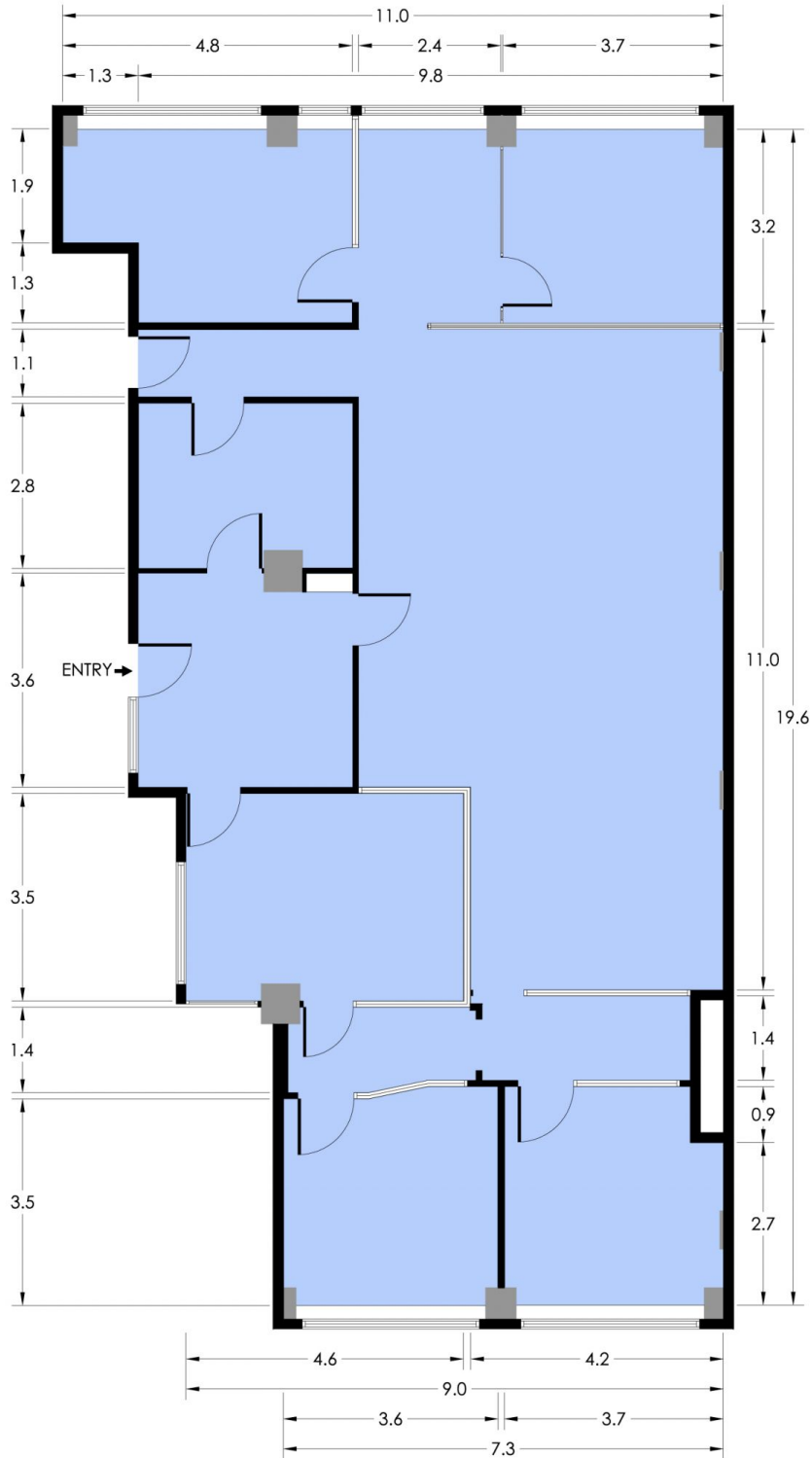
Contact Details

Building Size : 180 sqm
Land Size : 180 sqm
View : <https://www.noonanproperty.com.au/lease/nsw/sydney-city/sydney/commercial/offices/5999255>



Tim Noonan
02 9231 6000

SUITE 1201 447 KENT STREET SYDNEY



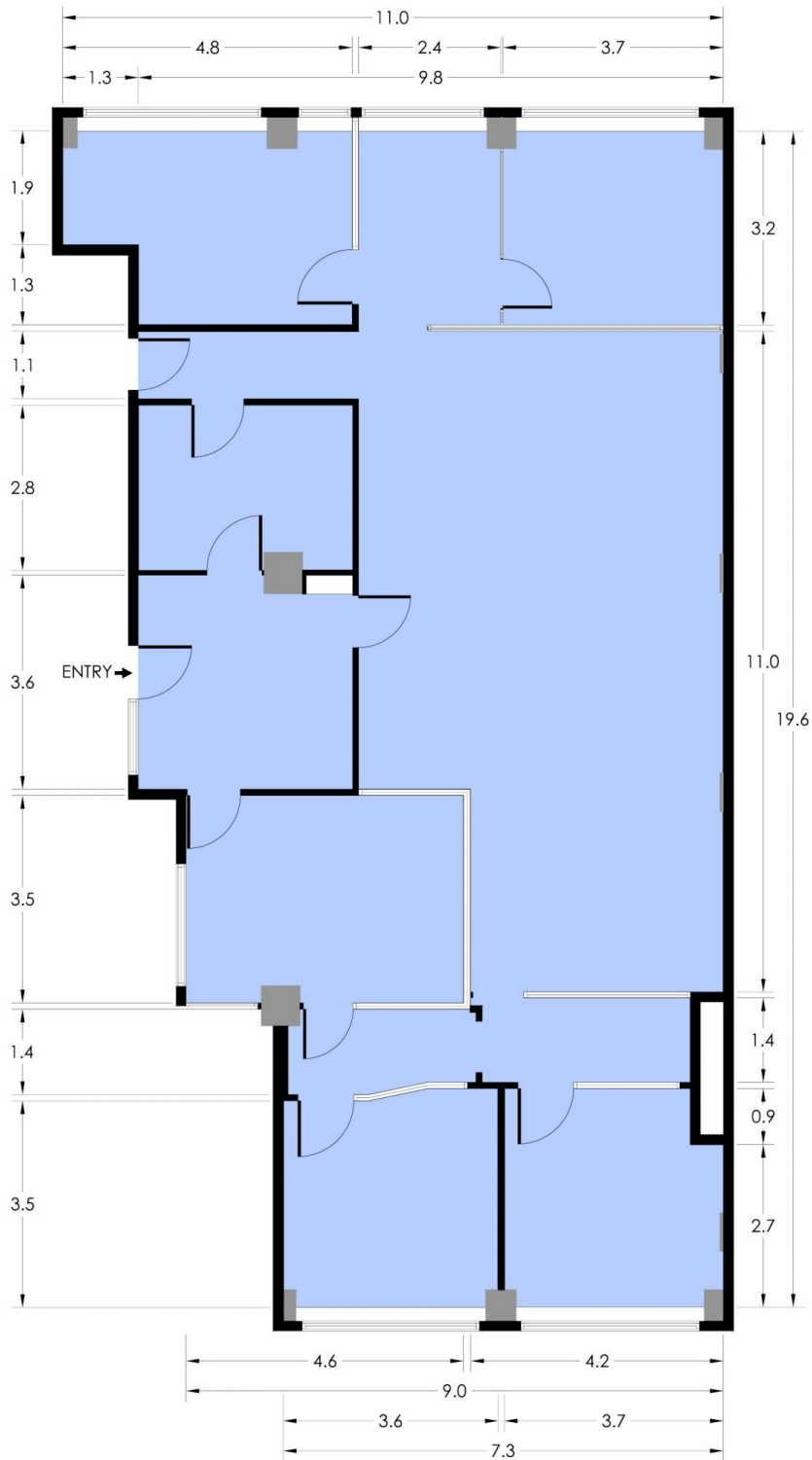
NOONAN PROPERTY

*PLANS SHOWN ONLY INDICATIVE OF LAYOUT. DIMENSIONS ARE APPROXIMATE.

Floor plan supplied by V-Mark Design Pty Ltd. This floor plan is provided for indicative purposes only.

Measurements are approximate and not to scale. The vendor, agency and supplier will accept no liability for its accuracy. Interested parties are advised to make their own independent enquiries.

SUITE 1201 447 KENT STREET SYDNEY



NOONAN PROPERTY

*PLANS SHOWN ONLY INDICATIVE OF LAYOUT. DIMENSIONS ARE APPROXIMATE.

Floor plan supplied by V-Mark Design Pty Ltd. This floor plan is provided for indicative purposes only.

Measurements are approximate and not to scale. The vendor, agency and supplier will accept no liability for its accuracy. Interested parties are advised to make their own independent enquiries.