



## 308/155 King Street Sydney NSW

- Prestigious commercial or professional suite
- Immaculately presented with elegant finishes
- Brand new carpet and freshly painted throughout
- Large windows providing plenty of natural light
- Ultra high ceilings maximising light and space
- Mixture of executive offices and meeting rooms
- Easily sub dividable with two entranceways
- Attractive views overlooking Castlereagh Street
- Iconic CBD building with classic Heritage features
- Imposing main lobby area with stately finishes
- Excellent building services including three lifts
- Envious positioning on Sydney's 'Rodeo Drive'
- Surrounded by an array of new CBD development
- Close to Circular Quay, Wynyard and Martin Place
- Minutes to Queen's Square and Hyde Park
- Blue ribbon location opposite the MLC Centre

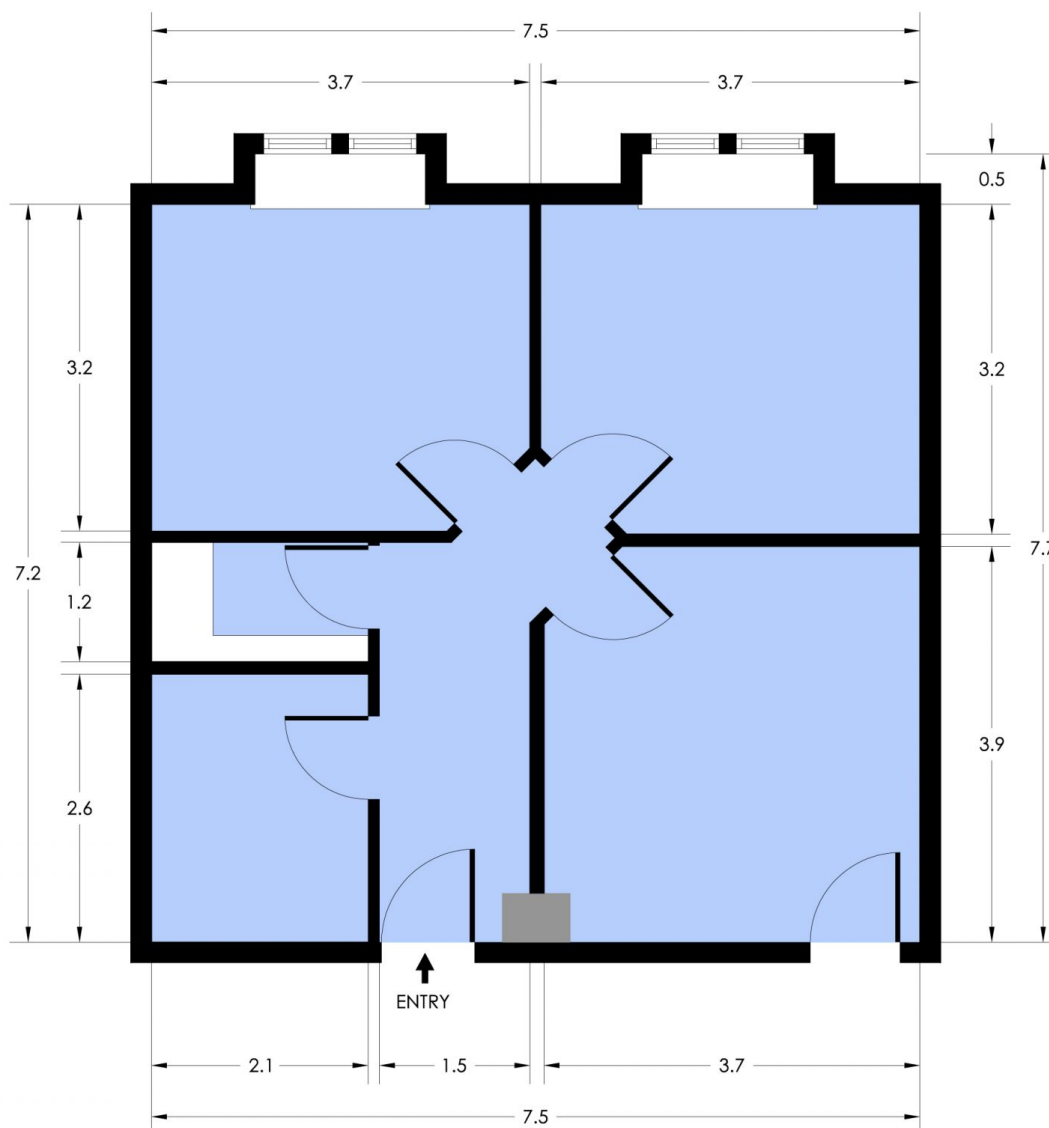
**Building Size** : 55 sqm

**View** : <https://www.noonanproperty.com.au/lease/nsw/sydney-city/sydney/commercial/offices/5999256>



**Tim Noonan**  
**02 9231 6000**

# SUITE 308 155 KING STREET SYDNEY



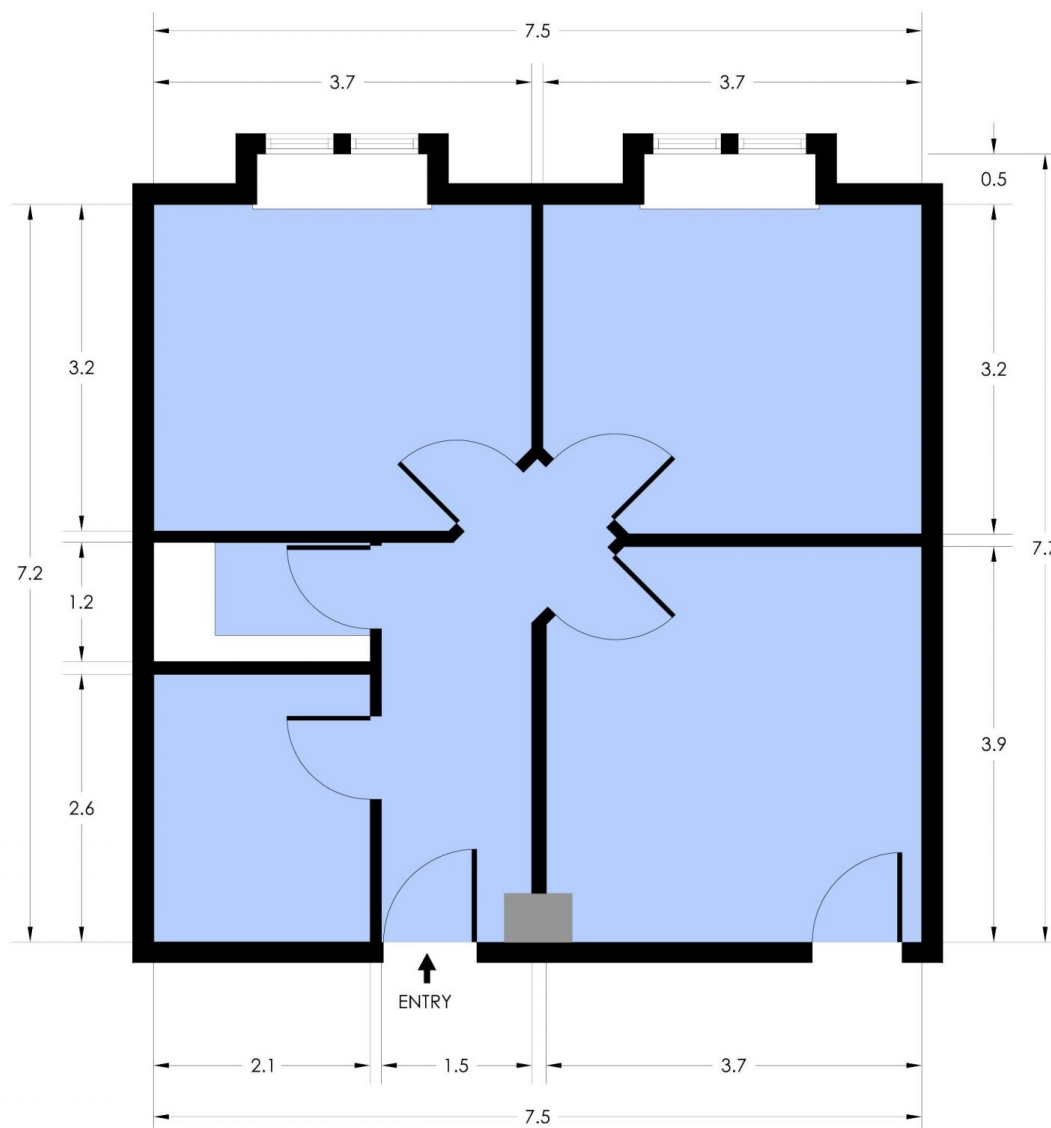
**NOONAN PROPERTY**

\*PLANS SHOWN ONLY INDICATIVE OF LAYOUT. DIMENSIONS ARE APPROXIMATE.

Floor plan supplied by V-Mark Design Pty Ltd. This floor plan is provided for indicative purposes only.

Measurements are approximate and not to scale. The vendor, agency and supplier will accept no liability for its accuracy. Interested parties are advised to make their own independent enquiries.

# SUITE 308 155 KING STREET SYDNEY



**NOONAN PROPERTY**

\*PLANS SHOWN ONLY INDICATIVE OF LAYOUT. DIMENSIONS ARE APPROXIMATE.

Floor plan supplied by V-Mark Design Pty Ltd. This floor plan is provided for indicative purposes only.

Measurements are approximate and not to scale. The vendor, agency and supplier will accept no liability for its accuracy. Interested parties are advised to make their own independent enquiries.