



906/5 Hunter Street Sydney NSW

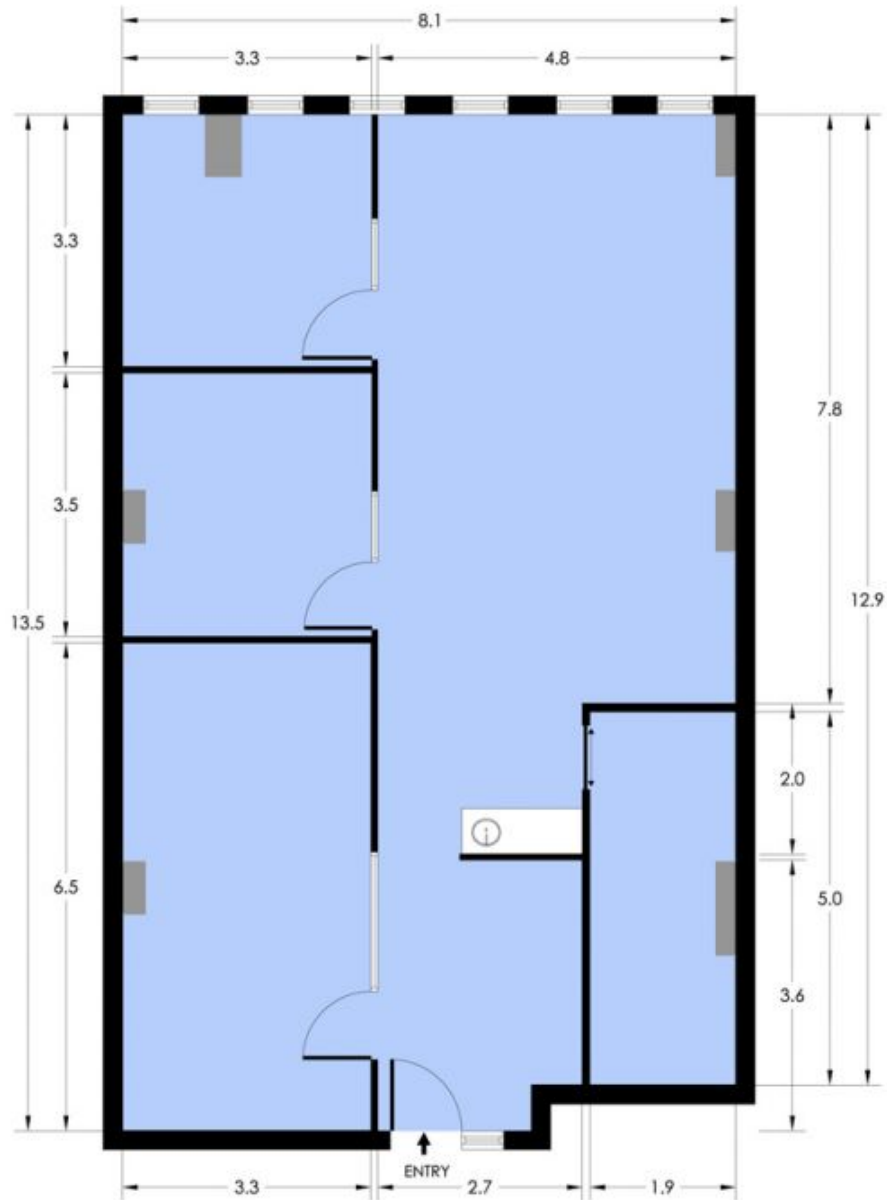
- Modern and impressive commercial suite
- North facing with excellent natural light
- Attractive views overlooking Hunter Street
- Newly renovated with high spec finishes
- Comprehensive fitout with glass partitioning
- New carpet tiles and freshly painted throughout
- Reception with large interconnecting boardroom
- Mixture of offices and open plan work spaces
- Prime positioning with direct lift exposure
- Internal kitchenette with integrated storage
- Prominent commercial building with 3 lifts
- Striking main lobby area with modern finishes
- Well managed building with quality services
- Direct undercover access to Wynyard Station
- Close to Circular Quay and Martin Place
- Gateway positioning for Barangaroo
- Quality commercial space available now

Building Size : 105 sqm
View : <https://www.noonanproperty.com.au/lease/nsw/sydney-city/sydney/commercial/offices/5999257>



Tim Noonan
02 9231 6000

SUITE 906 5 HUNTER STREET SYDNEY



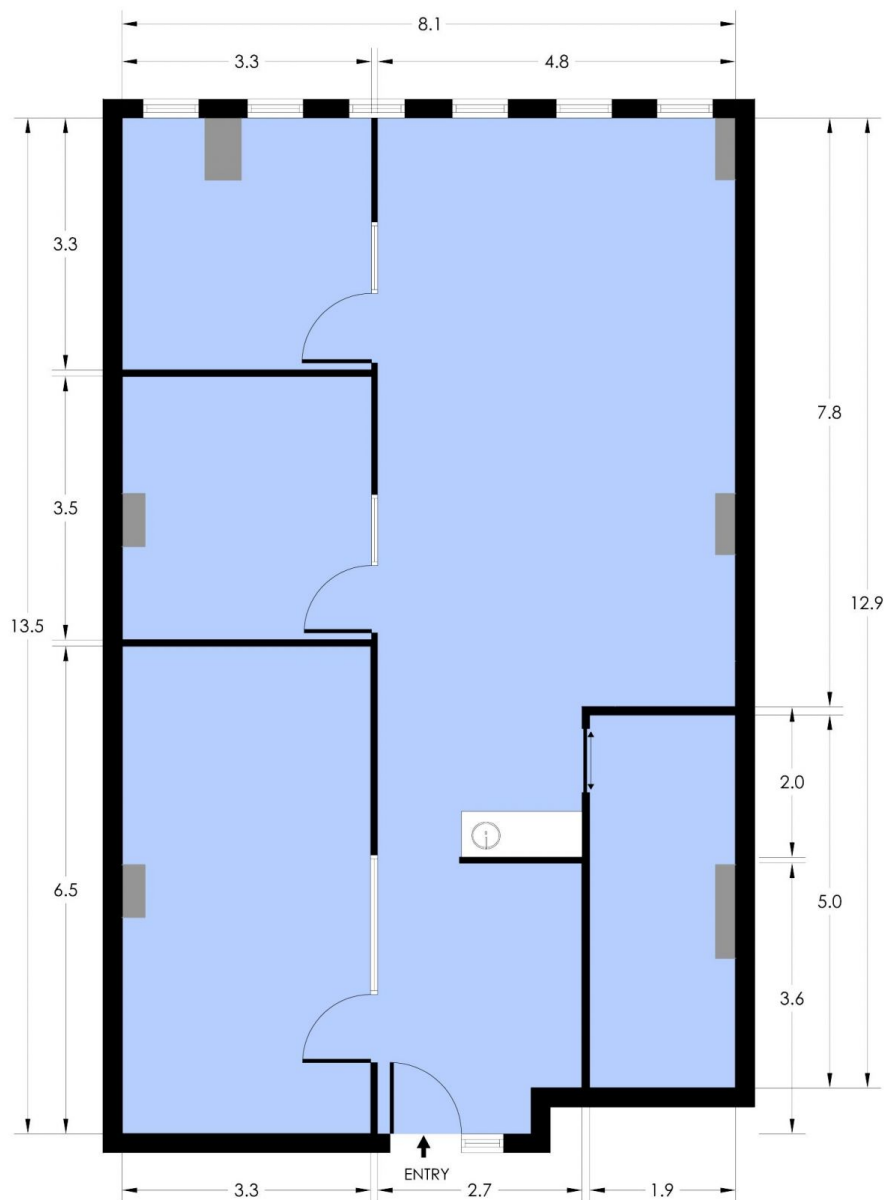
NOONAN PROPERTY

*PLANS SHOWN ONLY INDICATIVE OF LAYOUT. DIMENSIONS ARE APPROXIMATE.

Floor plan supplied by V-Mark Design Pty Ltd. This floor plan is provided for indicative purposes only.

Measurements are approximate and not to scale. The vendor, agency and supplier will accept no liability for its accuracy. Interested parties are advised to make their own independent enquiries.

SUITE 906 5 HUNTER STREET SYDNEY



NOONAN PROPERTY

*PLANS SHOWN ONLY INDICATIVE OF LAYOUT. DIMENSIONS ARE APPROXIMATE.

Floor plan supplied by V-Mark Design Pty Ltd. This floor plan is provided for indicative purposes only.

Measurements are approximate and not to scale. The vendor, agency and supplier will accept no liability for its accuracy. Interested parties are advised to make their own independent enquiries.