



709/229 Macquarie Street Sydney NSW

- Stylish commercial or professional suite
- Timber flooring and halogen lighting
- Open plan with an adaptable layout
- Two washbasins with integrated storage
- Popular commercial building with two lifts
- Superb CBD location near Martin Place
- Minutes to Wynyard and Circular Quay
- Close to Hyde Park and St James Station
- Opposite Sydney Hospital and NSW Parliament
- Handy to Supreme Court and Queen's Square
- Multiple car parking options nearby
- Exclusive and prestigious CBD address

Size - 47 sqm approx

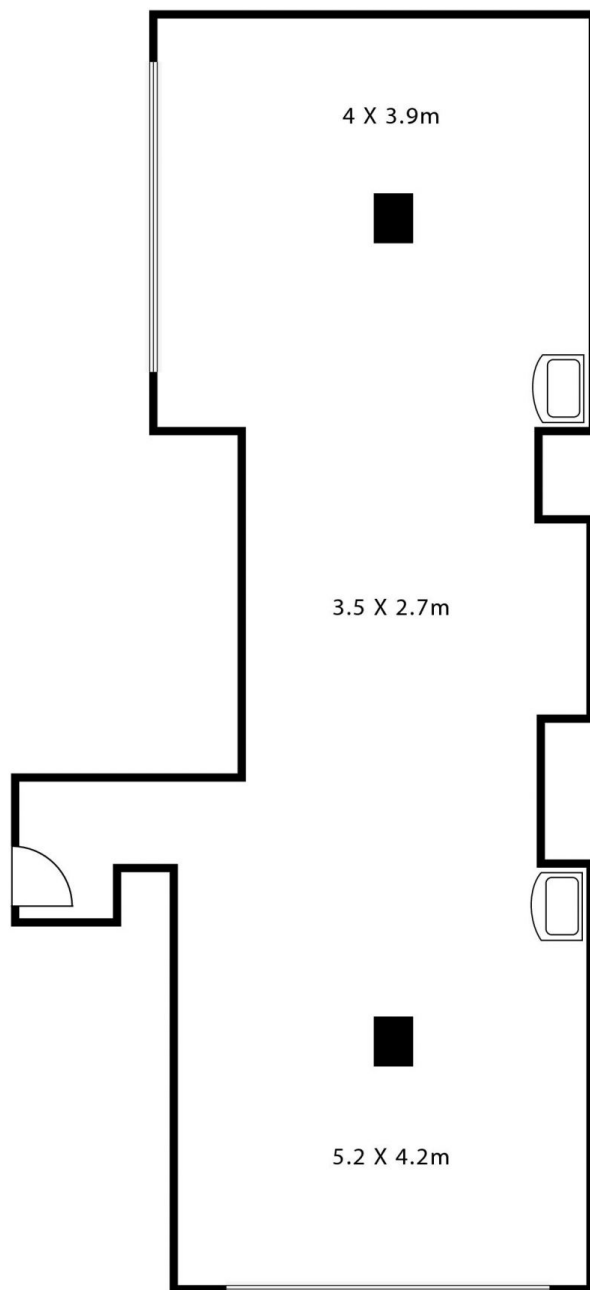
Rental - \$500 per sqm gross per annum + GST
(\$23,500 per annum + GST)

Price : \$500/m2 Gross PA
Building Size : 47 sqm
Land Size : 47 sqm
View : <https://www.noonanproperty.com.au/lease/nsw/sydney-city/sydney/commercial/offices/5999262>



Tim Noonan
02 9231 6000

SUITE 709, 229 MACQUARIE STREET SYDNEY



*PLANS SHOWN ONLY INDICATIVE OF LAYOUT. DIMENSIONS ARE APPROXIMATE.
Floor plan supplied by V-Mark Design Pty Ltd. This floor plan is provided for indicative purposes only.
Measurements are approximate and not to scale. The vendor, agency and supplier will accept no liability
for its accuracy. Interested parties are advised to make their own independent enquiries.

NOONAN
PROPERTY