

## 906/5 Hunter Street Sydney NSW

- Modern and impressive commercial suite
- One of Sydney's best commercial strata properties
- North facing aspect with excellent natural light
- Attractive views overlooking the CBD skyline
- Newly renovated with modern and stylish finishes
- Quality commercial fitout with glass partitioning
- New carpet tiles and freshly painted throughout
- Reception with large interconnecting boardroom
- Mixture of offices and open plan work spaces
- Prime high-rise positioning with direct lift exposure
- Internal kitchenette with integrated storage
- Prominent commercial building with three lifts
- Striking main lobby area with modern finishes
- Well managed building with quality services
- Exceptional location opposite the Wynyard Place
- Only 50m from the new George Street Light Rail
- Surrounded by an array of new CBD development

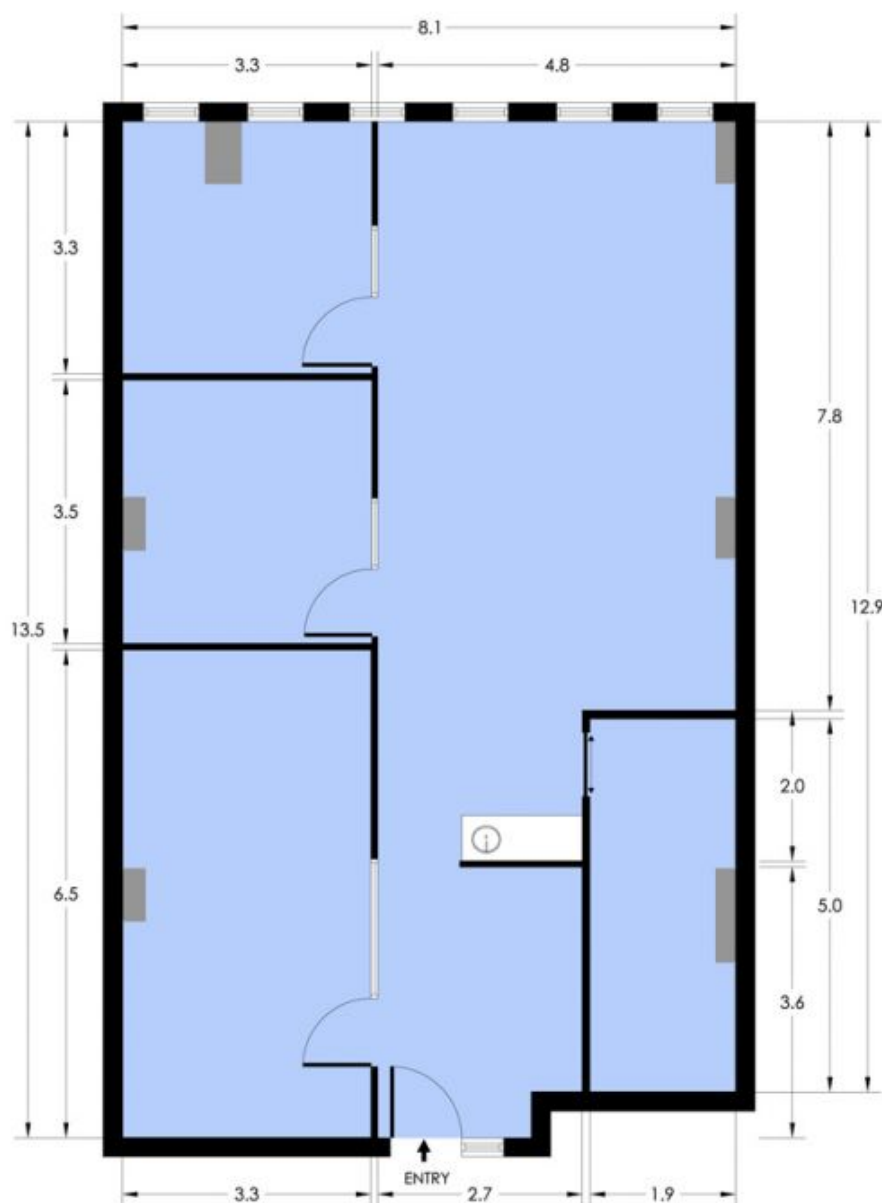
**Building Size** : 105 sqm

**View** : <https://www.noonanproperty.com.au/sale/nsw/sydney-city/sydney/commercial/offices/5999264>



**Tim Noonan**  
**02 9231 6000**

# SUITE 906 5 HUNTER STREET SYDNEY

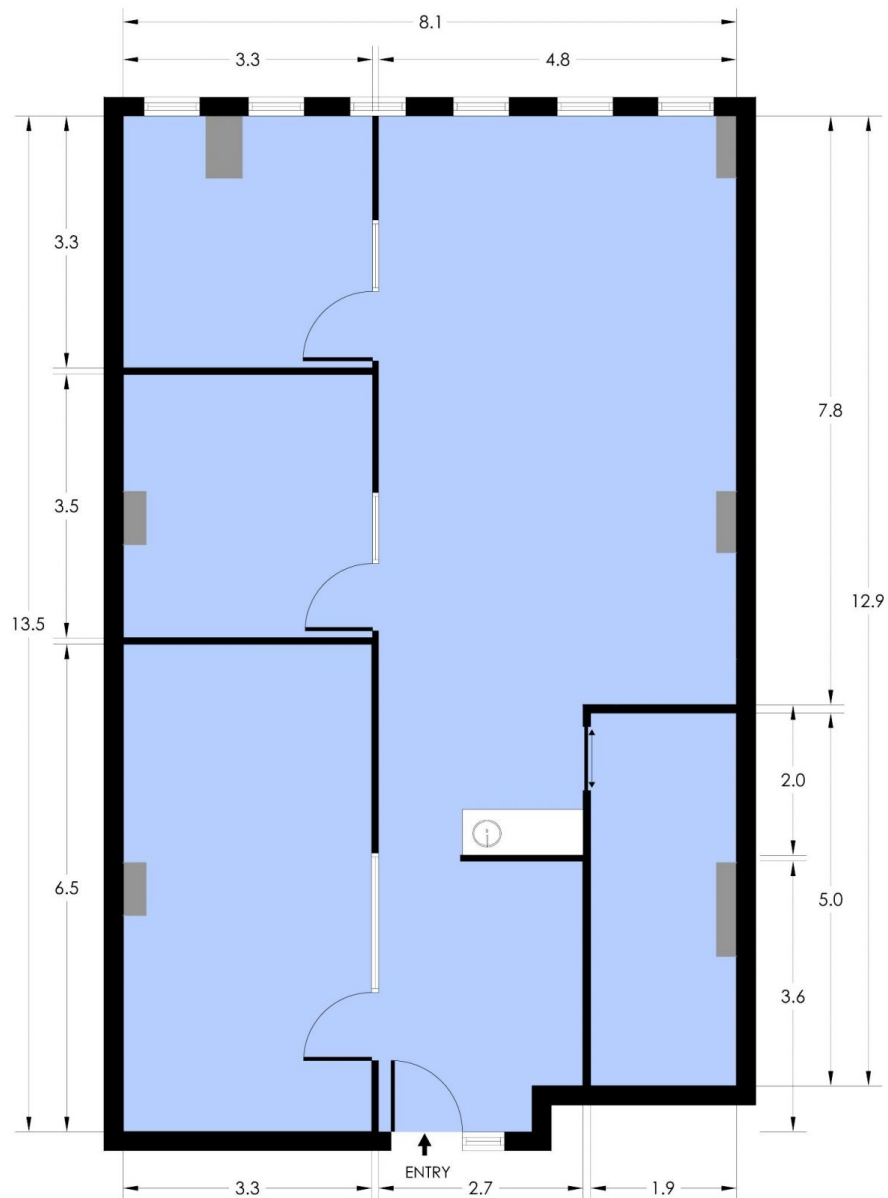


**NOONAN PROPERTY**

\*PLANS SHOWN ONLY INDICATIVE OF LAYOUT. DIMENSIONS ARE APPROXIMATE.

Floor plan supplied by V-Mark Design Pty Ltd. This floor plan is provided for indicative purposes only.

Measurements are approximate and not to scale. The vendor, agency and supplier will accept no liability for its accuracy. Interested parties are advised to make their own independent enquiries.

**NOONAN PROPERTY**

Floor plan supplied by V-Mark Design Pty Ltd. This floor plan is provided for indicative purposes only. Measurements are approximate and not to scale. The vendor, agency and supplier will accept no liability.

Measurements are approximate and not to scale. The vendor, agency and supplier will accept no liability for its accuracy. Interested parties are advised to make their own independent enquiries.