

## 411/350 George Street Sydney NSW

- Superb commercial suite of unrivalled quality
- Prominent, distinguished and inspired workspace
- Ultra high ceilings maximising light and space
- Large windows providing excellent natural light
- Open plan workspace and adaptable floor plan
- Dark timber floors and decorative wall finishes
- Iconic CBD building with classic Heritage features
- Stunning façade of rock-faced Bowral trachyte
- Designed by prominent architect Edward Raht
- Imposing main lobby area with concierge
- Highly coveted location near Martin Place
- Close to Circular Quay and Wynyard Station
- Opposite the new George Street Light Rail
- Minutes to GPO, Town Hall and Barangaroo
- Handy to Sydney's best restaurants and bars
- Vacant and ready for immediate occupancy

**Building Size** : 36 sqm

**View**

: <https://www.noonanproperty.com.au/lease/nsw/sydney-city/sydney/commercial/offices/5999267>

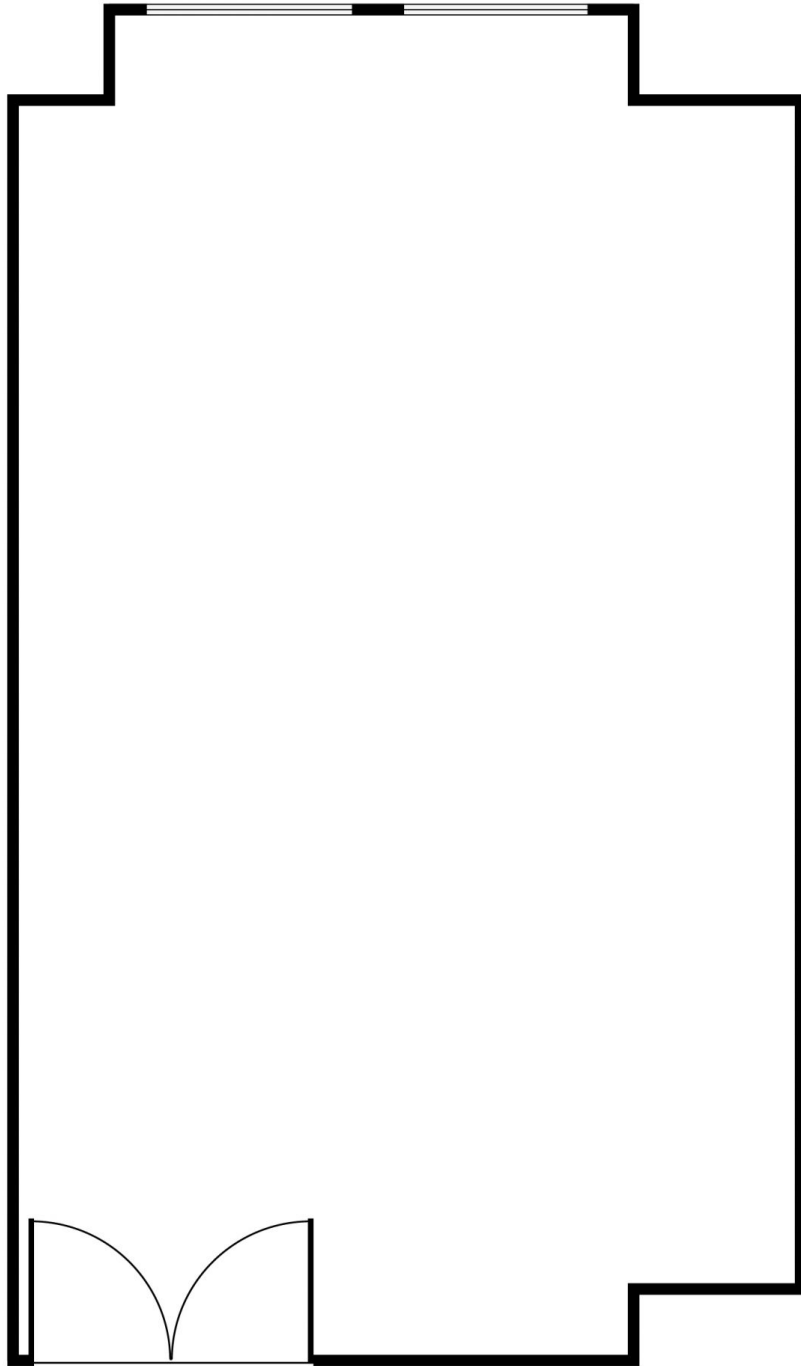


**Tim Noonan**  
02 9231 6000



**Ben Kennedy**  
0449 286 129

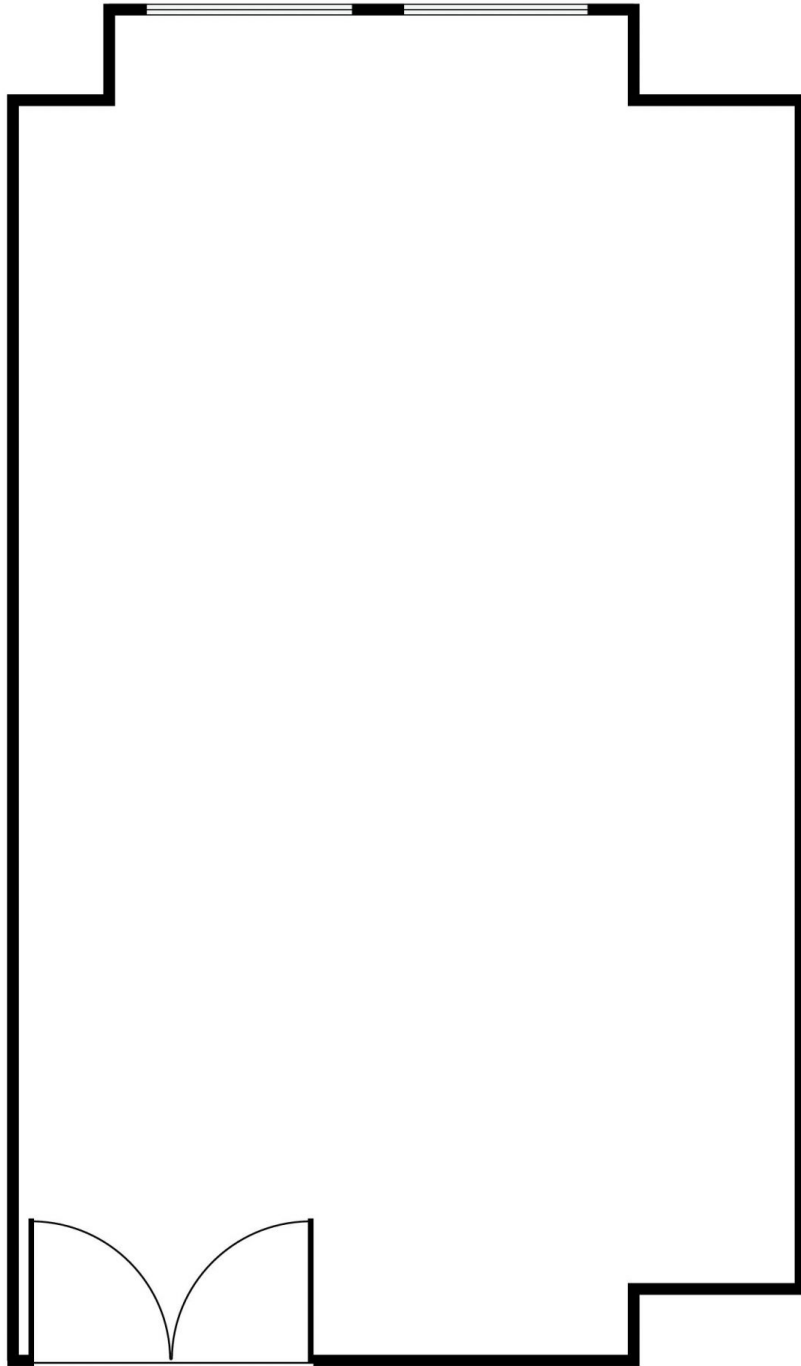
**SUITE 411**  
**350 GEORGE STREET, SYDNEY**



\*PLANS SHOWN ONLY INDICATIVE OF LAYOUT. DIMENSIONS ARE APPROXIMATE.  
This floor plan is provided for indicative purposes only.  
Measurements are approximate and not to scale. The vendor, agency and supplier will accept no liability for its accuracy. Interested parties are advised to make their own independent enquiries.

**NOONAN**  
**PROPERTY**

**SUITE 411**  
**350 GEORGE STREET, SYDNEY**



\*PLANS SHOWN ONLY INDICATIVE OF LAYOUT. DIMENSIONS ARE APPROXIMATE.  
This floor plan is provided for indicative purposes only.  
Measurements are approximate and not to scale. The vendor, agency and supplier will accept no liability for its accuracy. Interested parties are advised to make their own independent enquiries.

**NOONAN**  
**PROPERTY**