



## 904-905/99 Bathurst Street Sydney NSW

Noonan Property has been exclusively appointed to offer Suite 904-905, Sovereign Centre, 99 Bathurst Street, Sydney for sale.

- The ultimate commercial suite with stunning views
- Security car space and storage unit on separate title
- Sovereign Centre is Sydney's premier strata building
- Professional, impressive and stylish office space
- Corner positioning with an extensive 28m frontage
- Large north facing windows and excellent light
- Panoramic views overlooking the CBD skyline
- Quality commercial fitout with bespoke interiors
- Striking reception area and impressive boardroom
- Mixture of executive offices and open workspaces
- Internal kitchen facilities and integrated storage
- Efficient, regular and easily sub dividable floor plan
- Blue ribbon commercial building with five lifts

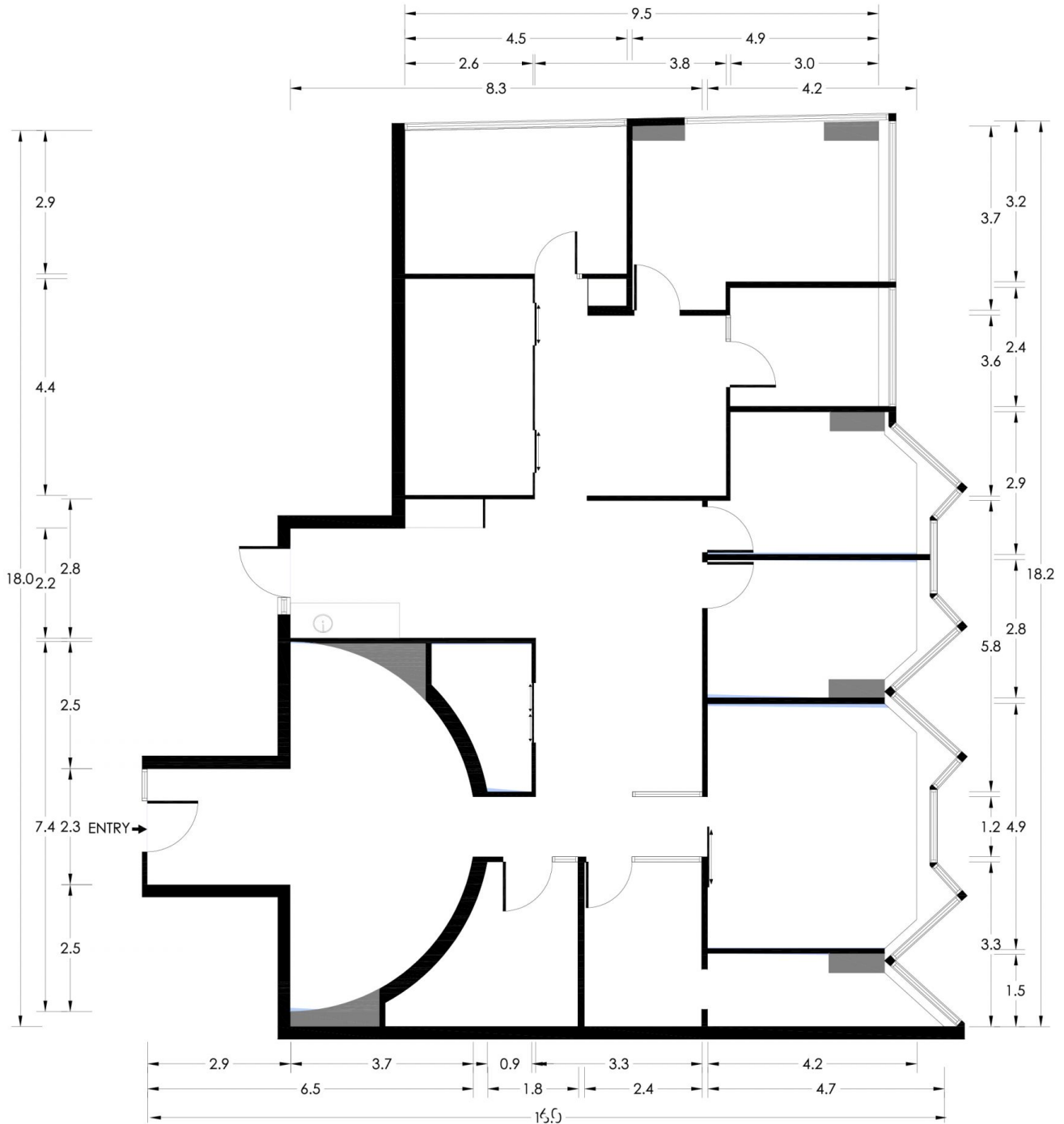
**Building Size** : 236 sqm

**View** : <https://www.noonanproperty.com.au/sale/nsw/sydney-city/sydney/commercial/offices/5999272>



**Tim Noonan**  
02 9231 6000

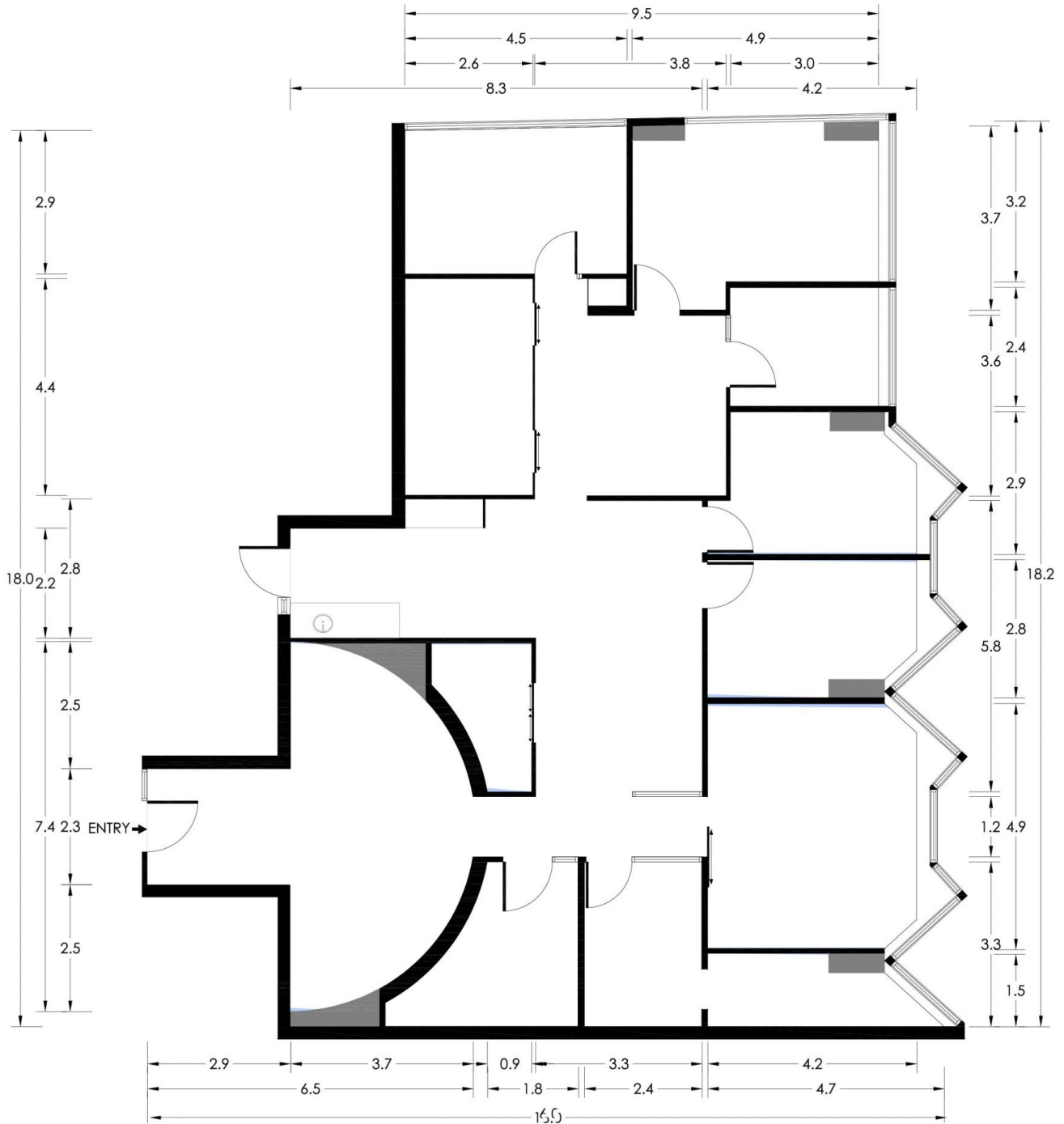
**SUITE 904-905**  
**99 BATHURST STREET, SYDNEY**



\*PLANS SHOWN ONLY INDICATIVE OF LAYOUT. DIMENSIONS ARE APPROXIMATE.  
 This floor plan is provided for indicative purposes only.  
 Measurements are approximate and not to scale. The vendor, agency and supplier will accept no liability  
 for its accuracy. Interested parties are advised to make their own independent enquiries.

**NOONAN**  
**PROPERTY**

**SUITE 904-905**  
**99 BATHURST STREET, SYDNEY**



\*PLANS SHOWN ONLY INDICATIVE OF LAYOUT. DIMENSIONS ARE APPROXIMATE.  
 This floor plan is provided for indicative purposes only.  
 Measurements are approximate and not to scale. The vendor, agency and supplier will accept no liability  
 for its accuracy. Interested parties are advised to make their own independent enquiries.

**NOONAN**  
**PROPERTY**