



1305/370 Pitt Street Sydney NSW

- Modern and impressive commercial suite
- Expansive views across the CBD skyline
- Highrise positioning and excellent light
- Well designed fitout for SME businesses
- Mixture of exec. offices and meeting rooms
- Impressive reception with double glass doors
- High ceilings and ducted air conditioning
- Direct and prominent lift lobby exposure
- Popular building with striking main lobby
- Four lifts and excellent building services
- Minutes to World Square and Hype Park
- Close to Museum and Town Hall stations
- Exclusive and prestigious CBD address

Size - 85 sqm approx.

Rental - \$550 per sqm gross per annum plus GST

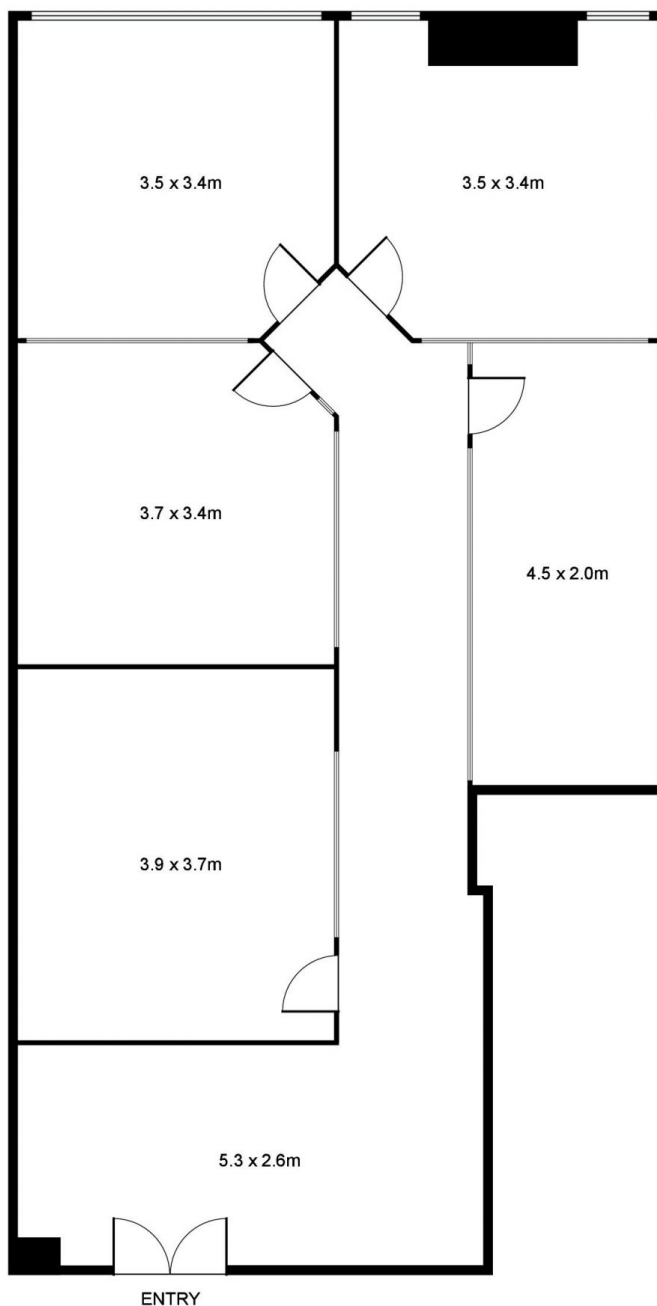
Building Size : 85 sqm
Land Size : 85 sqm
View : <https://www.noonanproperty.com.au/lease/nsw/sydney-city/sydney/commercial/offices/5999276>



Tim Noonan
02 9231 6000

SUITE 1305

370 PITT STREET SYDNEY



*PLANS SHOWN ONLY INDICATIVE OF LAYOUT. DIMENSIONS ARE APPROXIMATE.
Floor plan supplied by V-Mark Design Pty Ltd. This floor plan is provided for indicative purposes only.
Measurements are approximate and not to scale. The vendor, agency and supplier will accept no liability
for its accuracy. Interested parties are advised to make their own independent enquiries.

NOONAN PROPERTY