



805/109 Pitt Street Sydney NSW

- High quality and prestigious commercial suite
- Sydney's premier strata building, Randstad House
- Professional, impressive and stylish office space
- Impressive boardroom and open plan work spaces
- North facing windows and good natural light
- Direct lift lobby exposure to front entranceway
- Blue ribbon commercial building with six lifts
- State of the art main lobby with striking finishes
- Shower facilities and onsite building management
- Exceptional location in Sydney's financial core
- Direct undercover access to Wynyard and Barangaroo
- Close to Circular Quay, Martin Place and The Rocks
- Casual and long term basement car parking available

Size - 64 sqm approx.

Rental - \$700 per sqm gross per annum plus GST

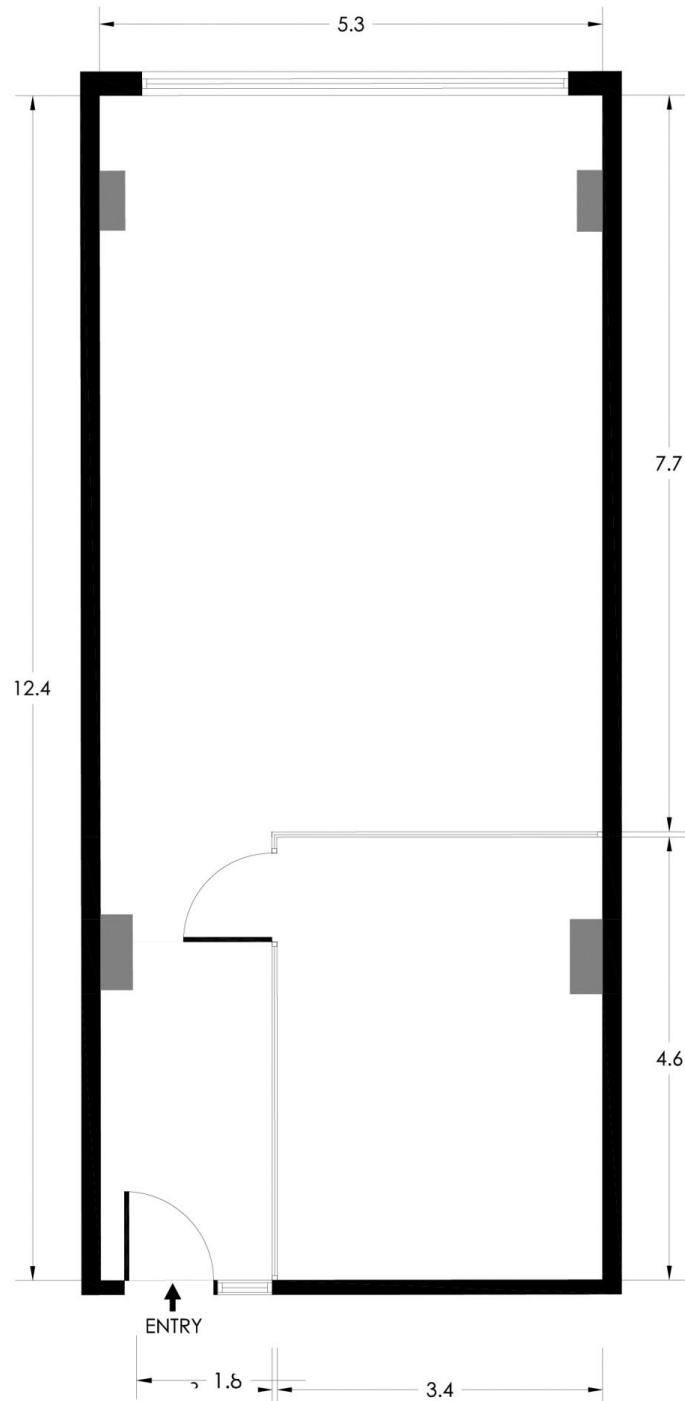
Building Size : 64 sqm

View : <https://www.noonanproperty.com.au/lease/nsw/sydney-city/sydney/commercial/offices/5999279>



Tim Noonan
02 9231 6000

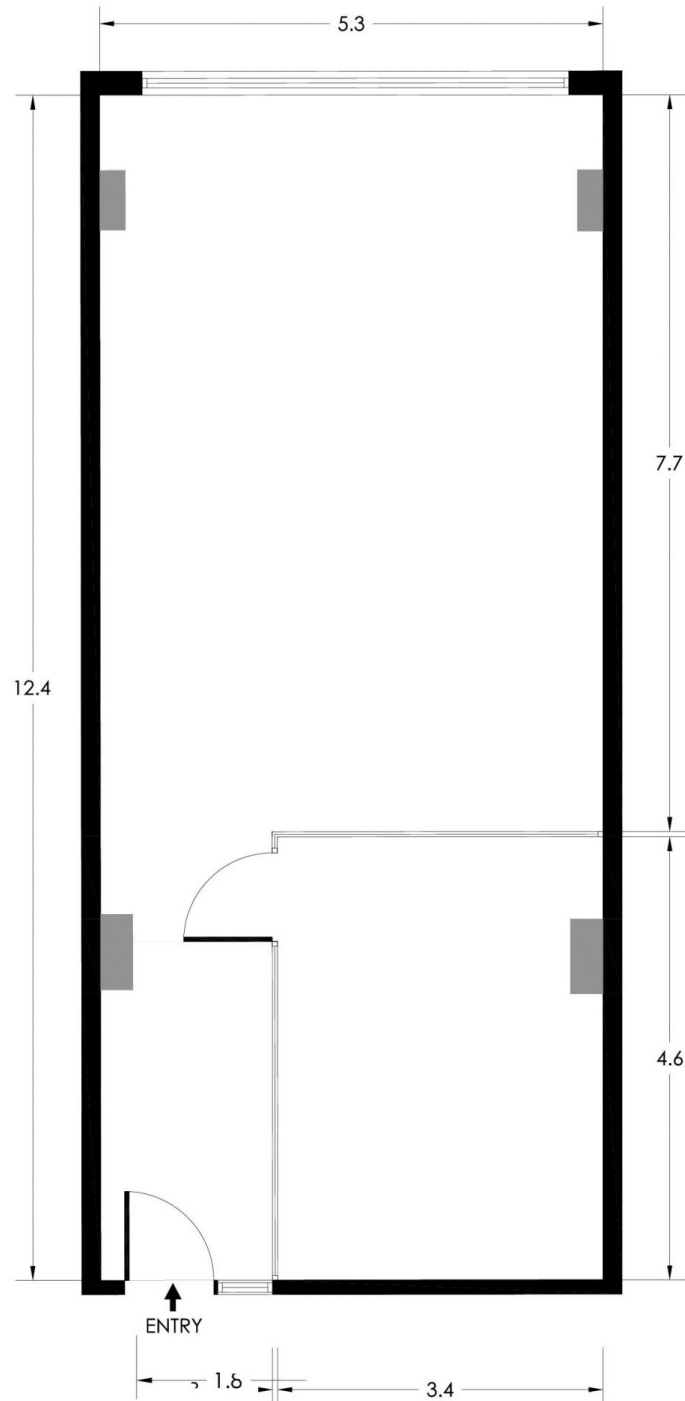
SUITE 805
109 PITT STREET, SYDNEY



*PLANS SHOWN ONLY INDICATIVE OF LAYOUT. DIMENSIONS ARE APPROXIMATE.
Floor plan supplied by V-Mark Design Pty Ltd. This floor plan is provided for indicative purposes only.
Measurements are approximate and not to scale. The vendor, agency and supplier will accept no liability for its accuracy.
Interested parties are advised to make their own independent enquiries.

NOONAN
PROPERTY

SUITE 805
109 PITT STREET, SYDNEY



*PLANS SHOWN ONLY INDICATIVE OF LAYOUT. DIMENSIONS ARE APPROXIMATE.
Floor plan supplied by V-Mark Design Pty Ltd. This floor plan is provided for indicative purposes only.
Measurements are approximate and not to scale. The vendor, agency and supplier will accept no liability for its accuracy.
Interested parties are advised to make their own independent enquiries.

NOONAN
PROPERTY