

## 12/13 Hickson Road Sydney NSW

Noonan Property has been proudly appointed to offer Suite 12, Shore Studios, 13 Hickson Road, Walsh Bay for sale.

- Absolute waterfront office with stunning views
- Set in Mirvac's acclaimed Shore Studios project
- Exclusive penthouse positioning with lift access
- Four security car spaces included on separate titles
- Vibrant, creative and distinctive commercial space
- Spectacular views overlooking Sydney Harbour
- Dual window frontages and excellent natural light
- Classic warehouse features with cathedral ceilings
- Dual level configuration with interconnecting stairs
- Bespoke fitout with recently renovated interiors
- Exposed timber beams and suspended lighting
- High ceilings maximizing light and space throughout
- Outdoor terrace looking onto Sydney Harbour Bridge
- Internal kitchen, bathroom and shower facilities

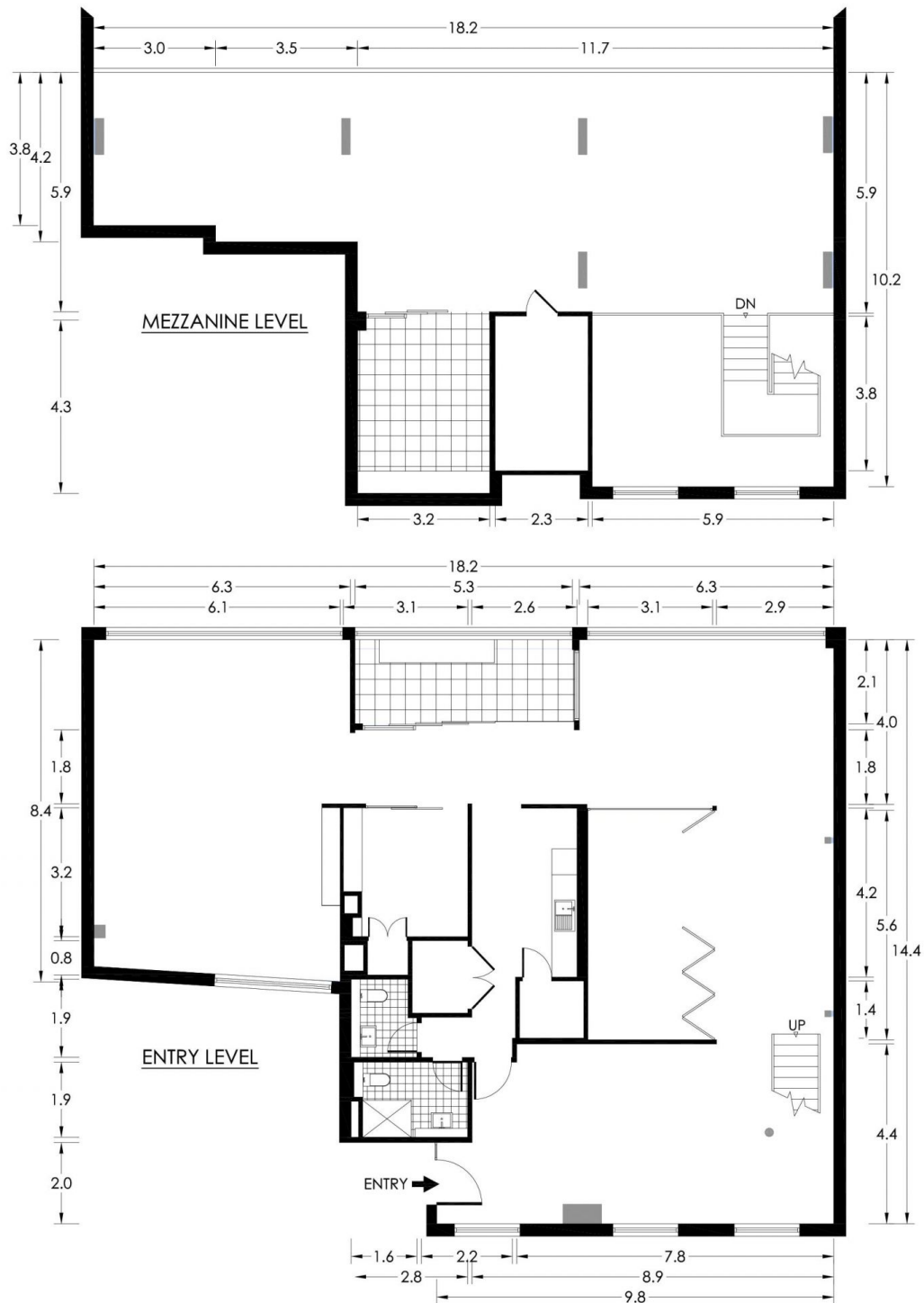
**Building Size** : 382 sqm

**View** : <https://www.noonanproperty.com.au/sale/nsw/sydney-city/sydney/commercial/offices/5999281>



**Tim Noonan**  
02 9231 6000

# SUITE 12 13 HICKSON RD, SYDNEY



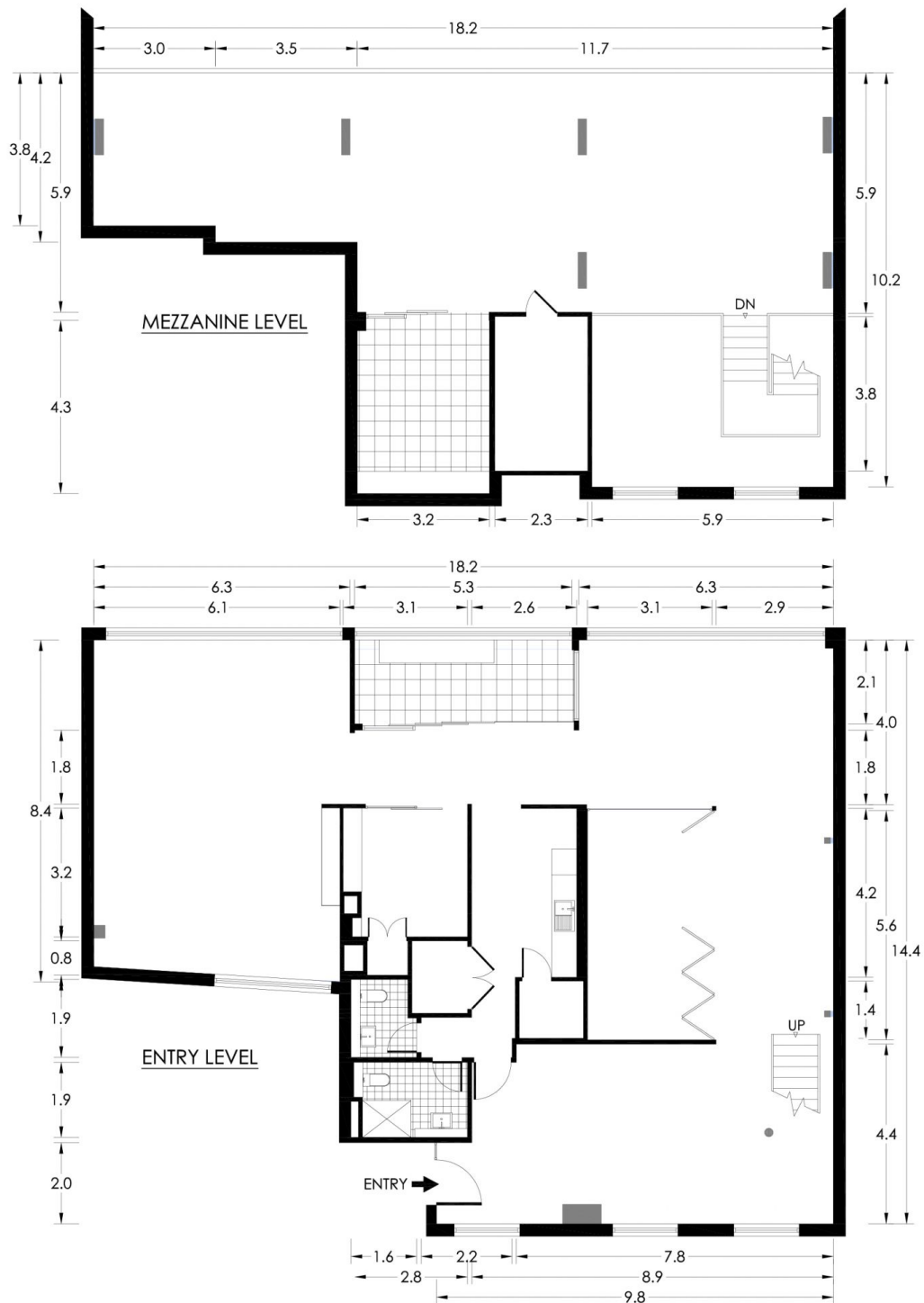
0 1 2 3 4 5  
SCALE (METRES)

\*PLANS SHOWN ONLY INDICATIVE OF LAYOUT. DIMENSIONS ARE APPROXIMATE.

Floor plan supplied by V-Mark Design Pty Ltd. This floor plan is provided for indicative purposes only. Measurements are approximate and not to scale. The vendor, agency and supplier will accept no liability for its accuracy. Interested parties are advised to make their own independent enquiries.

**NOONAN**  
**PROPERTY**

# SUITE 12 13 HICKSON RD, SYDNEY



\*PLANS SHOWN ONLY INDICATIVE OF LAYOUT. DIMENSIONS ARE APPROXIMATE.  
Floor plan supplied by V-Mark Design Pty Ltd. This floor plan is provided for indicative purposes only.  
Measurements are approximate and not to scale. The vendor, agency and supplier will accept no liability for its accuracy.  
Interested parties are advised to make their own independent enquiries.

# NOONAN PROPERTY