



99 Elizabeth Street Sydney NSW

- Highly impressive commercial space available now
- Economical rental in Sydney's most premium locale
- Rental includes electricity, cleaning and reception services
- Turnkey fitout in place including quality furniture
- Contemporary, vibrant and professional workspace
- Prime east facing position with excellent natural light
- Striking reception and client meeting/waiting area
- Two imposing boardrooms with audio visual display
- Large breakout space with kitchen and dishwasher
- Prominent and distinctive commercial building
- Impressive main lobby area with a digital directory
- Quality building services including four lifts
- Blue ribbon location near Martin Place and Hyde Park
- Surrounded by Sydney's best cafes and restaurants

Building Size : 250 sqm

View : <https://www.noonanproperty.com.au/lease/nsw/sydney-city/sydney/commercial/offices/5999282>



Tim Noonan
02 9231 6000

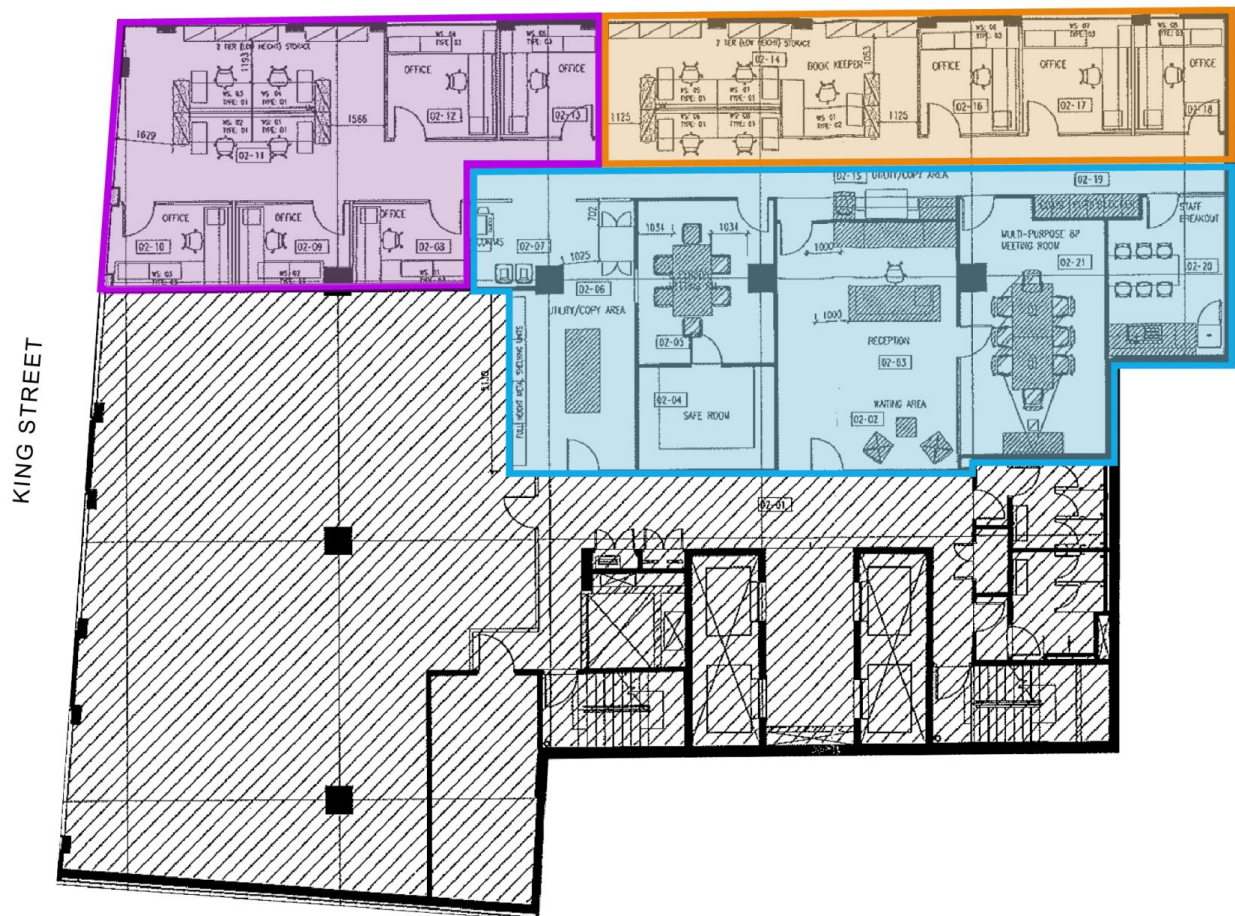
Size - 250 sqm approx.

LEVEL 2

99 ELIZABETH STREET, SYDNEY



ELIZABETH STREET



LEGEND

- COMMON AREA - 180 SQM APPROX.
- AVAILABLE FOR LEASE - 70 SQM APPROX.
- LEASED / OCCUPIED - 80 SQM APPROX.

*PLANS SHOWN ONLY INDICATIVE OF LAYOUT. This floor plan is provided for indicative purposes only. Measurements are approximate and not to scale. The vendor, agency and supplier will accept no liability for its accuracy. Interested parties are advised to make their own independent enquiries.

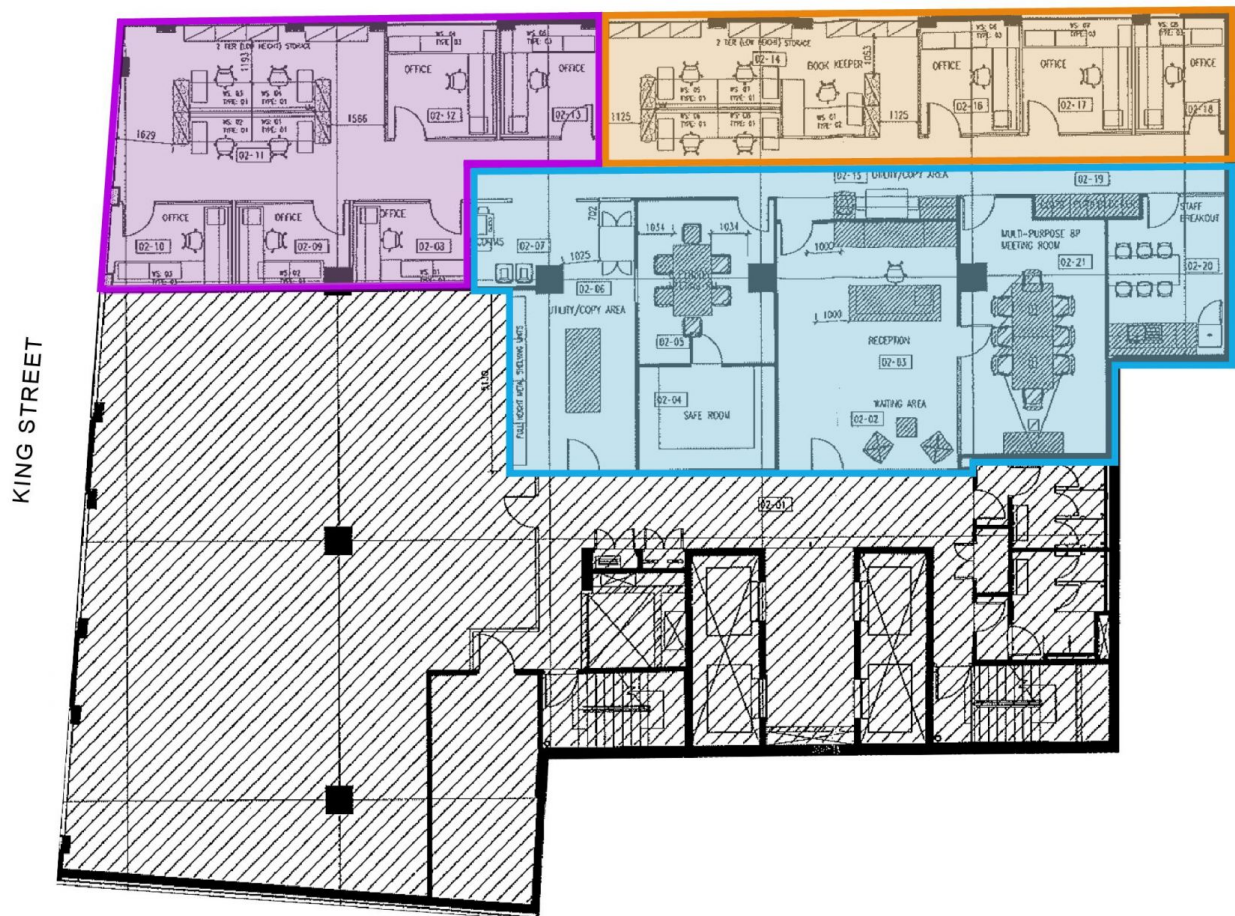
NOONAN
PROPERTY

LEVEL 2

99 ELIZABETH STREET, SYDNEY



ELIZABETH STREET



LEGEND

- COMMON AREA - 180 SQM APPROX.
- AVAILABLE FOR LEASE - 70 SQM APPROX.
- LEASED / OCCUPIED - 80 SQM APPROX.

*PLANS SHOWN ONLY INDICATIVE OF LAYOUT. This floor plan is provided for indicative purposes only. Measurements are approximate and not to scale. The vendor, agency and supplier will accept no liability for its accuracy. Interested parties are advised to make their own independent enquiries.

NOONAN
PROPERTY