



## 301/50 Clarence Street Sydney NSW

- Modern and impressive commercial suite
- Stylish, professional and efficient workspace
- Large windows and excellent natural light
- Quality fitout included with renewed finishes
- Mixture of offices and open plan workspaces
- Onsite shower and change room facilities
- Modern and prominent commercial building
- Striking main lobby area with three lifts
- Surrounded by popular restaurants and bars
- Directly adjacent to Wynyard Walk Station
- Close to Martin Place and Barangaroo

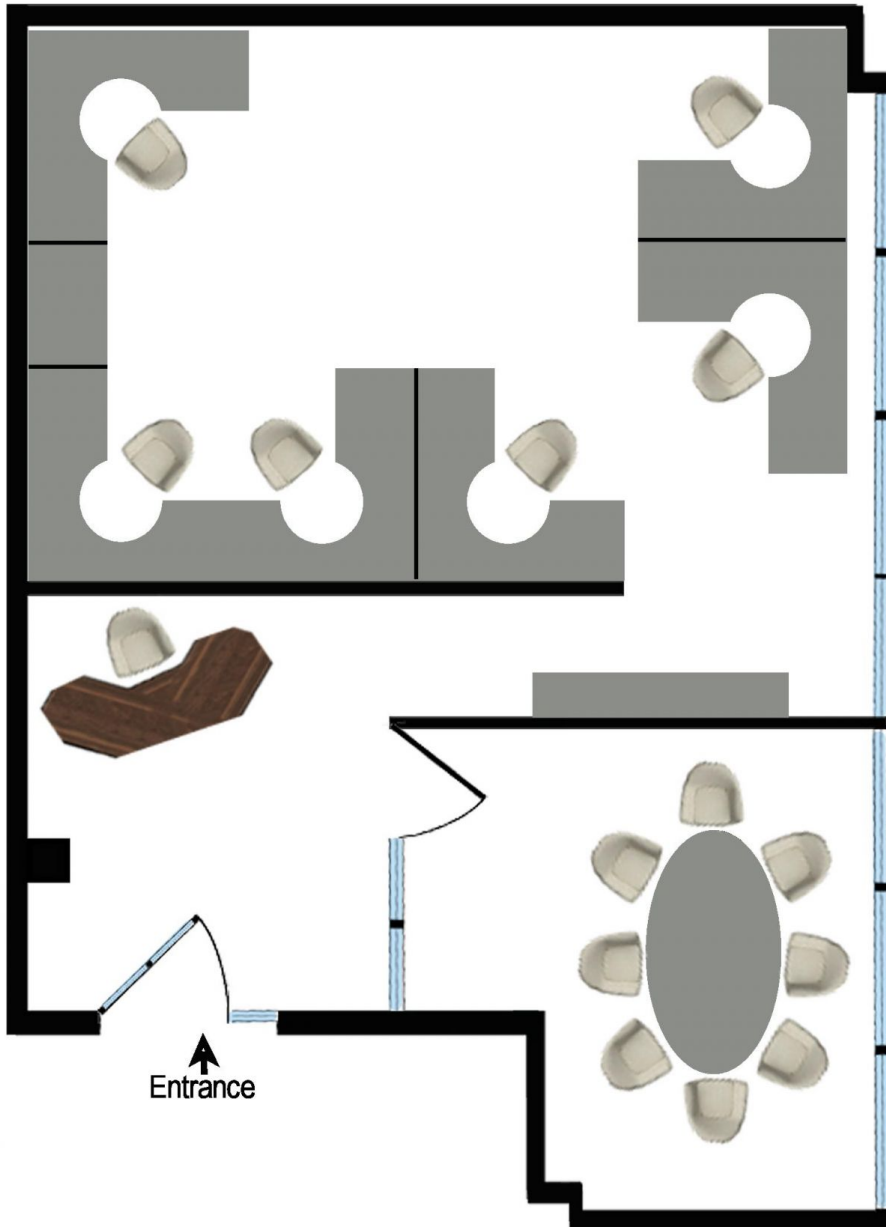
50 Clarence Street is a high quality commercial building in a superb location near Wynyard Station. This high profile position is a leading business address and a significant growth precinct due to its close proximity to the new and exciting Barangaroo and Wynyard Walk developments.

**Building Size** : 76 sqm  
**View** : <https://www.noonanproperty.com.au/lease/nsw/sydney-city/sydney/commercial/offices/5999286>



**Tim Noonan**  
**02 9231 6000**

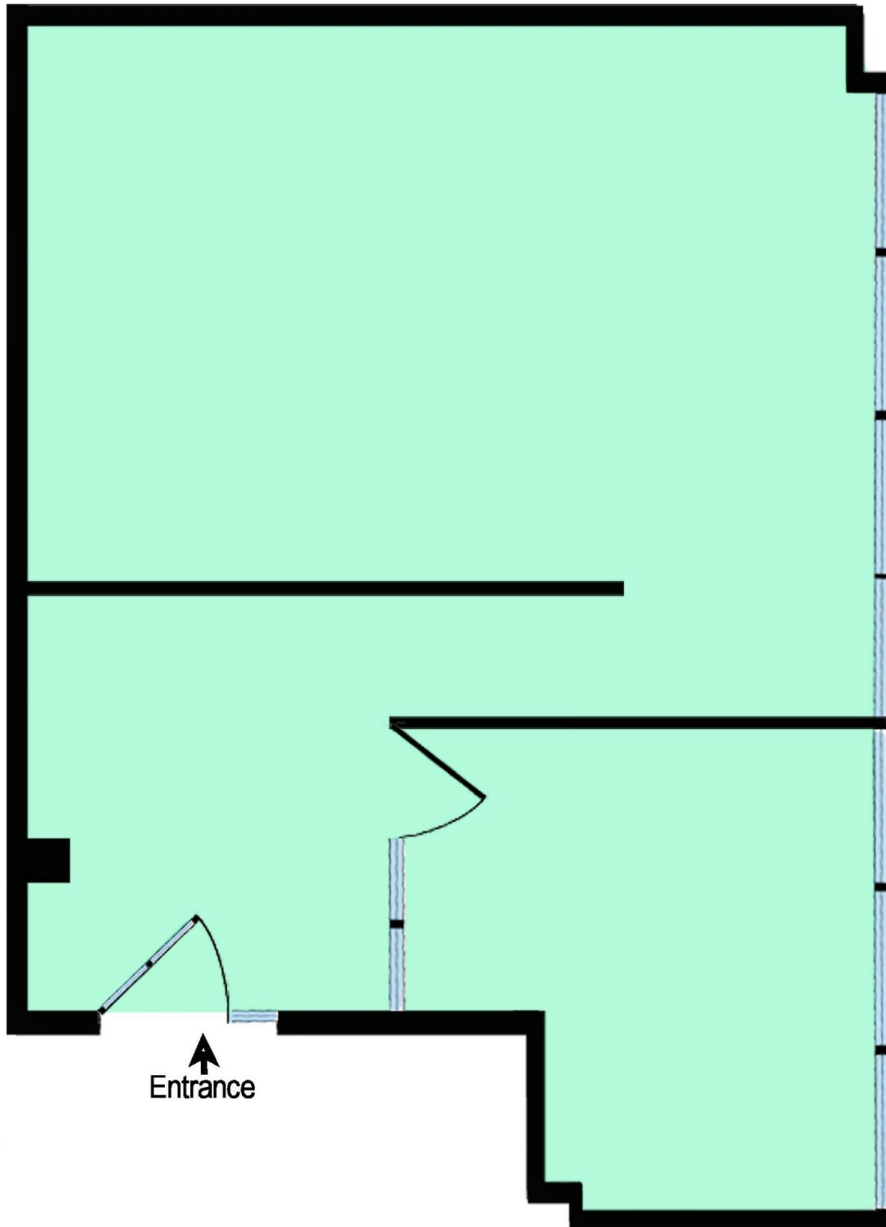
# Suite 301, Level 3 50 Clarence Street SYDNEY



**Office Area: 76.3 sqm**

This floor plan is intended as a guide only. Layout dimensions are approximate only. No representation or warranties of any nature whatsoever are given or intended. Any person using this information should rely on their own enquiries.

# Suite 301, Level 3 50 Clarence Street SYDNEY



**Office Area: 76.3 sqm**

This floor plan is intended as a guide only. Layout dimension are approximate only. No representation or warranties of any nature whatsoever are given or intended. Any person using this information should rely on their own enquiries.