



267 Castlereagh Street Sydney NSW

Noonan Property has been exclusively appointed to offer Suite 603, Museum Towers, 267 Castlereagh Street, Sydney for sale.

- Stylish commercial suite with modern interiors
- Impressive, vibrant and professional workspace
- Secure and easily accessible car space included
- Quality fitout with industrial inspired designs
- High ceilings and pendant lighting throughout
- Polished concrete floors and exposed services
- Mixture of formal and informal meeting areas
- Separate boardroom with audio visual display
- Private balcony overlooking Castlereagh Street
- Expansive east facing windows and excellent light
- Prominent building with onsite concierge services
- Pool, gym, squash court, sauna and spa available
- Prime location near Hyde Park and World Square

Building Size : 105 sqm
View : <https://www.noonanproperty.com.au/sale/nsw/sydney-city/sydney/commercial/offices/5999287>

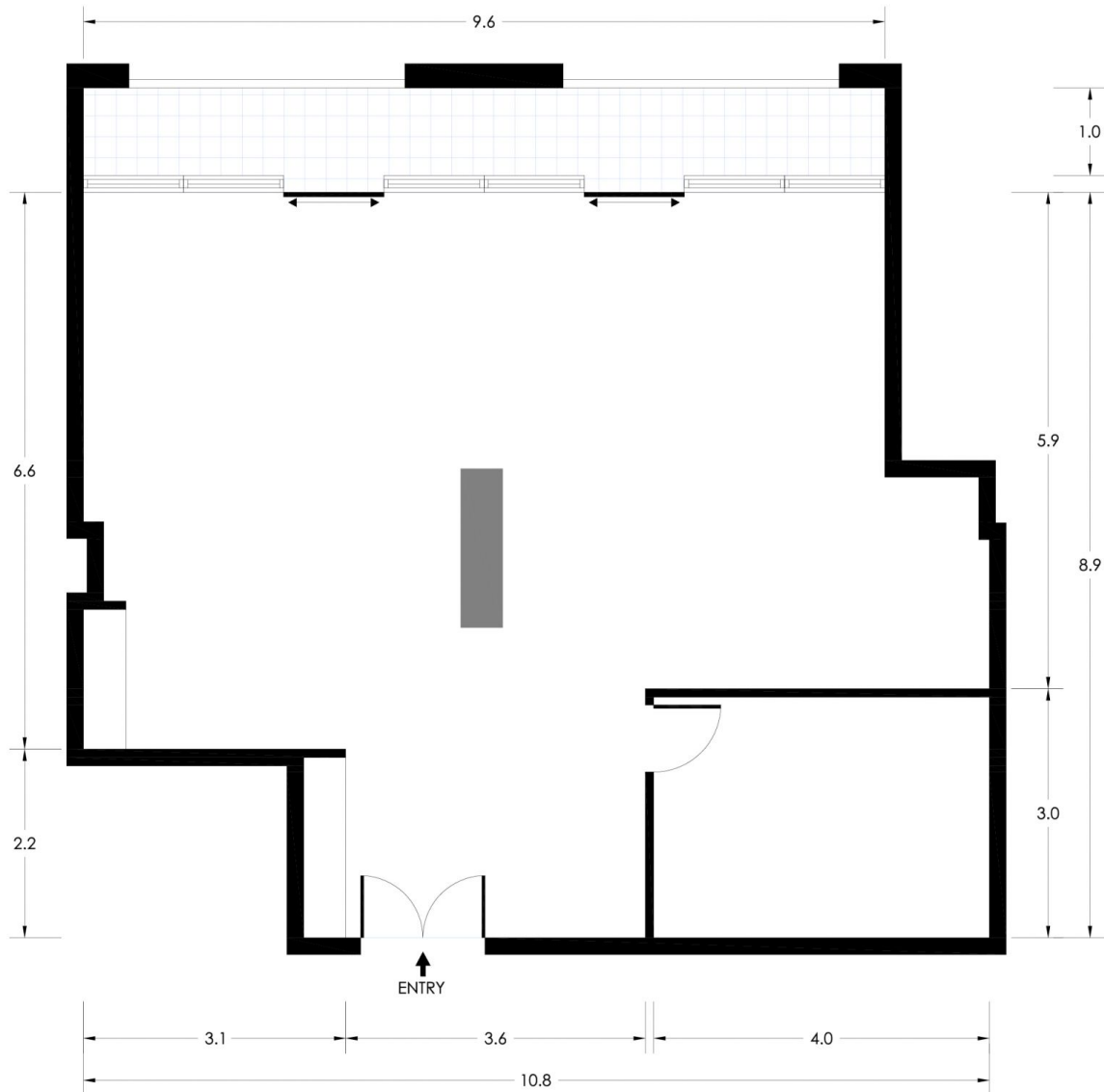


Tim Noonan
02 9231 6000



Ben Kennedy
0449 286 129

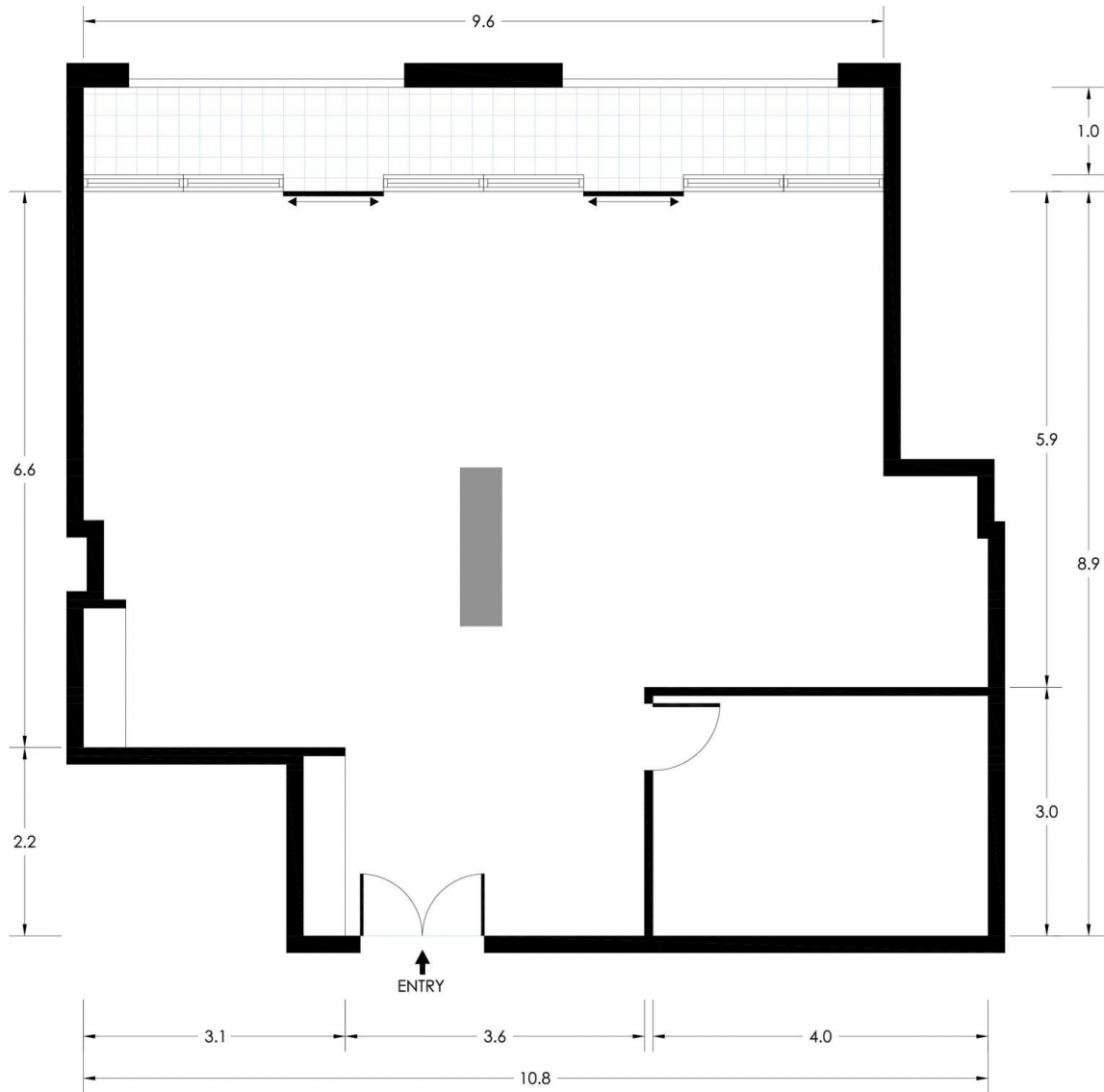
SUITE 603 276 CASTLEREAGH STREET, SYDNEY



*PLANS SHOWN ONLY INDICATIVE OF LAYOUT. DIMENSIONS ARE APPROXIMATE.
This floor plan is provided for indicative purposes only. Measurements are approximate and not to scale. The vendor, agency and supplier will accept no liability for its accuracy. Interested parties are advised to make the own independent enquiries.

NOONAN
PROPERTY

SUITE 603
276 CASTLEREAGH STREET, SYDNEY



*PLANS SHOWN ONLY INDICATIVE OF LAYOUT. DIMENSIONS ARE APPROXIMATE.
This floor plan is provided for indicative purposes only. Measurements are approximate and not to scale. The vendor, agency and supplier will accept no liability for its accuracy. Interested parties are advised to make the own independent enquiries.

NOONAN
PROPERTY