



1/225 Macquarie Street Sydney NSW

Noonan Property has been exclusively appointed to offer Suite 1, Windeyer Chambers, 225 Macquarie Street, Sydney for sale.

- Contemporary and ultra-impressive commercial space
- Exclusive lower ground positioning with direct access
- Situated in one of Sydney's most esteemed buildings
- Immaculate fitout with modern and bespoke interiors
- Combination of offices, meeting rooms and workspaces
- Striking main reception and spacious client waiting area
- Large and imposing boardrooms with audio visual display
- Flexible layout suitable for a variety of business types
- Custom built kitchen facilities with marble bench tops
- Popular and prestigious commercial building with 3 lifts
- Renewed glass facade designed by Growthbuilt Architects
- Prime location near Martin Place and Queen's Square

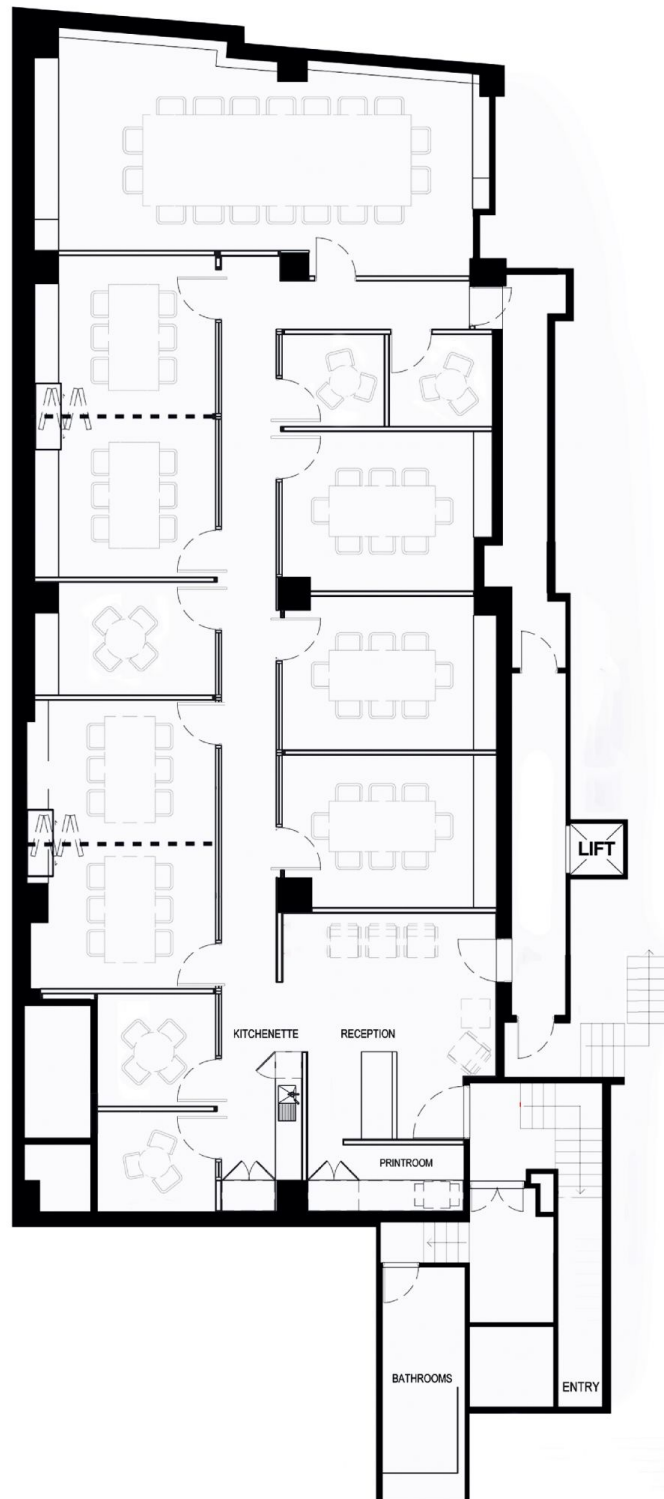
Building Size : 285 sqm

View : <https://www.noonanproperty.com.au/sale/nsw/sydney-city/sydney/commercial/offices/5999288>



Tim Noonan
02 9231 6000

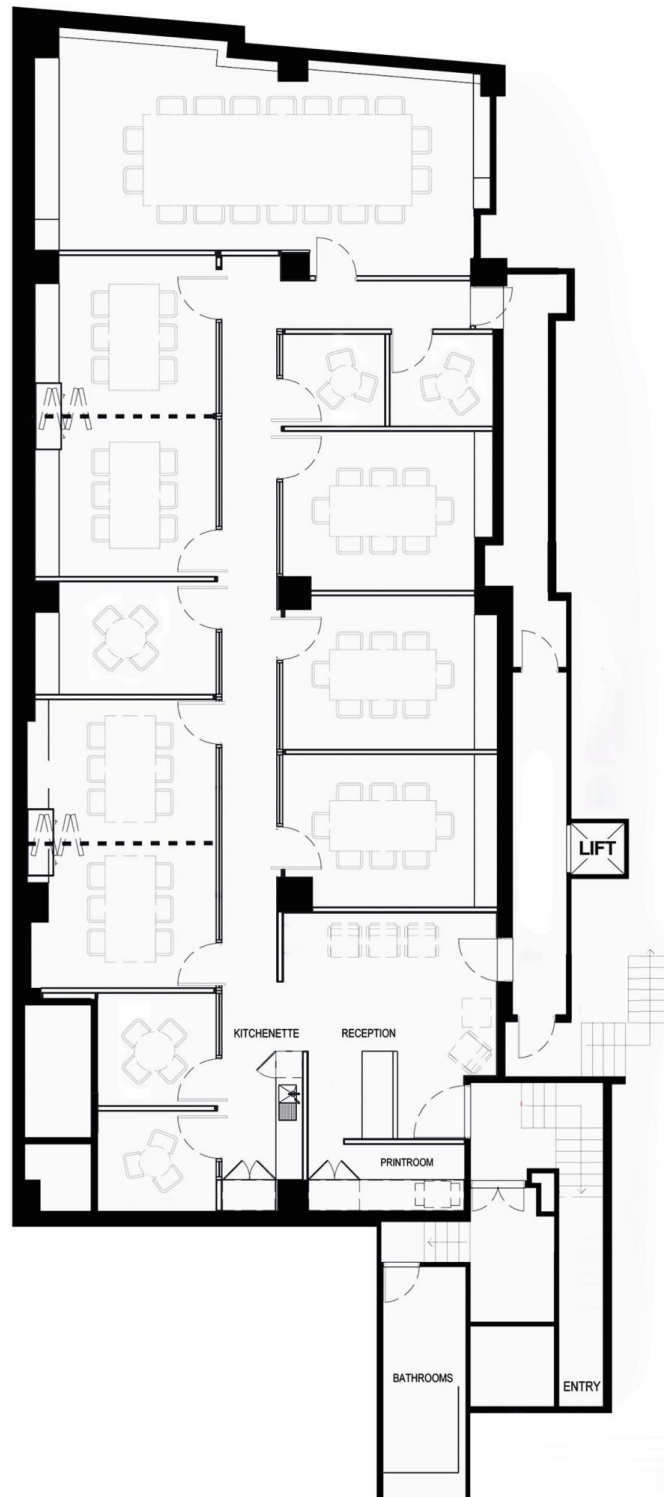
SUITE 1
225 MACQUARIE STREET, SYDNEY



*PLANS SHOWN ONLY INDICATIVE OF LAYOUT. DIMENSIONS ARE APPROXIMATE.
This floor plan is provided for indicative purposes only.
Measurements are approximate and not to scale.
The vendor, agency and supplier will accept no liability for its accuracy.
Interested parties are advised to make their own independent enquiries.

NOONAN
PROPERTY

SUITE 1
225 MACQUARIE STREET, SYDNEY



*PLANS SHOWN ONLY INDICATIVE OF LAYOUT. DIMENSIONS ARE APPROXIMATE.

This floor plan is provided for indicative purposes only.

Measurements are approximate and not to scale.

The vendor, agency and supplier will accept no liability for its accuracy.

Interested parties are advised to make their own independent enquiries.

NOONAN
PROPERTY