



706/65 York Street Sydney NSW

- Premium commercial suite with Art Deco charm
- Set in one of Sydney's most admired buildings
- Professional, impressive and efficient workspace
- Envious corner positioning with excellent light
- Three window frontages spanning 28m approx.
- Stylish and functional fitout with high ceilings
- Mixture of offices and open plan work spaces
- Internal kitchen facilities and integrated storage
- Flexible layout suitable for variety of businesses
- Easy access to male & female bathroom amenities
- Stately building with an imposing street presence
- Exquisite Art Deco Palazzo style built circa 1930
- Striking main lobby area with high spec finishes
- Quality services including 3 newly renovated lifts
- Excellent location near Wynyard and Barangaroo
- Close to Martin Place and George Street Light Rail
- Walking distance to Circular Quay and Town Hall

Building Size : 123 sqm

View : <https://www.noonanproperty.com.au/sale/nsw/sydney-city/sydney/commercial/offices/5999293>

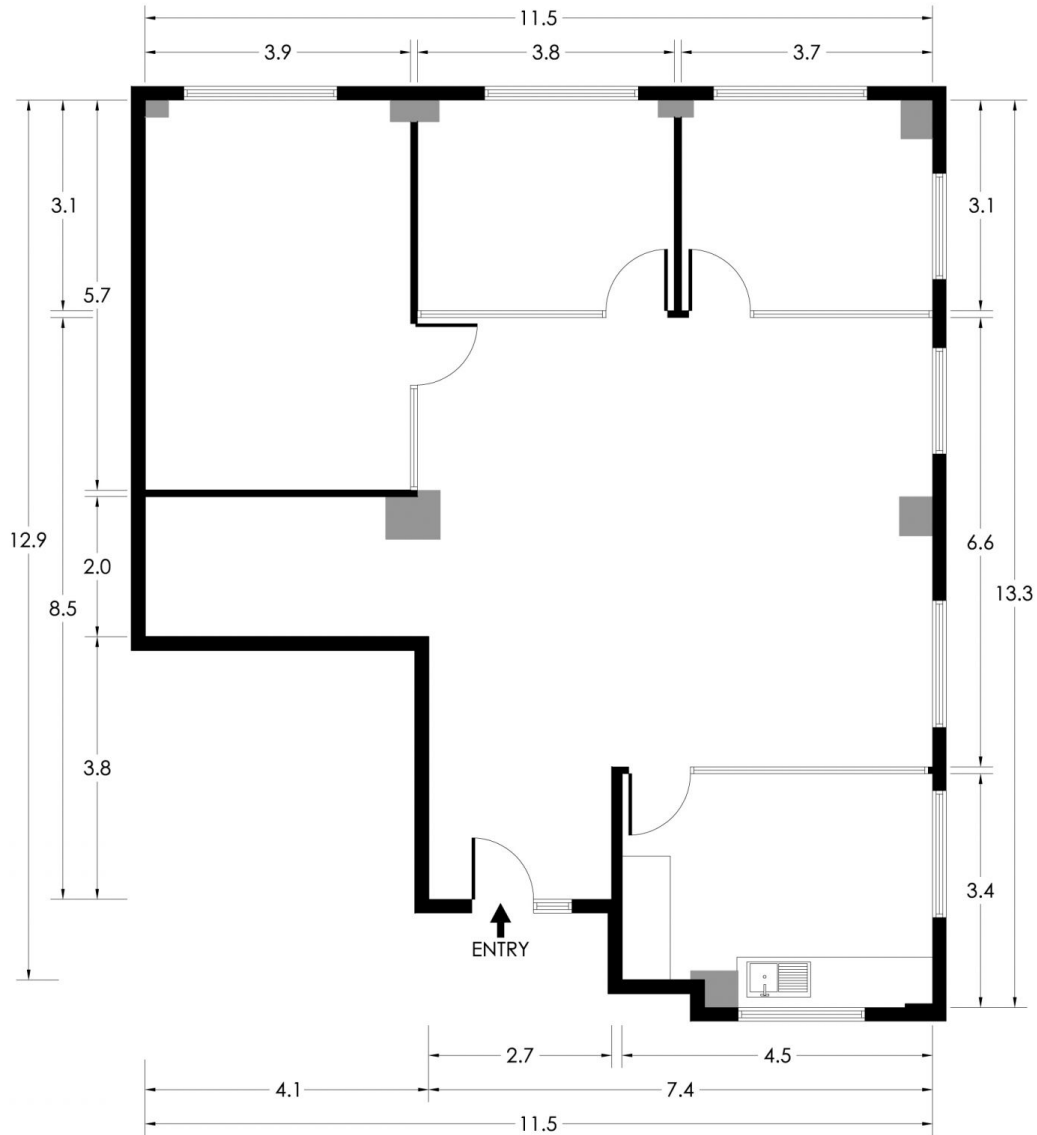


Tim Noonan
02 9231 6000



Ben Kennedy
0449 286 129

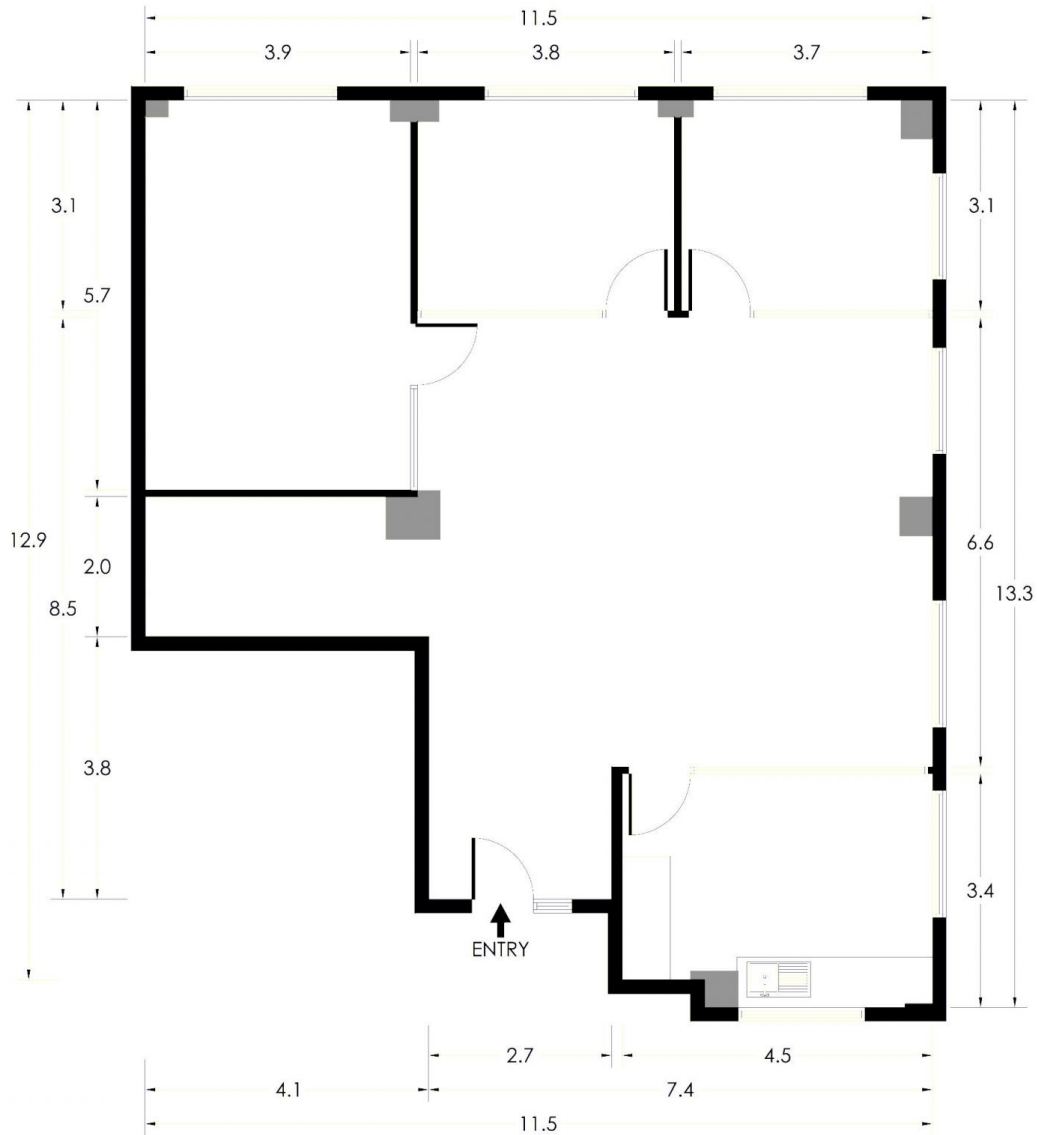
SUITE 706 65 YORK STREET SYDNEY



*PLANS SHOWN ONLY INDICATIVE OF LAYOUT. DIMENSIONS ARE APPROXIMATE.
Floor plan supplied by V-Mark Design Pty Ltd. This floor plan is provided for indicative purposes only.
Measurements are approximate and not to scale. The vendor, agency and supplier will accept no liability
for its accuracy. Interested parties are advised to make their own independent enquiries.

NOONAN PROPERTY

SUITE 706 65 YORK STREET SYDNEY



*PLANS SHOWN ONLY INDICATIVE OF LAYOUT. DIMENSIONS ARE APPROXIMATE.
Floor plan supplied by V-Mark Design Pty Ltd. This floor plan is provided for indicative purposes only.
Measurements are approximate and not to scale. The vendor, agency and supplier will accept no liability
for its accuracy. Interested parties are advised to make their own independent enquiries.

NOONAN PROPERTY