

## 17/300 George Street Sydney NSW

- Boutique commercial premises opposite Wynyard
- Ideal for massage or healthcare related businesses
- Quality fitout with treatment and consulting rooms
- Well presented with stylish finishes throughout
- Timber floors, halogen lighting and Venetian blinds
- Multiple water basins with integrated storage
- Attractive views overlooking the 'new' George St
- Easy access to male and female bathroom facilities
- Direct lift lobby exposure with a sliding glass door
- Prominent CBD commercial building with two lifts
- Landmark location in Sydney's core financial hub
- Opposite the exciting Wynyard Place development
- Close to Circular Quay, Martin Place and Barangaroo

Size - 48 sqm approx.

Rental - \$650/m2 gross per annum plus GST

**Building Size** : 48 sqm

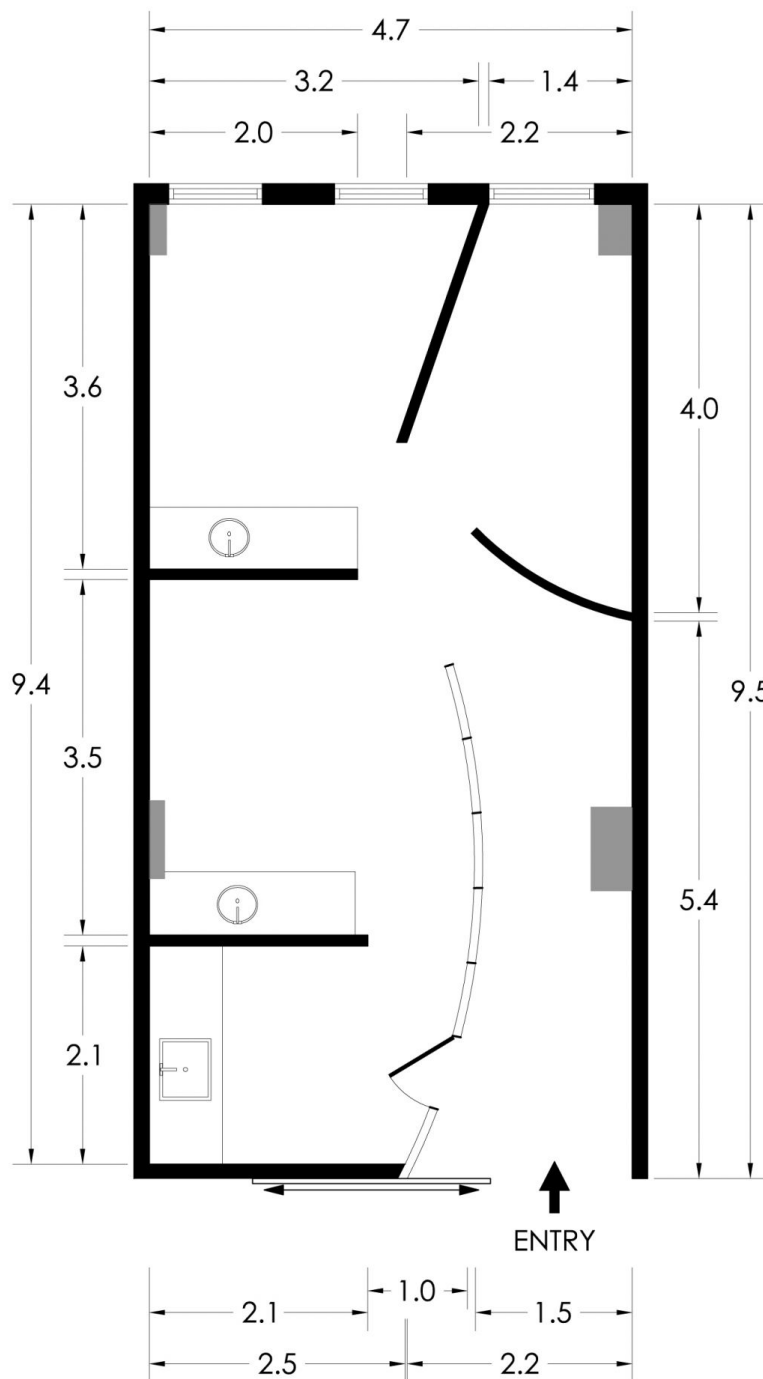
**View** : <https://www.noonanproperty.com.au/lease/nsw/sydney-city/sydney/commercial/healthcare/5999301>



**Tim Noonan**  
**02 9231 6000**



# SUITE 17 300 GEORGE STREET SYDNEY

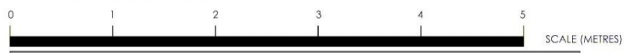
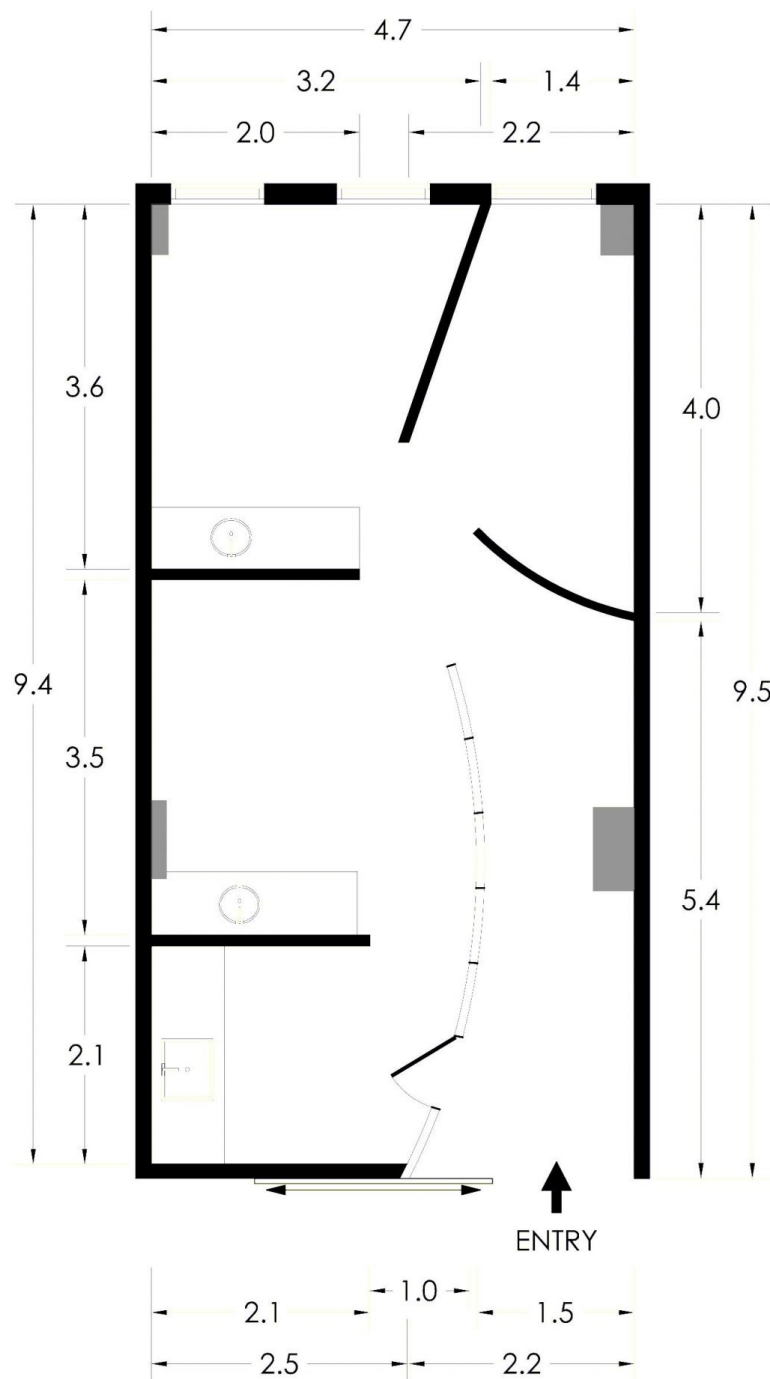


\*PLANS SHOWN ONLY INDICATIVE OF LAYOUT. DIMENSIONS ARE APPROXIMATE.  
Floor plan supplied by V-Mark Design Pty Ltd. This floor plan is provided for indicative purposes only.  
Measurements are approximate and not to scale. The vendor, agency and supplier will accept no liability  
for its accuracy. Interested parties are advised to make their own independent enquiries.

**NOONAN**  
**PROPERTY**



# SUITE 17 300 GEORGE STREET SYDNEY



\*PLANS SHOWN ONLY INDICATIVE OF LAYOUT. DIMENSIONS ARE APPROXIMATE.  
Floor plan supplied by V-Mark Design Pty Ltd. This floor plan is provided for indicative purposes only.  
Measurements are approximate and not to scale. The vendor, agency and supplier will accept no liability  
for its accuracy. Interested parties are advised to make their own independent enquiries.

**NOONAN**  
**PROPERTY**