



## 801/229 Macquarie Street Sydney NSW

- Superbly renovated office suite with harbour views
- East facing with large windows and excellent light
- Stylishly presented throughout with modern finishes
- Overlooking Sydney Harbour and Parliament House
- Custom built meeting table, cupboards and shelving
- Internal kitchen facilities with integrated storage
- Ducted self-controlled ducted air conditioning system
- Popular and prestigious commercial building with 2 lifts
- Prime location near Martin Place and Queen's Square
- Surrounded by an array of quality restaurants and cafes
- Minutes to St James Station, Wynyard and Circular Quay
- Opposite Sydney Hospital and the Sydney Eye Hospital
- Close to Hyde Park, NSW Parliament and The Domain
- Handy to Martin Place Metro and George St Light Rail

**Building Size** : 51 sqm

**View** : <https://www.noonanproperty.com.au/lease/nsw/sydney-city/sydney/commercial/offices/5999305>



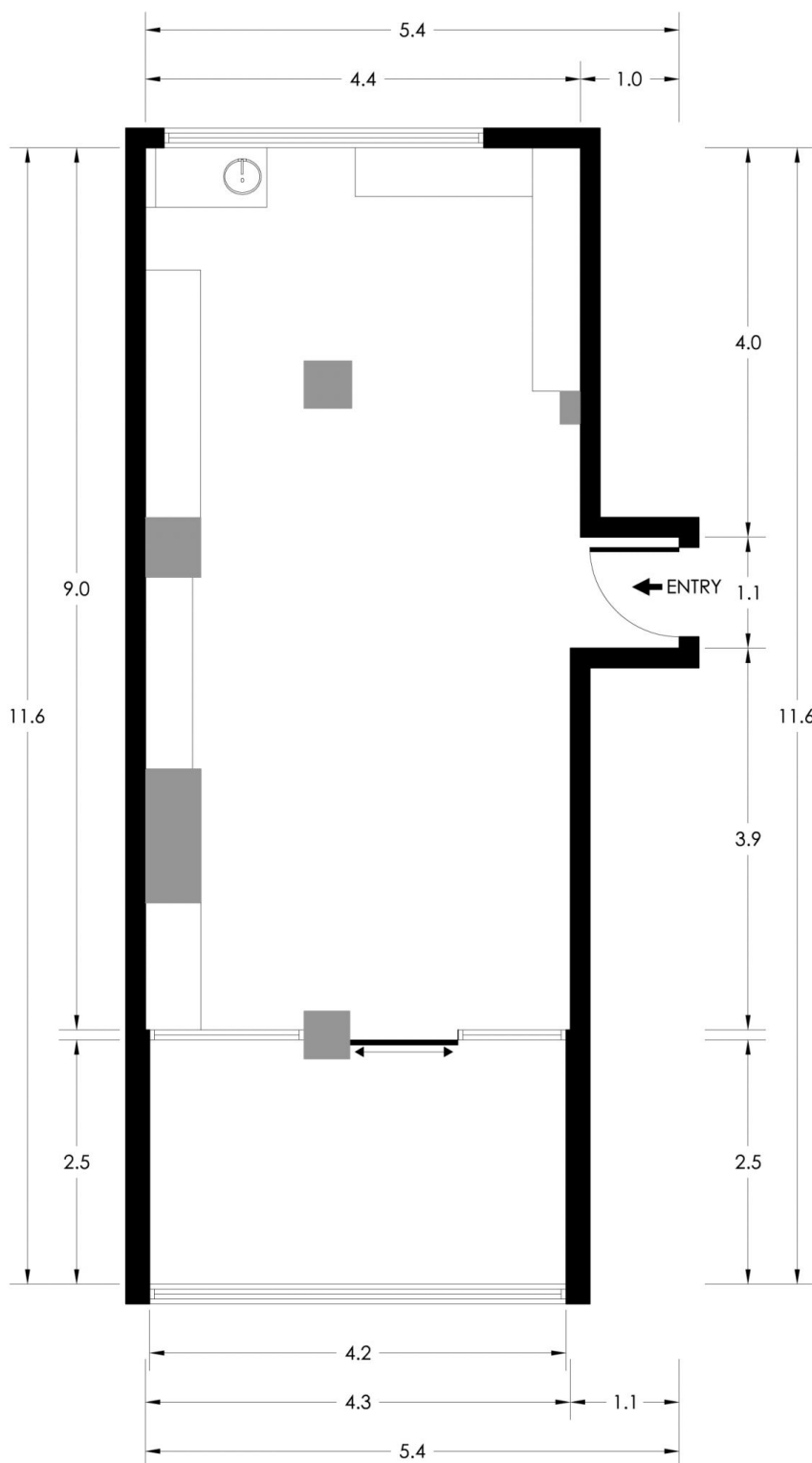
**Tim Noonan**  
02 9231 6000



**Ben Kennedy**  
0449 286 129

Size - 51 sqm approx.

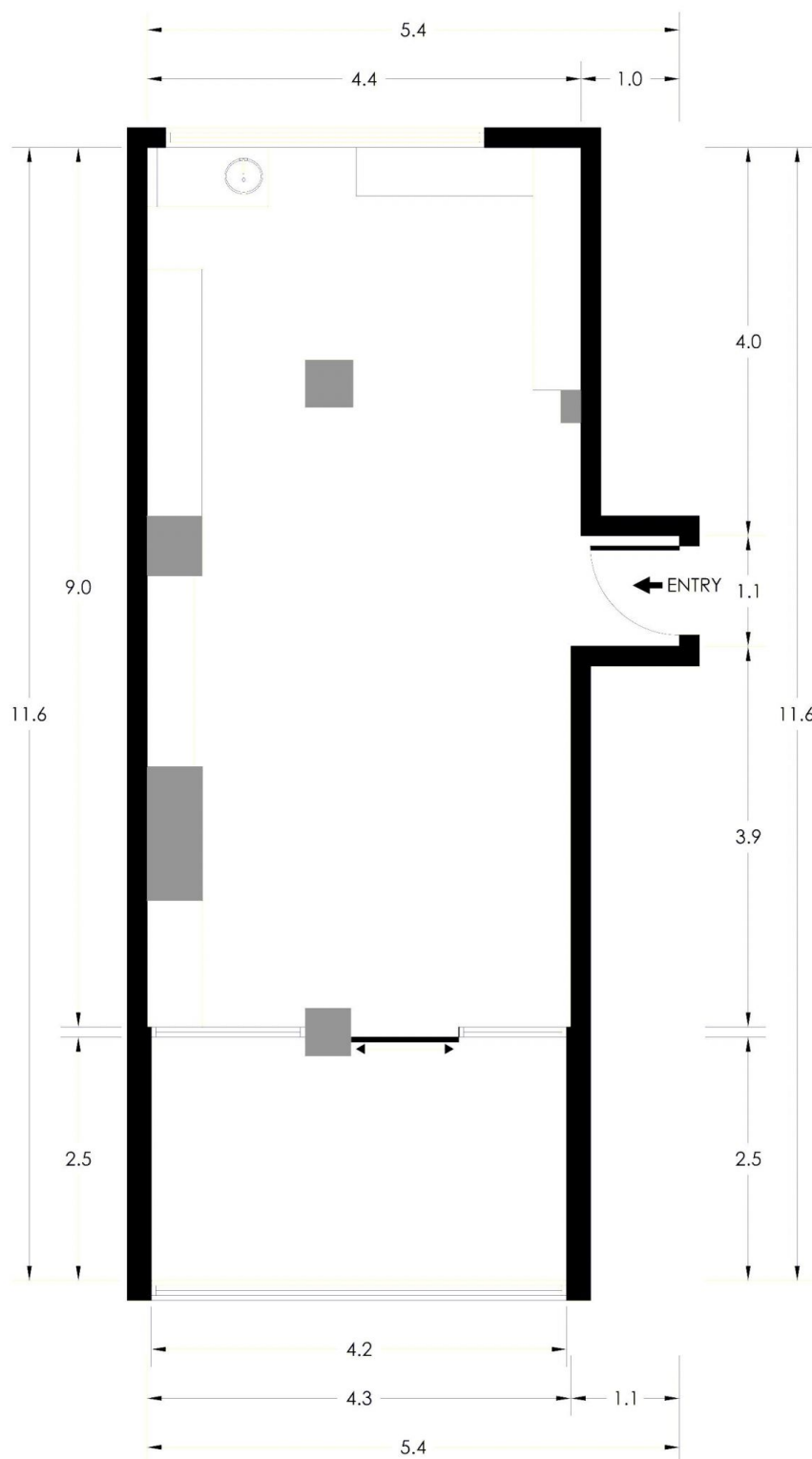
# SUITE 801 229 MACQUARIE STREET SYDNEY



\*PLANS SHOWN ONLY INDICATIVE OF LAYOUT. DIMENSIONS ARE APPROXIMATE.  
Floor plan supplied by V-Mark Design Pty Ltd. This floor plan is provided for indicative purposes only.  
Measurements are approximate and not to scale. The vendor, agency and supplier will accept no liability

**NOONAN**  
**PROPERTY**

# SUITE 801 229 MACQUARIE STREET SYDNEY



\*PLANS SHOWN ONLY INDICATIVE OF LAYOUT. DIMENSIONS ARE APPROXIMATE.  
Floor plan supplied by V-Mark Design Pty Ltd. This floor plan is provided for indicative purposes only.  
Measurements are approximate and not to scale. The vendor, agency and supplier will accept no liability

**NOONAN**  
**PROPERTY**