



1605/109 Pitt Street Sydney NSW

- High quality and prestigious office suite
- Premium building with excellent services
- Exclusive CBD address near Martin Place
- Highrise positioning and great natural light
- Recently refurbished with quality finishes
- North facing views across the CBD skyline
- Efficient and easily subdividable layout
- Internal kitchen facilities with dishwasher
- Direct and prominent lift lobby exposure
- Modern and popular commercial building
- Retail amenities available at ground level
- Striking main lobby with 6 high speed lifts
- Easy access to on-floor bathroom facilities
- Onsite car parking and showers available
- Superb location in core financial precinct
- Undercover pedestrian access to Wynyard
- Short walk to Circular Quay & Barangaroo

Building Size : 65 sqm

View : <https://www.noonanproperty.com.au/lease/nsw/sydney-city/sydney/commercial/offices/5999320>

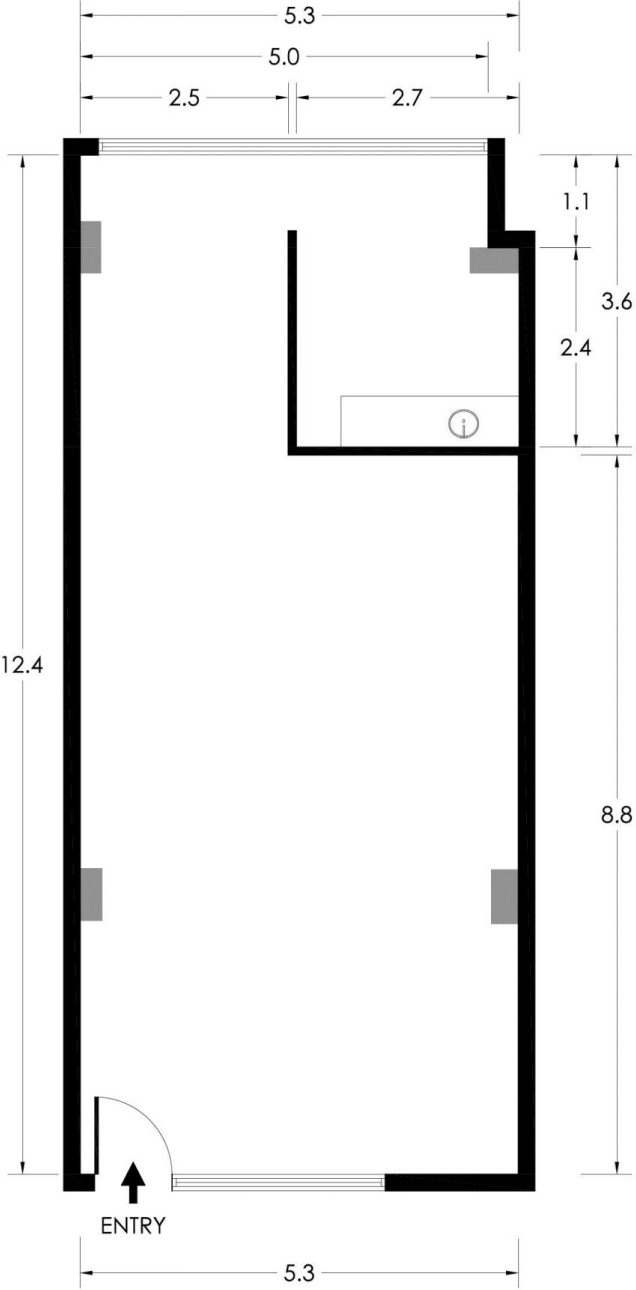


Tim Noonan
02 9231 6000



Ben Kennedy
0449 286 129

SUITE 1605
109 PITT STREET, SYDNEY



*PLANS SHOWN ONLY INDICATIVE OF LAYOUT. DIMENSIONS ARE APPROXIMATE.
Floor plan supplied by V-Mark Design Pty Ltd. This floor plan is provided for indicative purposes only.
Measurements are approximate and not to scale. The vendor, agency and supplier will accept no liability
for its accuracy. Interested parties are advised to make their own independent enquiries.

NOONAN
PROPERTY