



6 Bridge Street Sydney NSW

- Prestigious whole floor commercial office
- Contemporary, elegant and inspired workspace
- Perfectly presented with bespoke interiors
- Floor to ceiling glass partitioning throughout
- Exclusive outdoor terrace with bench seating
- Impressive reception and boardroom areas
- 8 individual offices plus open plan workspaces
- High ceilings and herringbone parquet floors
- Pendant lighting and integrated storage space
- Direct lift access opening onto a private lobby
- Internal kitchen facilities including a dishwasher
- Two internal bathrooms with shower facilities
- Prestigious sandstone Heritage building c1885
- Blue ribbon location adjoining the ASX Centre
- Walking distance to Wynyard & Circular Quay
- Only 50 metres from George Street Light Rail
- Close to Botanic Gardens and Martin Place

Building Size : 242 sqm
Land Size : 242 sqm
View : <https://www.noonanproperty.com.au/lease/nsw/sydney-city/sydney/commercial/offices/6027156>

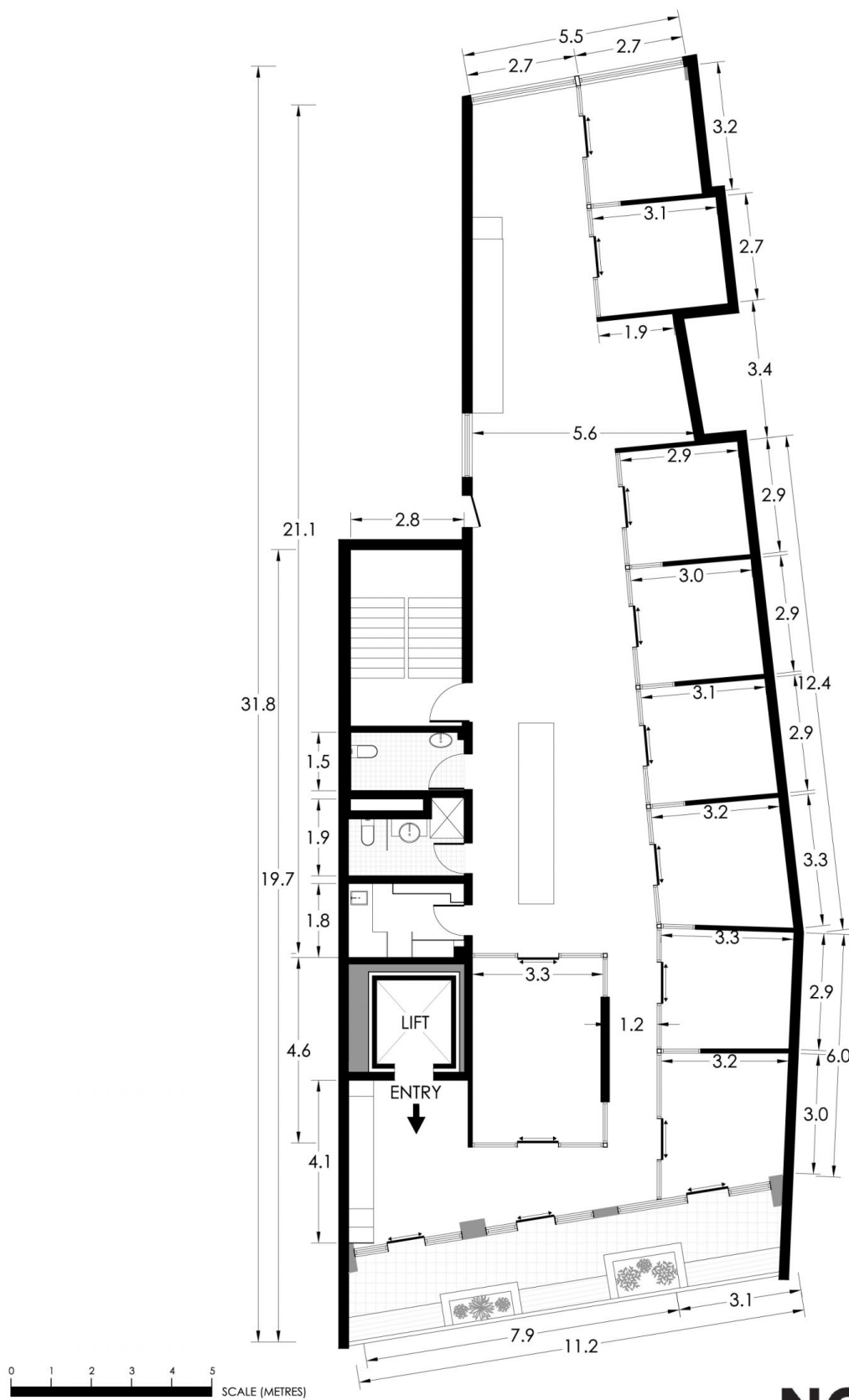


Tim Noonan
02 9231 6000



Ben Kennedy
0449 286 129

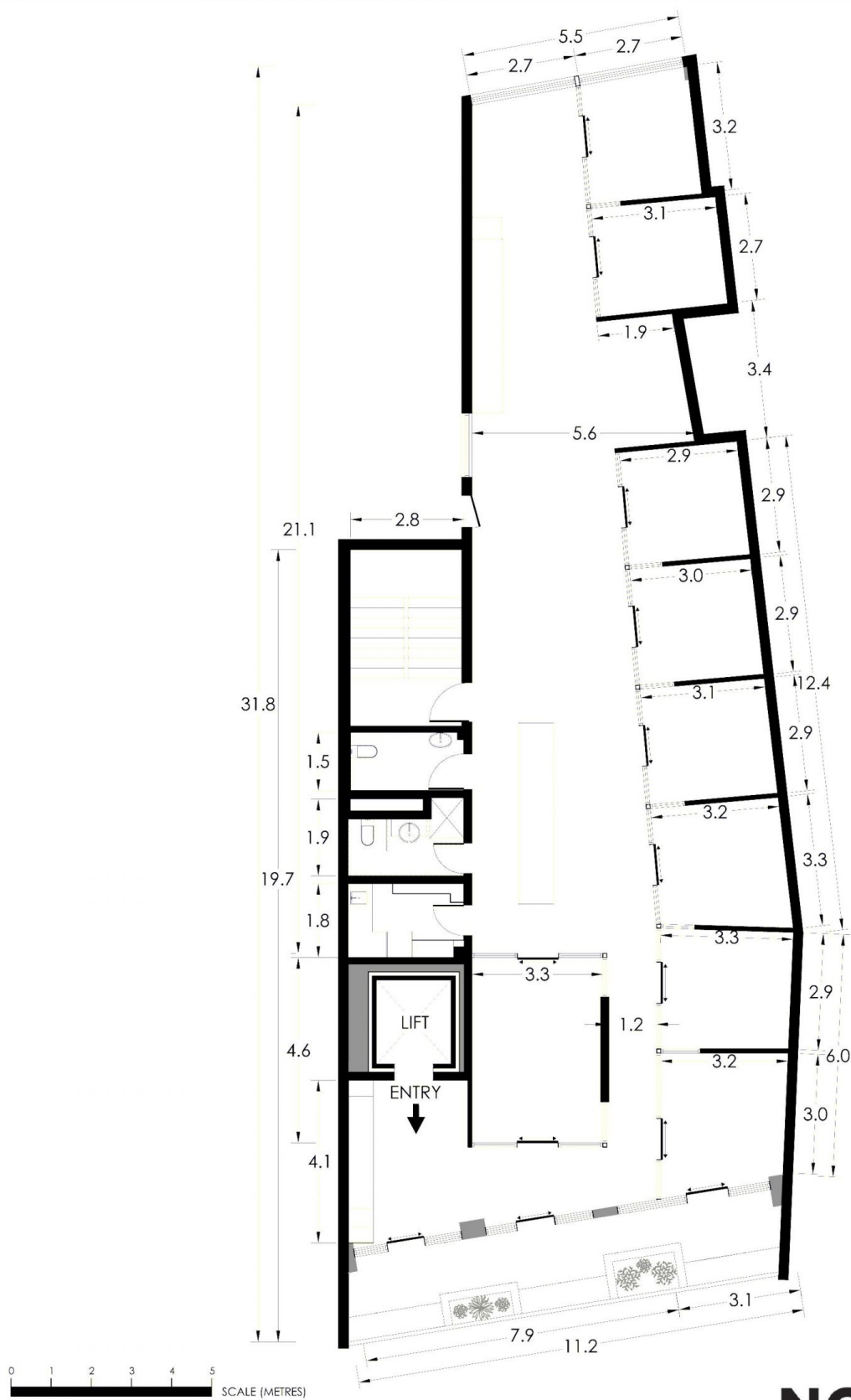
SUITE 4 6 BRIDGE STREET SYDNEY



*PLANS SHOWN ONLY INDICATIVE OF LAYOUT. DIMENSIONS ARE APPROXIMATE.
 Floor plan supplied by V-Mark Design Pty Ltd. This floor plan is provided for indicative purposes only.
 Measurements are approximate and not to scale. The vendor, agency and supplier will accept no liability
 for its accuracy. Interested parties are advised to make their own independent enquiries.

NOONAN
PROPERTY

SUITE 4 6 BRIDGE STREET SYDNEY



*PLANS SHOWN ONLY INDICATIVE OF LAYOUT. DIMENSIONS ARE APPROXIMATE.
Floor plan supplied by V-Mark Design Pty Ltd. This floor plan is provided for indicative purposes only.
Measurements are approximate and not to scale. The vendor, agency and supplier will accept no liability
for its accuracy. Interested parties are advised to make their own independent enquiries.

NOONAN
PROPERTY