



## 902/65 York Street Sydney NSW

- Premium commercial suite with Art Deco charm
- Set in one of Sydney's most esteemed buildings
- Impressive, professional and modern workspace
- Highrise positioning with excellent natural light
- North facing with beautiful tree line park views
- Stylish fitout with full height glass partitioning
- Modish reception with direct boardroom access
- Three large offices plus open plan workstations
- Custom built and integrated storage cupboards
- Flexible layout suitable for variety of businesses
- Easy access to kitchen and bathroom amenities
- Leased for \$6,833.33 per month until Mar 2021
- Imperial building with imposing street presence
- Exquisite Art Deco Palazzo style built circa 1930
- Striking main lobby area with high spec finishes
- Quality services including 3 newly renovated lifts
- Excellent location near Wynyard and Barangaroo

**Building Size** : 109 sqm  
**View** : <https://www.noonanproperty.com.au/sale/nsw/sydney-city/sydney/commercial/offices/6044216>

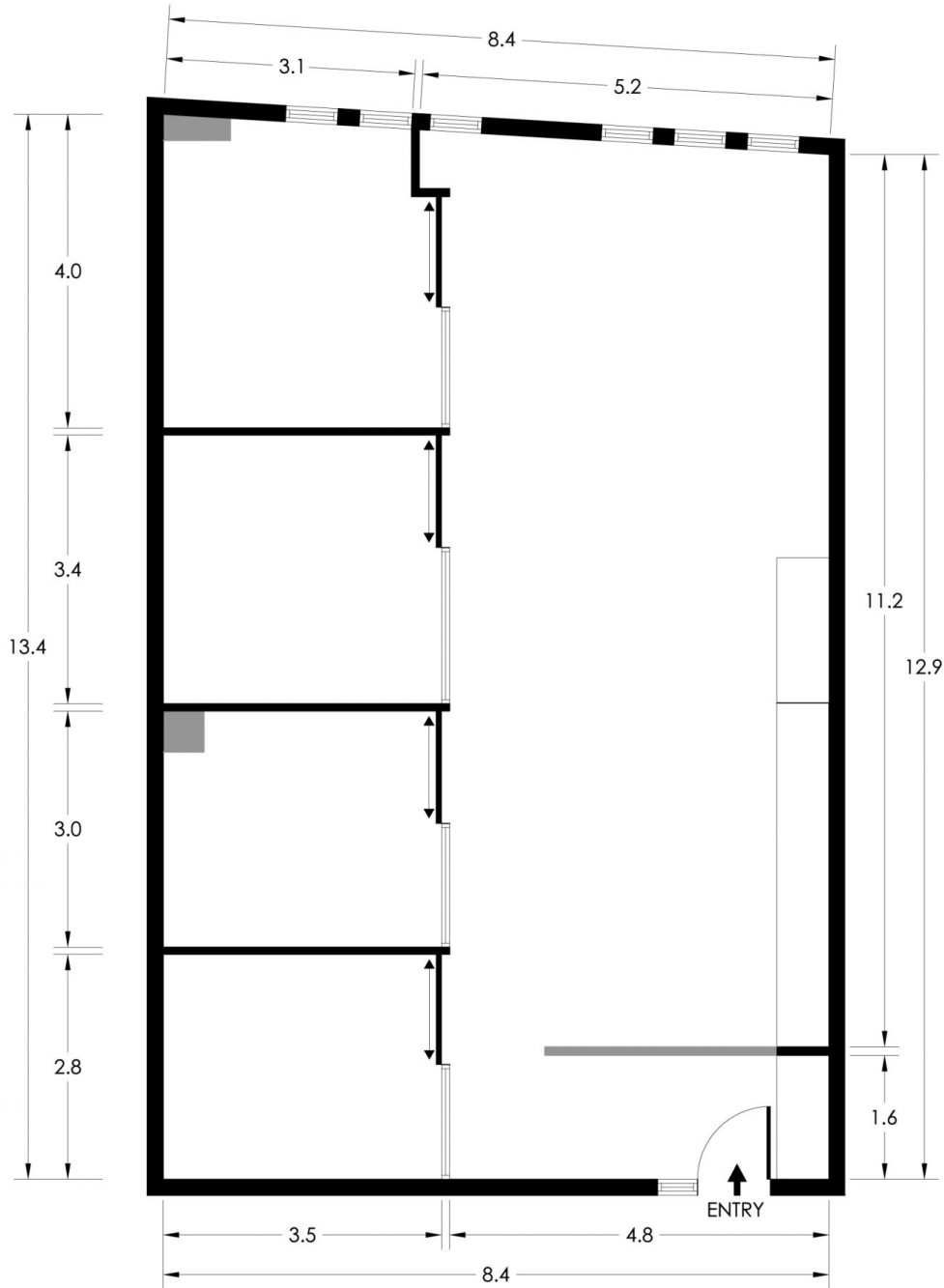


**Tim Noonan**  
02 9231 6000



**Ben Kennedy**  
0449 286 129

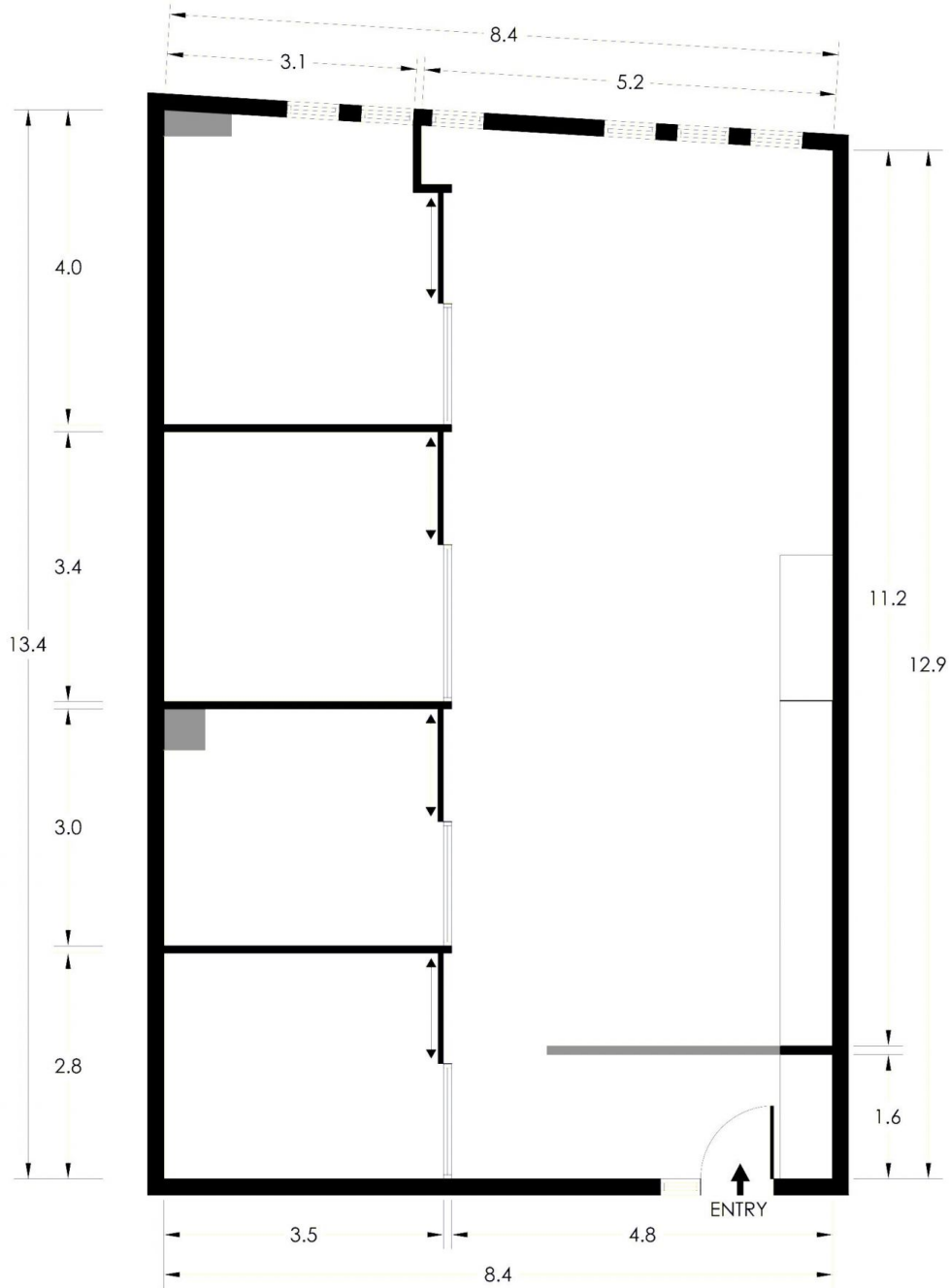
# SUITE 902 65 YORK STREET SYDNEY



\*PLANS SHOWN ONLY INDICATIVE OF LAYOUT. DIMENSIONS ARE APPROXIMATE.  
Floor plan supplied by V-Mark Design Pty Ltd. This floor plan is provided for indicative purposes only.  
Measurements are approximate and not to scale. The vendor, agency and supplier will accept no liability  
for its accuracy. Interested parties are advised to make their own independent enquiries.

## NOONAN PROPERTY

# SUITE 902 65 YORK STREET SYDNEY



\*PLANS SHOWN ONLY INDICATIVE OF LAYOUT. DIMENSIONS ARE APPROXIMATE.  
Floor plan supplied by V-Mark Design Pty Ltd. This floor plan is provided for indicative purposes only.  
Measurements are approximate and not to scale. The vendor, agency and supplier will accept no liability  
for its accuracy. Interested parties are advised to make their own independent enquiries.

## NOONAN PROPERTY