



## 1005/50 Clarence Street Sydney NSW

- Modern and impressive commercial suite
- Stylish, professional and efficient workspace
- Large windows and excellent natural light
- Quality fitout included with modern finishes
- Separate meeting room or executive office
- Onsite shower and change room facilities
- Modern and prominent commercial building
- Impressive main lobby area with three lifts
- Surrounded by popular restaurants and bars
- Prime location adjacent to Wynyard Station
- Minutes to Martin Place and Barangaroo

50 Clarence Street is a high quality commercial building in a superb location near Wynyard Station. This high profile position is a leading business address and a significant growth precinct due to its close proximity to the new and exciting Barangaroo and Wynyard Walk developments.

**Building Size** : 69 sqm  
**View** : <https://www.noonanproperty.com.au/lease/nsw/sydney-city/sydney/commercial/offices/6410867>



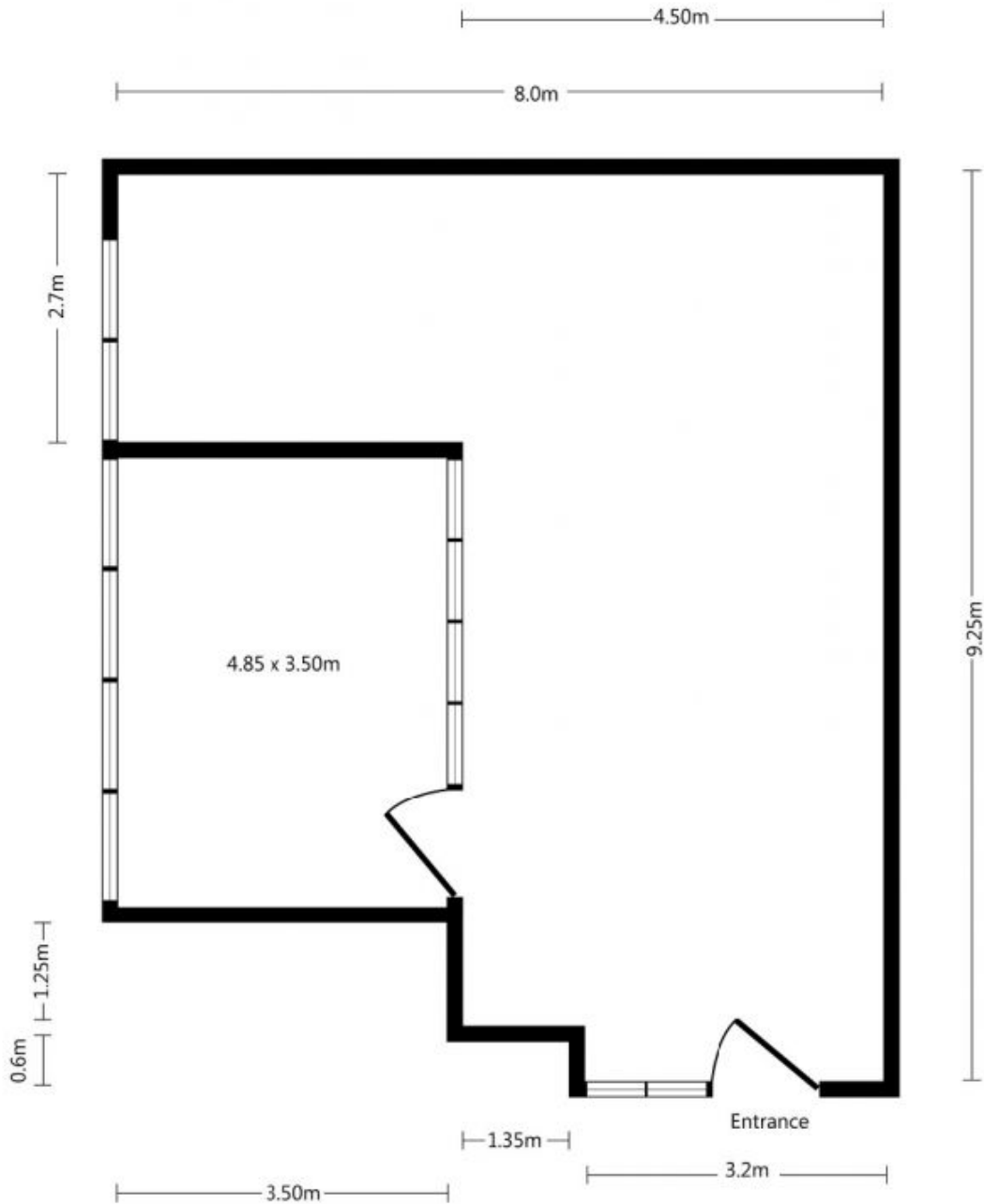
**Tim Noonan**  
02 9231 6000



**Ben Kennedy**  
0449 286 129

# SUITE 1005

## 50 CLARENCE STREET, SYDNEY

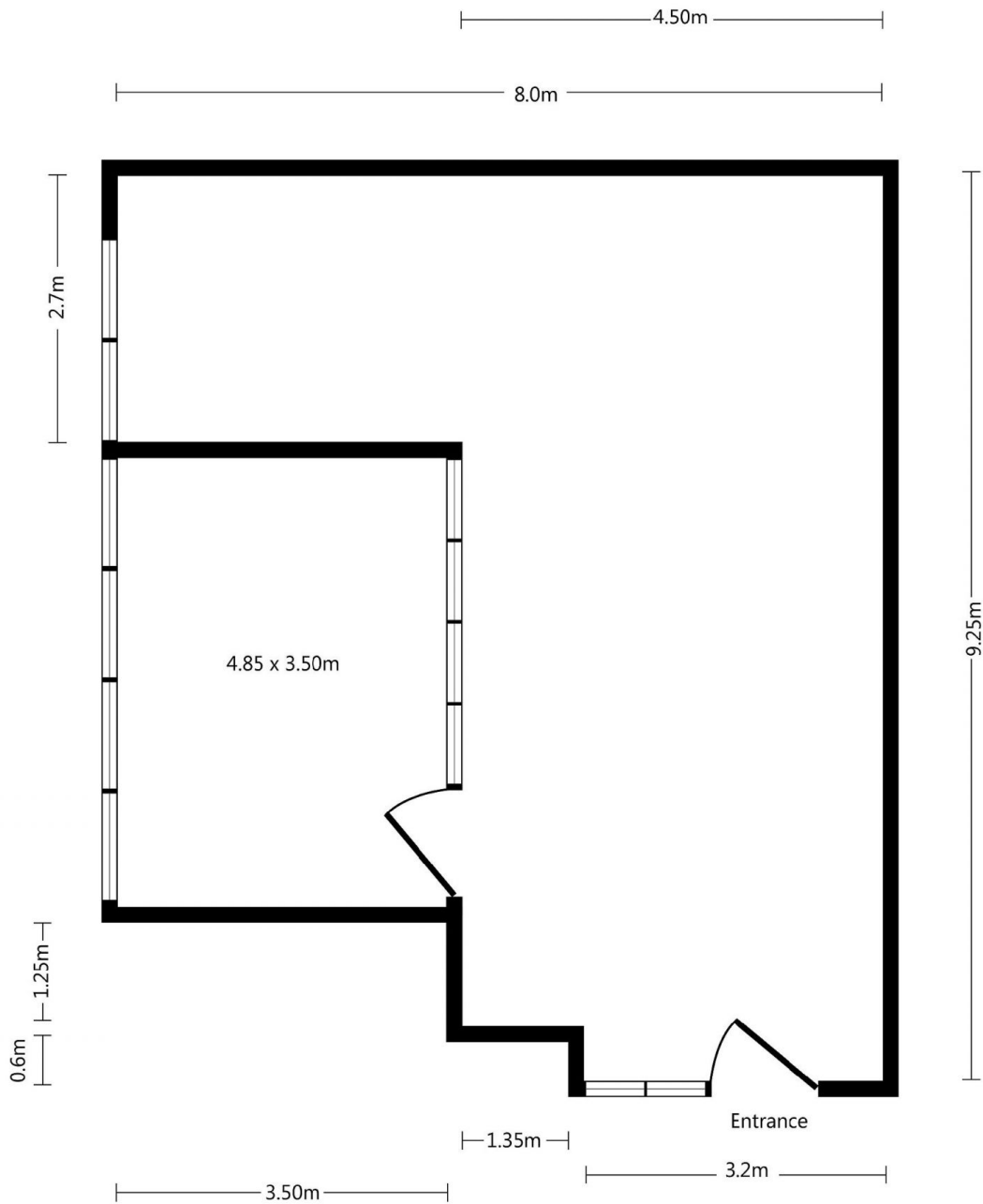


\*PLANS SHOWN ONLY INDICATIVE OF LAYOUT. DIMENSIONS ARE APPROXIMATE.  
Floor plan supplied by V-Mark Design Pty Ltd. This floor plan is provided for indicative purposes only.  
Measurements are approximate and not to scale. The vendor, agency and supplier will accept no liability  
for its accuracy. Interested parties are advised to make their own independent enquiries.

**NOONAN**  
**PROPERTY**

# SUITE 1005

## 50 CLARENCE STREET, SYDNEY



\*PLANS SHOWN ONLY INDICATIVE OF LAYOUT. DIMENSIONS ARE APPROXIMATE.  
Floor plan supplied by V-Mark Design Pty Ltd. This floor plan is provided for indicative purposes only.  
Measurements are approximate and not to scale. The vendor, agency and supplier will accept no liability  
for its accuracy. Interested parties are advised to make their own independent enquiries.

**NOONAN**  
**PROPERTY**