



1402/447 Kent Street Sydney NSW

- Modern and impressive commercial suite
- Stylish, professional and efficient workspace
- Corner positioning with great natural light
- Quality fitout included with glass partitioning
- Attractive views overlooking the CBD skyline
- Multiple meeting rooms or executive offices
- Onsite shower and change room facilities
- Modern and prominent commercial building
- Impressive main lobby area with four lifts
- Onsite building manager and parking facilities
- Minutes to Barangaroo and Darling Harbour
- Close to Town Hall, Hyde Park and Haymarket
- Surrounded by quality restaurants and cafes

Size - 91 sqm approx.

Rental - \$620 per sqm gross per annum plus GST

Building Size : 91 sqm

View : <https://www.noonanproperty.com.au/lease/nsw/sydney-city/sydney/commercial/offices/6505522>



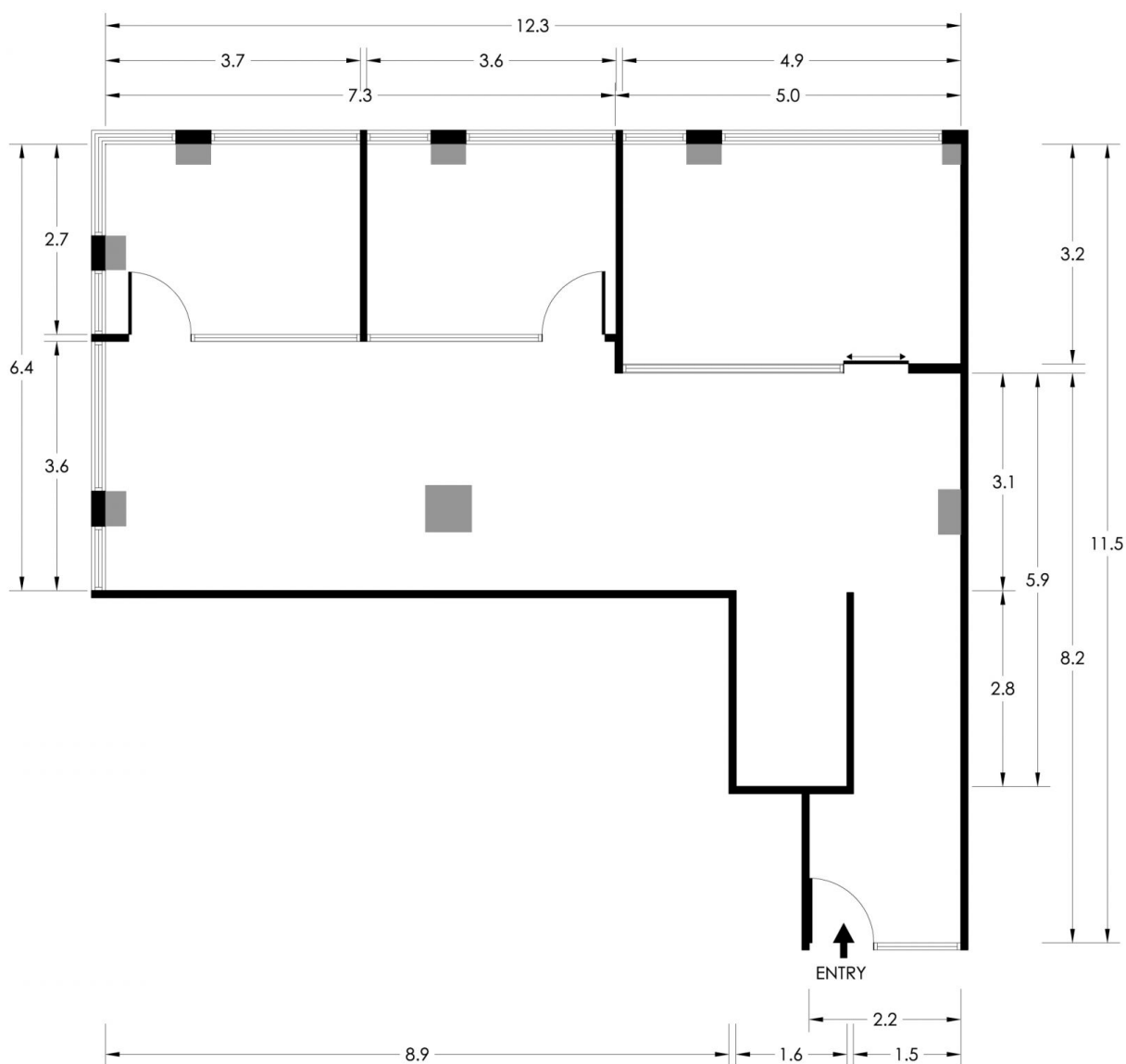
Ben Kennedy
0449 286 129



Tim Noonan
02 9231 6000

SUITE 1402

447 KENT STREET SYDNEY

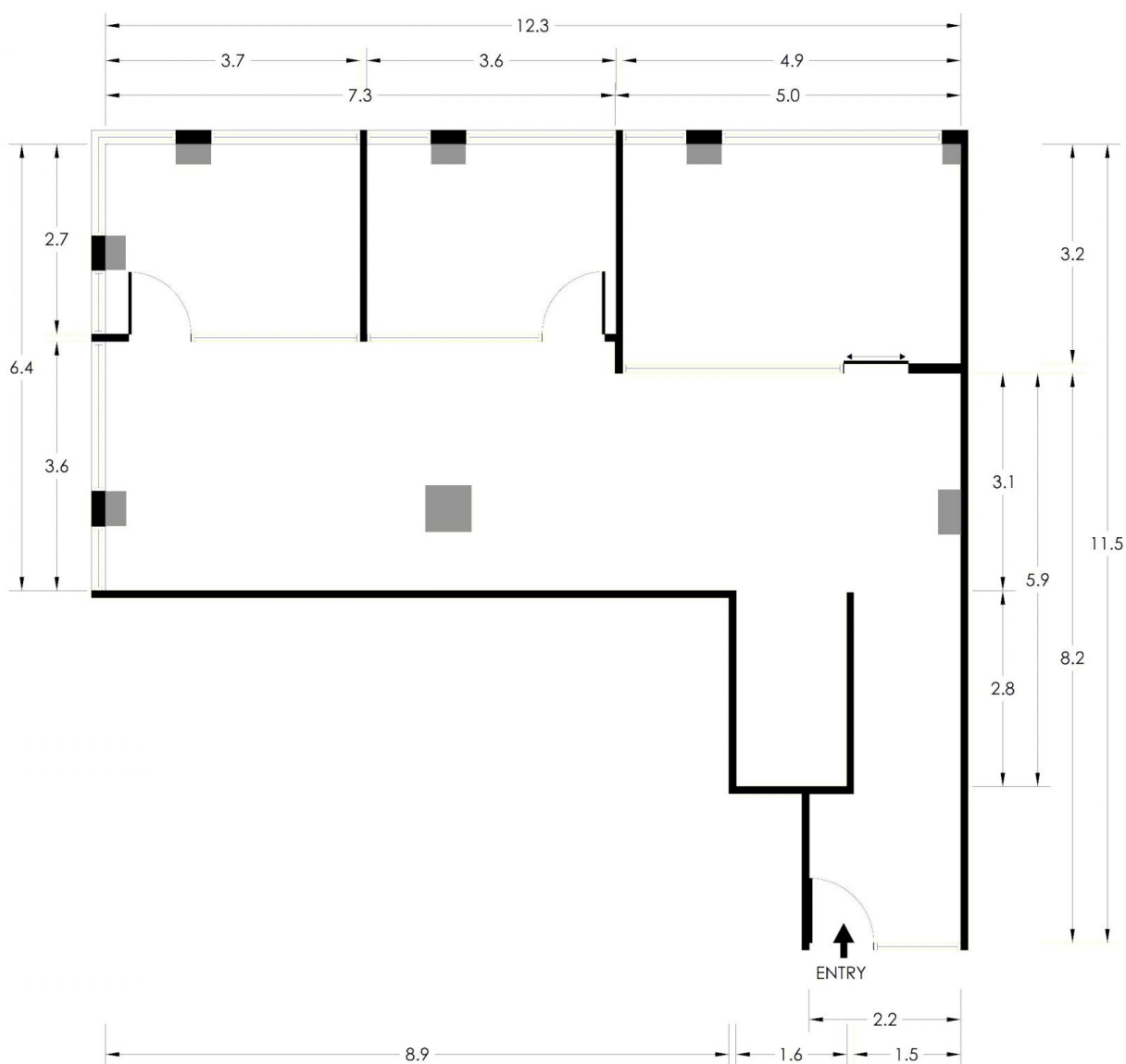


*PLANS SHOWN ONLY INDICATIVE OF LAYOUT. DIMENSIONS ARE APPROXIMATE.
Floor plan supplied by V-Mark Design Pty Ltd. This floor plan is provided for indicative purposes only.
Measurements are approximate and not to scale. The vendor, agency and supplier will accept no liability
for its accuracy. Interested parties are advised to make their own independent enquiries.

NOONAN
PROPERTY

SUITE 1402

447 KENT STREET SYDNEY



*PLANS SHOWN ONLY INDICATIVE OF LAYOUT. DIMENSIONS ARE APPROXIMATE.
Floor plan supplied by V-Mark Design Pty Ltd. This floor plan is provided for indicative purposes only.
Measurements are approximate and not to scale. The vendor, agency and supplier will accept no liability
for its accuracy. Interested parties are advised to make their own independent enquiries.

NOONAN PROPERTY